



Catalog: OM638950

Scan to get more validated information



# Jagged 1

Catalog: OM638950

☐ 100 µl

## Product profile

Product name	Jagged 1
Antibody Type	Primary Antibodies
Product description	The LIN-12/Notch family of transmembrane receptors is believed to play a central role in development by regulating cell fate decisions. Ligands for Notch include Jagged1, Jagged2 and Delta. Jagged is a membrane protein and can activate Notch and prevent myoblast differentiation by inhibiting the expression of muscle regulatory and structural genes. It is involved in mammalian cardiovascular development and in cell-fate decisions during hematopoiesis. Jagged is expressed in adult and fetal tissues, and expression is upregulated in cervical squamous cell carcinoma. Familial Tetralogy of Fallot, the most common form of complex congenital heart disease, is caused by a mutation in the Jagged1 gene.
Immunogen	Peptide

## Key Feature

Clonality	Polyclonal
Isotype	IgG
Host Species	Rabbit
Tested Applications	ICC ,IHC ,FC
Species Reactivity	Human Mouse Rat
Concentration	1 mg/mL

## Target Information

Alternative Names	AGS antibody AHD antibody AWS antibody CD 339 antibody CD339 antibody CD339 antigen antibody Headturner antibody hJ1 antibody Htu antibody Jag 1 antibody Jag1 antibody JAG1_HUMAN antibody Jagged 1 antibody Jagged1 (Alagille syndrome) antibody Jagged1 antibody JAGL1 antibody MGC104644 antibody OTTHUMP00000030278 antibody Protein jagged-1 antibody Ser 1 antibody Ser1 antibody Serrate 1 antibody Slalom antibody
Molecular Weight(MW)	133 kDa

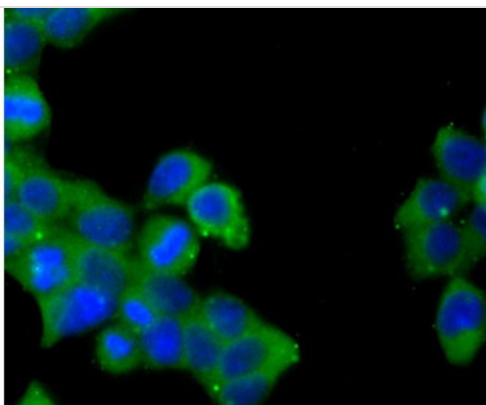
## Database Links

---

SwissProt ID	P78504
	Q9QXX0
	Q63722

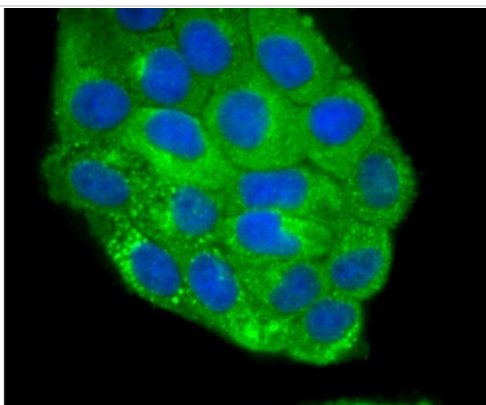
## Application

---



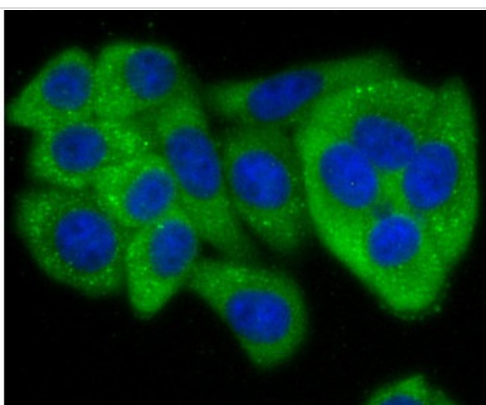
### Application

Fig1: ICC staining Jagged 1 in 293T cells (green). The nuclear counter stain is DAPI (blue). Cells were fixed in paraformaldehyde, permeabilised with 0.25% Triton X100/PBS.



### Application

Fig2: ICC staining Jagged 1 in HeLa cells (green). The nuclear counter stain is DAPI (blue). Cells were fixed in paraformaldehyde, permeabilised with 0.25% Triton X100/PBS.

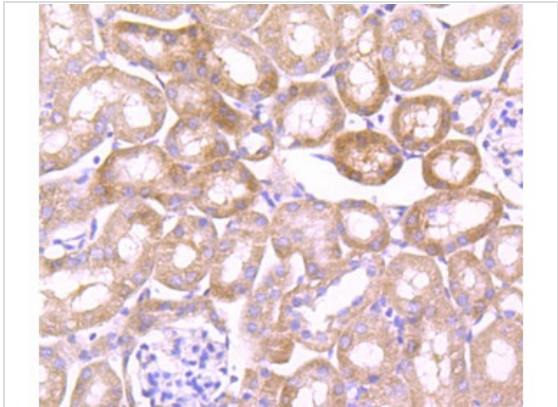
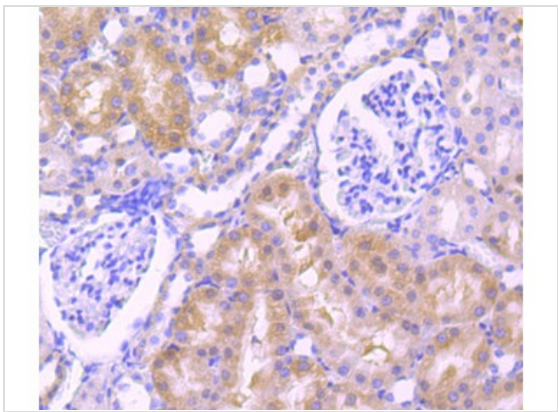


### Application

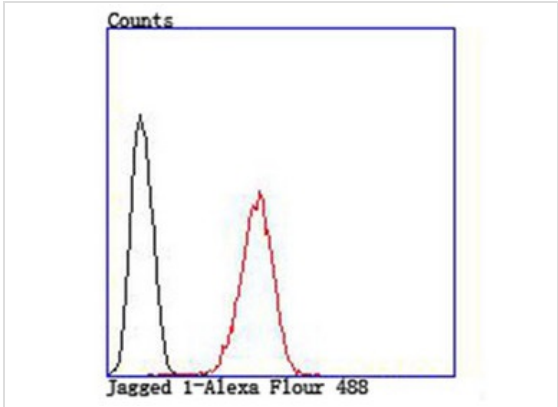
Fig3: ICC staining Jagged 1 in HepG2 cells (green). The nuclear counter stain is DAPI (blue). Cells were fixed in paraformaldehyde, permeabilised with 0.25% Triton X100/PBS.

### Application

Fig4: Immunohistochemical analysis of paraffin-embedded rat kidney tissue using anti-Jagged 1 antibody. Counter stained with hematoxylin.



**Application**  
 Fig5: Immunohistochemical analysis of paraffin-embedded mouse kidney tissue using anti-Jagged 1 antibody. Counter stained with hematoxylin.



**Application**  
 Fig6: Flow cytometric analysis of HepG2 cells with Jagged 1 antibody at 1/100 dilution (red) compared with an unlabelled control (cells without incubation with primary antibody; black).

<b>Positive Control</b>	293T, Hela, HepG2, rat kidney tissue, mouse kidney tissue.
<b>Application Notes</b>	<b>ICC:</b> 1:200~1:500 <b>IHC:</b> 1:50~1:200 <b>FC:</b> 1:200~1:500 <b>Notes:</b> Optimal dilutions/concentrations should be determined by the researcher.

### Additional Information

<b>Form</b>	Liquid
<b>Storage Instructions</b>	Store at +4°C after thawing. Aliquot store at -20°C or -80°C. Avoid repeated freeze / thaw cycles.
<b>Storage Buffer</b>	1*TBS (pH7.4), 0.5%BSA, 50%Glycerol. Preservative: 0.05% Sodium Azide.
<b>Note</b>	The product is for research use only,not for use in diagnostic or therapeutic procedures.

order@Omnimabs.com

506 N. GARFIELD AVE #210 ALHAMBRA, CA 91801

This product is for research use only and is not approved for use in humans or in clinical diagnosis. Primary Antibodies are guaranteed for 1 year from date of receipt

