



Catalog: OM282922

Scan to get more validated information



KLF11 Antibody

Catalog: OM282922

☐ 100ug

Product profile

Product name	KLF11 Antibody
Antibody Type	Primary Antibodies
Product description	KLF11 (TIEG2) is a pancreas-enriched transcription factor that has elicited significant attention because of its role as negative regulator of exocrine cell growth in vitro and in vivo. It plays a role in the regulation of pancreatic beta cell physiology, and its variants may contribute to the development of diabetes. ¹⁾ Neve, B., (2005) Proc. Natl. Acad. Sci. U.S.A. 102 (13), 4807-4812.
Immunogen	Antibody produced in rabbits immunized with a synthetic peptide corresponding a region of human KLF11

Key Feature

Clonality	Polyclonal
Host Species	Rabbit
Tested Applications	ELISA ,WB
Species Reactivity	Human
Concentration	1 mg/ml
Purification	Protein A

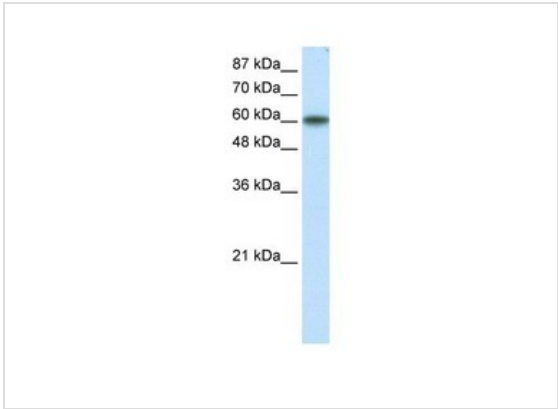
Target Information

Gene Symbol	KLF11
Alternative Names	KLF11, FKLF, FKLF1, MODY7, TIEG2, Tieg3
Molecular Weight(MW)	55 kDa, 76 kDa

Database Links

Entrez Gene	8462
Protein Accession	NP_003588

Application



Application
Antibody used in WB on Transfected 293T at 1.25 ug/ml.

Positive Control	1) Tranfected 293T Cell Lysate
Application Notes	KLF11 antibody can be used for detection of KLF11 by ELISA at 1:1562500. KLF11 antibody can be used for detection of KLF11 by western blot at 1.25 µg/mL, and HRP conjugated secondary antibody should be diluted 1:50,000 - 100,000.:

Additional Information

Form	Liquid
Storage Instructions	For short periods of storage (days) store at 4 °C. For longer periods of storage, store KLF11 antibody at -20 °C. As with any antibody avoid repeat freeze-thaw cycles.
Storage Buffer	IgG in phosphate buffered saline , pH 7.4, 150mM NaCl, 0.02% sodium azide and 50% glycerol.Store at -20 °C.Stable for 12 months from date of receipt
Note	The product is for research use only,not for use in diagnostic or therapeutic procedures.

OmnimAbs.com

order@Omnimabs.com
506 N. GARFIELD AVE #210 ALHAMBRA, CA 91801
This product is for research use only and is not approved for use in humans or in clinical diagnosis. Primary Antibodies are guaranteed for 1 year from date of receipt