



Catalog: OM282931

Scan to get more validated information



KLF16 Antibody

Catalog: OM282931

☐ 100ug

Product profile

Product name	KLF16 Antibody
Antibody Type	Primary Antibodies
Product description	KLF16 is a transcription factor that binds GC and GT boxes and displaces Sp1 and Sp3 from these sequences. KLF16 modulates dopaminergic transmission in the brain.1) Gerhard, D.S., PLoS Genet. 3 (5), E65 (2007).
Immunogen	Antibody produced in rabbits immunized with a synthetic peptide corresponding a region of human KLF16 .

Key Feature

Clonality	Polyclonal
Host Species	Rabbit
Tested Applications	ELISA ,WB
Species Reactivity	Human
Concentration	1 mg/ml
Purification	Affinity purified

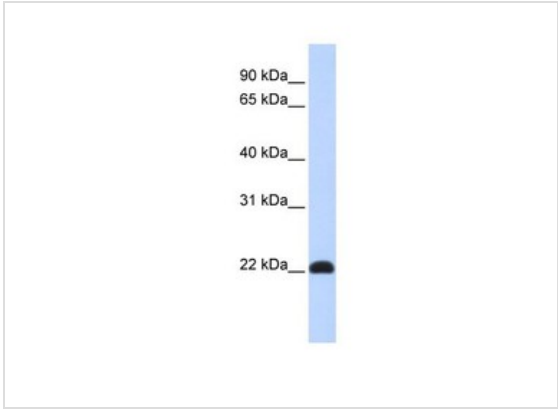
Target Information

Gene Symbol	KLF16
Alternative Names	KLF16, BTEB4, DRRF, NSLP2
Molecular Weight(MW)	25 kDa

Database Links

Entrez Gene	83855
Protein Accession	NP_114124

Application



Application
Antibody used in WB on Human Muscle at 0.2-1 ug/ml.

Positive Control	1) Cat. No. XBL-10413 - Fetal Skeletal Muscle Tissue Lysate
Application Notes	KLF16 antibody can be used for detection of KLF16 by ELISA at 1:62500. KLF16 antibody can be used for detection of KLF16 by western blot at 1 µg/mL, and HRP conjugated secondary antibody should be diluted 1:50,000 - 100,000.:

Additional Information

Form	Liquid
Storage Instructions	For short periods of storage (days) store at 4 °C. For longer periods of storage, store KLF16 antibody at -20 °C. As with any antibody avoid repeat freeze-thaw cycles.
Storage Buffer	Antibody is lyophilized in PBS buffer with 2% sucrose. Add 50 µL of distilled water. Final antibody concentration is 1 mg/mL.
Note	The product is for research use only, not for use in diagnostic or therapeutic procedures.

OmnimAbs.com

order@Omnimabs.com
506 N. GARFIELD AVE #210 ALHAMBRA, CA 91801
This product is for research use only and is not approved for use in humans or in clinical diagnosis. Primary Antibodies are guaranteed for 1 year from date of receipt