



Catalog: OM283176

Scan to get more validated information



L3MBTL2 Antibody

Catalog: OM283176

☐ 100ug

Product profile

Product name	L3MBTL2 Antibody
Antibody Type	Primary Antibodies
Product description	L3MBTL2 contains 1 FCS-type zinc finger and 4 MBT repeats. It is putative Polycomb group (PcG) protein . PcG proteins maintain the transcriptionally repressive state of genes, probably via a modification of chromatin, rendering it heritably changed in its expressibility. Its association with a chromatin remodeling complex suggests that it may contribute to prevent expression of genes that trigger the cell into mitosis.1) Collins, J.E., Genome Biol. 5 (10), R84 (2004).
Immunogen	Antibody produced in rabbits immunized with a synthetic peptide corresponding a region of human L3MBTL2.

Key Feature

Clonality	Polyclonal
Host Species	Rabbit
Tested Applications	ELISA ,WB
Species Reactivity	Human
Concentration	1 mg/ml
Purification	Protein A

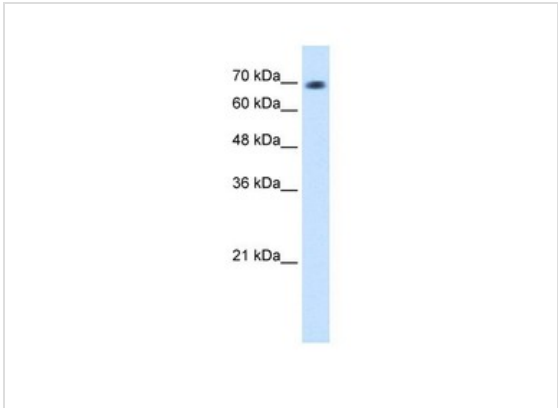
Target Information

Gene Symbol	L3MBTL2
Alternative Names	L3MBTL2, H-I(3)mbt-I, L3MBT
Molecular Weight(MW)	79 kDa

Database Links

Entrez Gene	83746
-------------	-------

Application



Application
Antibody used in WB on Transfected 293T at 1.25 ug/ml.

Positive Control	1) Tranfected 293T Cell Lysate
Application Notes	L3MBTL2 antibody can be used for detection of L3MBTL2 by ELISA at 1:62500. L3MBTL2 antibody can be used for detection of L3MBTL2 by western blot at 1.25 µg/mL, and HRP conjugated secondary antibody should be diluted 1:50,000 - 100,000.:

Additional Information

Form	Liquid
Storage Instructions	For short periods of storage (days) store at 4 °C. For longer periods of storage, store L3MBTL2 antibody at -20°C. As with any antibody avoid repeat freeze-thaw cycles.
Storage Buffer	IgG in phosphate buffered saline , pH 7.4, 150mM NaCl, 0.02% sodium azide and 50% glycerol.Store at -20 °C.Stable for 12 months from date of receipt
Note	The product is for research use only,not for use in diagnostic or therapeutic procedures.

OmnimAbs.com

order@Omnimabs.com
506 N. GARFIELD AVE #210 ALHAMBRA, CA 91801
This product is for research use only and is not approved for use in humans or in clinical diagnosis. Primary Antibodies are guaranteed for 1 year from date of receipt