



**Catalog: OM284740**

Scan to get more validated information



# MINA Antibody

Catalog: OM284740

☐ 100ug

## Product profile

<b>Product name</b>	MINA Antibody
<b>Antibody Type</b>	Primary Antibodies
<b>Product description</b>	MINA is a protein with a molecular weight of 53 kDa, which is localized in the nucleus and with part of the protein concentrated in the nucleolus. It is a direct target gene of Myc and is involved in mammalian cell proliferation.1) Zhang, Y., (2005) Oncogene 24 (31), 4873-4882.
<b>Immunogen</b>	Antibody produced in rabbits immunized with a synthetic peptide corresponding a region of human MINA.

## Key Feature

<b>Clonality</b>	Polyclonal
<b>Host Species</b>	Rabbit
<b>Tested Applications</b>	WB
<b>Species Reactivity</b>	Human
<b>Concentration</b>	1 mg/ml
<b>Purification</b>	Affinity purified

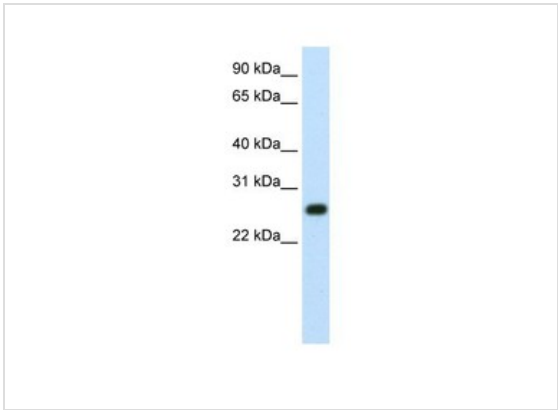
## Target Information

<b>Gene Symbol</b>	MINA
<b>Alternative Names</b>	MINA, ROX, MDIG, NO52, MINA53
<b>Molecular Weight(MW)</b>	32 kDa, 53 kDa, 53 kDa

## Database Links

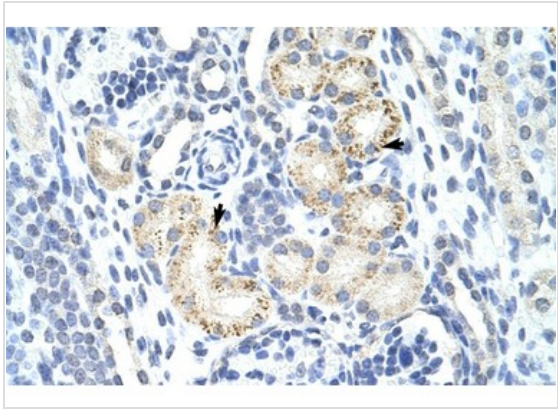
<b>Entrez Gene</b>	84864
<b>Protein Accession</b>	NP_694822

## Application



**Application**

Antibody used in WB on Human HepG2 at 1.25 ug/ml.



**Application**

Antibody used in IHC on Human kidney.

<b>Positive Control</b>	1) Cat. No. XBL-10426 - Fetal Thymus Tissue Lysate
<b>Application Notes</b>	<b>MINA antibody can be used for detection of MINA by ELISA at 1:62500. MINA antibody can be used for detection of MINA by western blot at 0.25 µg/mL, and HRP conjugated secondary antibodies should be diluted 1:50,000 - 100,000.</b>

## Additional Information

<b>Form</b>	Liquid
<b>Storage Instructions</b>	For short periods of storage (days) store at 4 °C. For longer periods of storage, store MINA antibody at -20 °C. As with any antibody avoid repeat freeze-thaw cycles.
<b>Storage Buffer</b>	Antibody is lyophilized in PBS buffer with 2% sucrose. Add 50 µL of distilled water. Final antibody concentration is 1 mg/mL.
<b>Note</b>	The product is for research use only, not for use in diagnostic or therapeutic procedures.

OmnimAbs.com