



Catalog: OM284741

Scan to get more validated information



MINA Antibody

Catalog: OM284741

☐ 100ug

Product profile

Product name	MINA Antibody
Antibody Type	Primary Antibodies
Product description	MINA Antibody: MINA is nuclear localized, myc-inducible protein that is thought to play a role in mammalian cell proliferation. Treatment of cancer cells lines such as the colon cancer cell line SW680 with siRNA against MINA inhibits cell growth, demonstrating that MINA may be a potential therapeutic target. MINA regulates several genes related to cell adhesion and metabolism that have also been shown to be regulated by c-Myc, but also regulates other genes whose expression are not modulated by c-Myc such as EGFR, IL-6 and HGF. MINA has also been found to act as a repressor to IL-4 expression in T cells, indicating that it may also play a role in T cell differentiation and genetic variation in T helper type 2 bias.1) Tsuneoka M, Kody Y, Soejima M, et al. A novel myc target gene, mina53, that is involved in cell proliferation. J. Biol. Chem. 2002; 277:35450-9.
Immunogen	MINA antibody was raised against a 15 amino acid synthetic peptide near the amino terminus of human MINA. The immunogen is located within amino acids 380 - 430 of MINA.

Key Feature

Clonality	Polyclonal
Isotype	IgG
Host Species	Rabbit
Tested Applications	ELISA ,IF ,IHC-P ,WB
Species Reactivity	Human Mouse
Concentration	1 mg/ml
Purification	Affinity purified

Target Information

Gene Symbol	MINA
Alternative Names	MINA Antibody: ROX, MDIG, NO52, MINA53, Bifunctional lysine-specific demethylase and histidyl-hydroxylase MINA, 60S ribosomal protein L27a histidine hydrolase, ROX

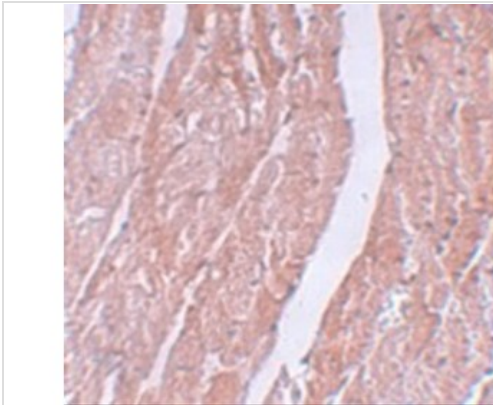
ase MINA, 600 mitochondrial protein 27 and histidine hydroxylase, NCX

Sequence Similarities Predicted species reactivity based on immunogen sequence: Bovine: (80%)

Database Links

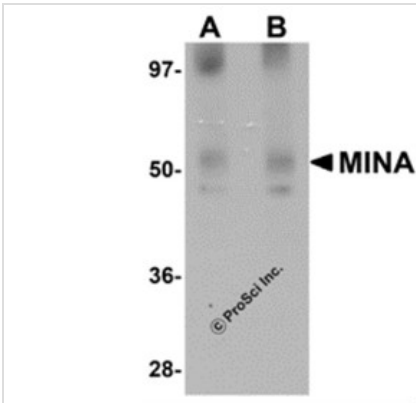
Entrez Gene	84864
Protein Accession	NP_694822

Application



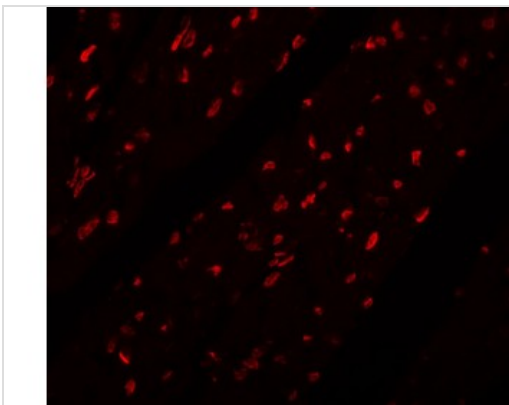
Application

Immunohistochemistry of MINA in mouse heart tissue with MINA antibody at 5 µg/mL.



Application

Western blot analysis of MINA in human heart tissue lysate with MINA antibody at (A) 1 and (B) 2 µg/mL.



Application

Immunofluorescence of MINA in mouse heart tissue with MINA antibody at 20 µg/mL.

Positive Control 1) Cat. No. 1301 - Human Heart Tissue Lysate

Application Notes MINA antibody can be used for detection of MINA by Western blot at 1 - 2 µg/mL. Antibody can also be used for immunohistochemistry starting at 5 µg/mL. For immunofluorescence start at 20 µg/mL.

Additional Information

Form	Liquid
Storage Instructions	MINA antibody can be stored at 4°C for three months and -20°C, stable for up to one year. As with all anti bodies care should be taken to avoid repeated freeze thaw cycles. Antibodies should not be exposed to prolonged high temperatures.
Storage Buffer	MINA Antibody is supplied in PBS containing 0.02% sodium azide.
Note	The product is for research use only,not for use in diagnostic or therapeutic procedures.

OmnimAbs.com

order@Omnimabs.com
506 N. GARFIELD AVE #210 ALHAMBRA, CA 91801
This product is for research use only and is not approved for use in humans or in clinical diagnosis. Primary Antibodies are guaranteed for 1 year from date of receipt