



Catalog: OM284742

Scan to get more validated information



# MINA Antibody

Catalog: OM284742

☐ 100ug

## Product profile

Product name	MINA Antibody
Antibody Type	Primary Antibodies
Product description	MINA protein is directly involved in ribosome biogenesis, most likely during the assembly process of preribosomal particles. MINA is also involved in cell proliferation. MINA may have a role in esophageal squamous cell carcinoma, colon cancer and lung cancer <sup>1</sup> ) Zhang, Y., (2005) Oncogene 24 (31), 4873-4882.
Immunogen	Antibody produced in rabbits immunized with a synthetic peptide corresponding a region of human MINA.

## Key Feature

Clonality	Polyclonal
Host Species	Rabbit
Tested Applications	ELISA ,WB
Species Reactivity	Human
Concentration	1 mg/ml
Purification	Protein A

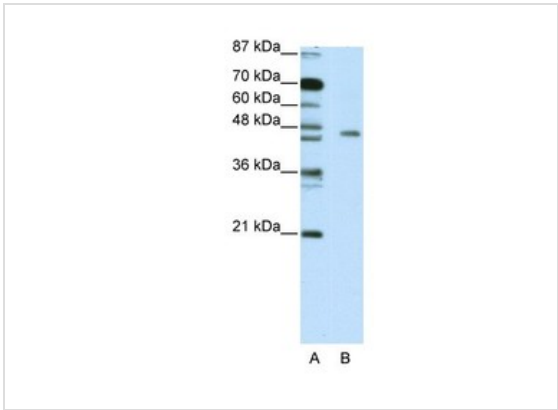
## Target Information

Gene Symbol	MINA
Alternative Names	MINA, ROX, MDIG, NO52, MINA53
Molecular Weight(MW)	53 kDa, 53 kDa, 53 kDa

## Database Links

Entrez Gene	84864
Protein Accession	NP_116167

## Application



**Application**  
Antibody used in WB on Human Jurkat 5.0 ug/ml.

Positive Control	1) Cat. No. 1205 - Jurkat Cell Lysate
Application Notes	<b>MINA antibody can be used for detection of MINA by ELISA at 1:12500. MINA antibody can be used for detection of MINA by western blot at 5 µg/mL, and HRP conjugated secondary antibody should be diluted 1:50,000 - 100,000.:</b>

## Additional Information

Form	Liquid
Storage Instructions	For short periods of storage (days) store at 4°C. For longer periods of storage, store MINA antibody at -20°C. As with any antibody avoid repeat freeze-thaw cycles.
Storage Buffer	IgG in phosphate buffered saline , pH 7.4, 150mM NaCl, 0.02% sodium azide and 50% glycerol.Store at -20 °C.Stable for 12 months from date of receipt
Note	The product is for research use only,not for use in diagnostic or therapeutic procedures.

OmnimAbs.com

order@Omnimabs.com  
506 N. GARFIELD AVE #210 ALHAMBRA, CA 91801  
This product is for research use only and is not approved for use in humans or in clinical diagnosis. Primary Antibodies are guaranteed for 1 year from date of receipt