



Catalog: OM284779

Scan to get more validated information



MIXL1 Antibody

Catalog: OM284779

☐ 100ug

Product profile

Product name	MIXL1 Antibody
Antibody Type	Primary Antibodies
Product description	MIXL1 is a novel human Mix-like homeobox gene. In normal hematopoiesis, its expression appears to be restricted to immature B- and T-lymphoid cells. ¹) Hart, A.H., et al., (2005) Biochem. Biophys. Res. Commun. 333 (4), 1361-1369.
Immunogen	Antibody produced in rabbits immunized with a synthetic peptide corresponding a region of human MIXL1

Key Feature

Clonality	Polyclonal
Host Species	Rabbit
Tested Applications	ELISA ,WB
Species Reactivity	Human
Concentration	1 mg/ml
Purification	Affinity purified

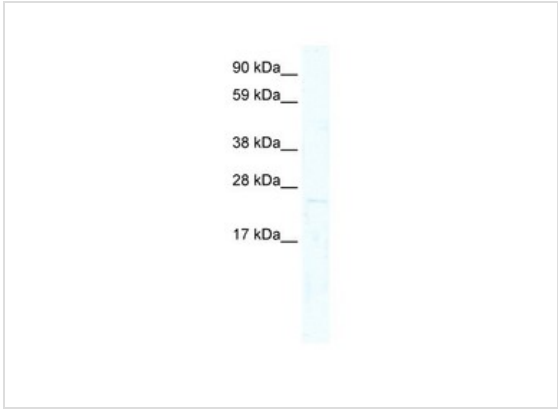
Target Information

Gene Symbol	MIXL1
Alternative Names	MIXL1, MIX, MIXL, MILD1
Molecular Weight(MW)	25 kDa

Database Links

Entrez Gene	83881
Protein Accession	NP_114150

Application



Application
Antibody used in WB on Human Heart at 0.2-1 ug/ml.

Positive Control	1) Cat. No. XBL-10407 - Fetal Heart Tissue Lysate
Application Notes	MIXL1 antibody can be used for detection of MIXL1 by ELISA at 1:312500. MIXL1 antibody can be used for detection of MIXL1 by western blot at 2 µg/mL, and HRP conjugated secondary antibody should be diluted 1:50,000 - 100,000.:

Additional Information

Form	Liquid
Storage Instructions	For short periods of storage (days) store at 4 °C. For longer periods of storage, store MIXL1 antibody at -20 °C. As with any antibody avoid repeat freeze-thaw cycles.
Storage Buffer	Antibody is lyophilized in PBS buffer with 2% sucrose. Add 50 µL of distilled water. Final antibody concentration is 1 mg/mL.
Note	The product is for research use only, not for use in diagnostic or therapeutic procedures.

OmnimAbs.com

order@Omnimabs.com
506 N. GARFIELD AVE #210 ALHAMBRA, CA 91801
This product is for research use only and is not approved for use in humans or in clinical diagnosis. Primary Antibodies are guaranteed for 1 year from date of receipt