



Catalog: OM284780

Scan to get more validated information



# MIXL1 Antibody

Catalog: OM284780

☐ 100ug

## Product profile

Product name	MIXL1 Antibody
Antibody Type	Primary Antibodies
Product description	Homeodomain proteins, such as MIXL1, are transcription factors that regulate cell fate during development (Hart et al., 2005 [PubMed 15982639]).1) Davis, R.P., et al. Blood 111(4):1876-1884(2008)
Immunogen	This MIXL1 antibody is generated from rabbits immunized with a KLH conjugated synthetic peptide between 122-151 amino acids from the Central region of human MIXL1.

## Key Feature

Clonality	Polyclonal
Isotype	Ig
Host Species	Rabbit
Tested Applications	WB
Species Reactivity	Mouse
Concentration	1 mg/ml
Purification	Affinity purified

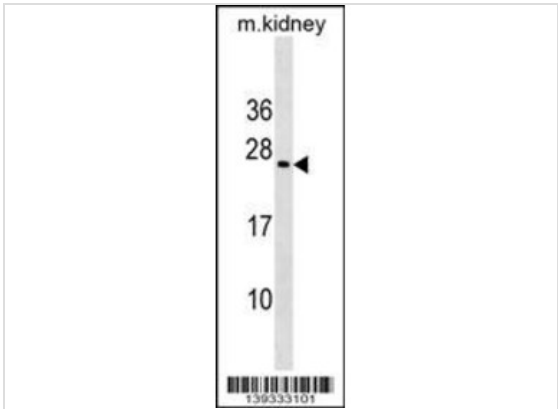
## Target Information

Gene Symbol	MIXL1
Alternative Names	Homeobox protein MIXL1, Homeodomain protein MIX, hMix, MIX1 homeobox-like protein 1, Mix1 homeobox-like protein, MIXL1, MIXL
Molecular Weight(MW)	25 kDa

## Database Links

Entrez Gene	83881
-------------	-------

Application



**Application**  
Western blot analysis in mouse kidney tissue lysates (35ug/lane).

**Application Notes** For WB starting dilution is: 1:1000:

Additional Information

Form	Liquid
Storage Instructions	Store at 4°C for three months and -20°C, stable for up to one year. As with all antibodies care should be taken to avoid repeated freeze thaw cycles. Antibodies should not be exposed to prolonged high temperatures.
Storage Buffer	Supplied in PBS with 0.09% (W/V) sodium azide.
Note	The product is for research use only,not for use in diagnostic or therapeutic procedures.

OmnimAbs.com

order@Omnimabs.com  
506 N. GARFIELD AVE #210 ALHAMBRA, CA 91801  
This product is for research use only and is not approved for use in humans or in clinical diagnosis. Primary Antibodies are guaranteed for 1 year from date of receipt

