



Catalog: OM638985

Scan to get more validated information



MLH1

Catalog: OM638985

☐ 100 µl

Product profile

Product name	MLH1
Antibody Type	Primary Antibodies
Product description	<p>MLH1 is a DNA mismatch repair protein that heterodimerizes with PMS2 to form MutL alpha, a component of the post-replicative DNA mismatch repair system (MMR). DNA repair is initiated by MutS alpha (MSH2-MSH6) or MutS beta (MSH2-MSH6) binding to a dsDNA mismatch, and then MutL alpha is recruited to the heteroduplex. Assembly of the MutL-MutS-heteroduplex ternary complex in the presence of RFC and PCNA is sufficient to activate endonuclease activity of PMS2. It introduces single-strand breaks near the mismatch and thus generates new entry points for the exonuclease EXO1 to degrade the mismatch strand. MutL alpha (MLH1-PMS2) interacts physically with the clamp loader subunits of DNA polymerase III, suggesting that it may recruit DNA polymerase III to the site of the MMR. Defects in MLH1 are the cause of hereditary nonpolyposis colorectal cancer type 2 (HNPCC2). Most patients with HNPCC have mutations in either the MLH1 or MSH2 genes (1).</p>
Immunogen	peptide

Key Feature

Clonality	Polyclonal
Isotype	IgG
Host Species	Rabbit
Tested Applications	WB ,ICC ,IHC ,FC ,IP
Species Reactivity	Human Mouse Rat
Concentration	1 mg/mL.

Target Information

Alternative Names	COCA 2 antibody COCA2 antibody DNA mismatch repair protein Mlh1 antibody FCC 2 antibody FCC2 antibody hMLH 1 antibody hMLH1 antibody HNPCC 2 antibody HNPCC antibody HNPCC2 antibody MGC517 2 antibody MLH 1 antibody MLH1 antibody MLH1_HUMAN antibody MutL homolog 1 (E. coli) antibody MutL homolog 1 antibody MutL homolog 1 colon cancer nonpolyposis type 2 antibody MutL homolog 1, col
-------------------	--

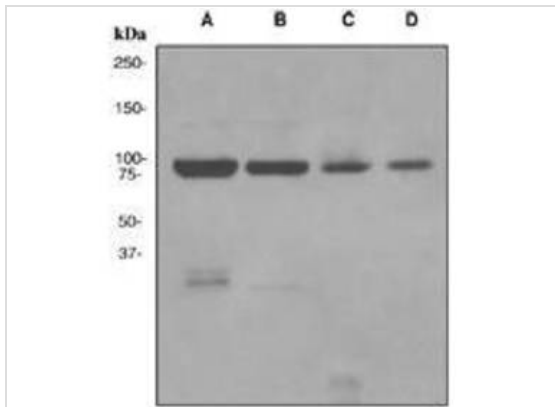
on cancer, nonpolyposis type 2 (E. coli) antibody MutL protein homolog 1 antibody MutL, E. coli, homolog of, 1 antibody

Molecular Weight(MW)	85 kDa
Cellular Localization	Nucleus

Database Links

SwissProt ID	P40692
---------------------	--------

Application



Application

Fig1: Western blot analysis on (A) 293, (B) HeLa, (C) A431, and (D) SW480 cell lysates using anti-MLH1.

Positive Control	Hela, 293, A431, SW480.
Application Notes	WB: 1:1,000 IP: 1:10-100 FC: 1:10-100

Additional Information

Form	Liquid
Storage Instructions	Store at -20 °C. Stable for 12 months from date of receipt
Storage Buffer	1*TBS (pH7.4), 0.5%BSA, 40%Glycerol. Preservative: 0.05% Sodium Azide.
Note	The product is for research use only,not for use in diagnostic or therapeutic procedures.

OmnimAbs.com

order@Omnimabs.com

506 N. GARFIELD AVE #210 ALHAMBRA, CA 91801

This product is for research use only and is not approved for use in humans or in clinical diagnosis. Primary Antibodies are guaranteed for 1 year from date of receipt