



Catalog: OM638960

Scan to get more validated information



MRP8/S100A8

Catalog: OM638960

☐ 100 µl

Product profile

Product name	MRP8/S100A8
Antibody Type	Primary Antibodies
Product description	The family of EF-hand type Ca ²⁺ -binding proteins includes Calbindin (previously designated vitamin D-dependent Ca ²⁺ -binding protein), S-100 α and β, Cal-granulins A (also designated MRP8), B (also designated MRP14) and C (S-100 like proteins) and the parvalbumin family members, including parvalbumin α and parvalbumin β (also designated oncomodulin). Calbindin, S-100 proteins and parvalbumin proteins are each expressed in neural tissues. In addition, S-100 α and β are present in a variety of other tissues and Calbindin is present in intestine and kidney. Parvalbumin α is also found in fast-contracting/relaxing skeletal muscle fibers and parvalbumin β is found in many tumor tissues as well as in the organ of Corti. Calbindin, S-100 proteins and parvalbumins have all been detected in Leydig cells and the testis. These proteins are thought to play a role in hormone production and spermatogenesis. Calgranulin is expressed in macrophages and epithelial cells.
Immunogen	Recombinant protein

Key Feature

Clonality	Polyclonal
Isotype	IgG
Host Species	Rabbit
Tested Applications	WB ,ICC ,IHC ,FC
Species Reactivity	Human Mouse Rat
Concentration	1 mg/mL.

Target Information

Alternative Names	60B8Ag antibody AI323541 antibody B8Ag antibody BEE11 antibody CAGA antibody Calgranulin-A antibody Calprotectin L1L subunit antibody Calprotectin, included antibody CFAG antibody CGLA antibody Chemotactic cytokine CP-10 antibody CP-10 antibody Cystic fibrosis antigen antibody L1Ag antibody Leukocyte L1 complex light chain antibody MA387 antibody MIF antibody Migration inhibitory factor-related pro
-------------------	---

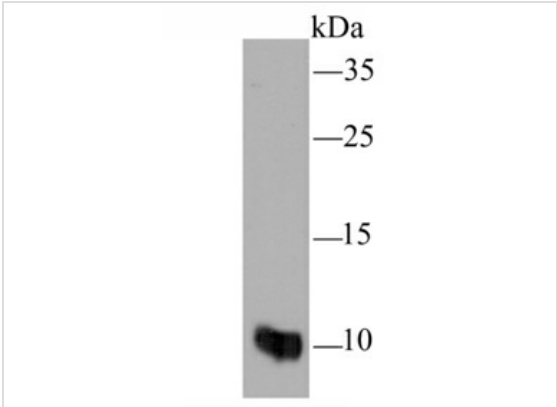
tein 8 antibody MRP-8 antibody Myeloid-related protein 8 antibody Neutrophil cytosolic 7 kDa protein anti
body NIF antibody p8 antibody Pro-inflammatory S100 cytokine antibody Protein S100-A8 antibody S100
calcium binding protein A8 (calgranulin A) antibody S100 calcium binding protein A8 antibody S100 calciu
m-binding protein A8 antibody S100A8 antibody S100A8/S100A9 complex, included antibody S10A8_HU
MAN antibody Urinary stone protein band A antibody

Molecular Weight(MW)	11 kDa
Cellular Localization	Cell membrane. Cytoplasm. Secreted.

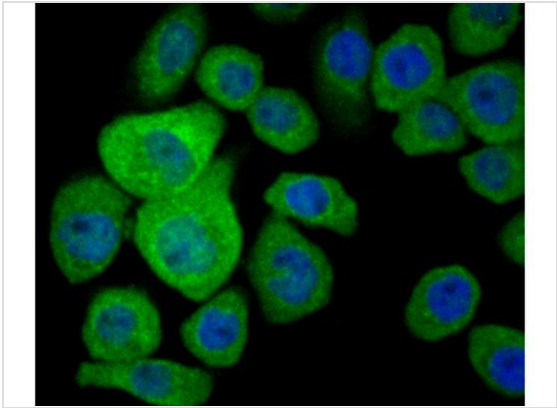
Database Links

SwissProt ID	P05109
	P27005

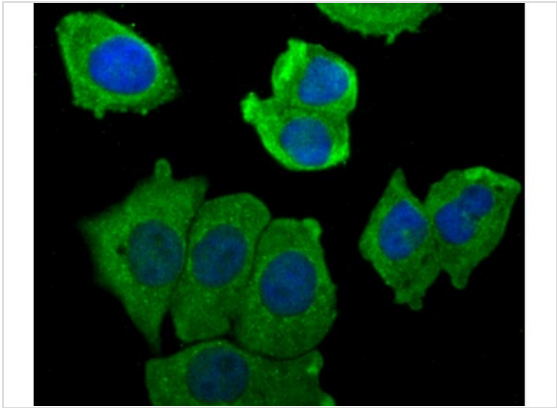
Application



Application
Fig1: Western blot analysis of MRP8/S100A8 on HL-60 cell lysate using anti-MRP8/S100A8 antibody at 1/100 dilution.

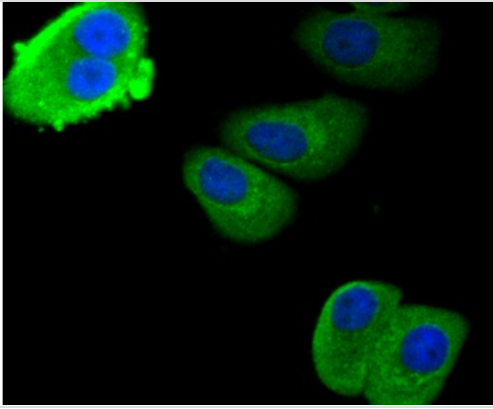


Application
Fig2: ICC staining MRP8/S100A8 in AGS cells (green). The nuclear counter stain is DAPI (blue). Cells were fixed in paraformaldehyde, permeabilised with 0.25% Triton X100/PBS.

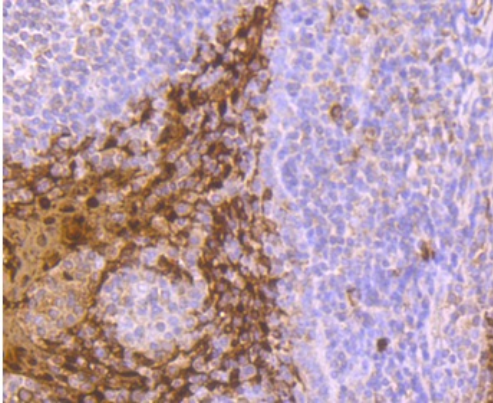


Application
Fig3: ICC staining MRP8/S100A8 in MCF-7 cells (green). The nuclear counter stain is DAPI (blue). Cells were fixed in paraformaldehyde, permeabilised with 0.25% Triton X100/PBS.

Application
Fig4: ICC staining MRP8/S100A8 in SK-Br-3 cells (green). The nuclear counter stain is DAPI (blue). Cells were fixed in paraformaldehyde, permeabilised with 0.25%

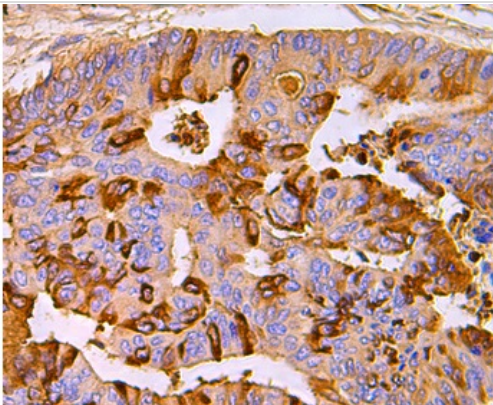


Triton X100/PBS.



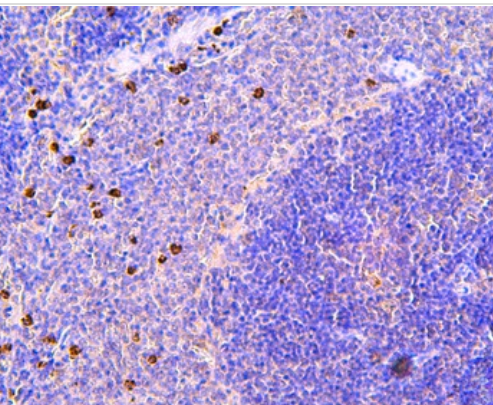
Application

Fig5: Immunohistochemical analysis of paraffin-embedded human tonsil tissue using anti-MRP8/S100A8 antibody. Counter stained with hematoxylin.



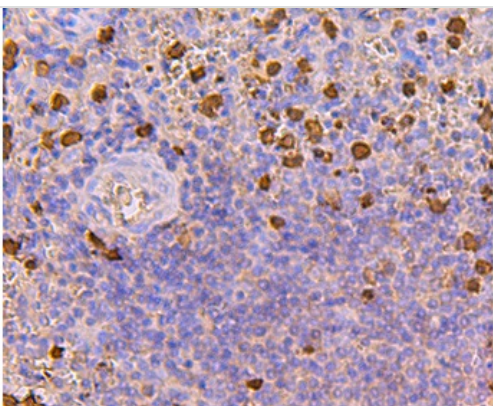
Application

Fig6: Immunohistochemical analysis of paraffin-embedded human colon cancer tissue using anti-MRP8/S100A8 antibody. Counter stained with hematoxylin.



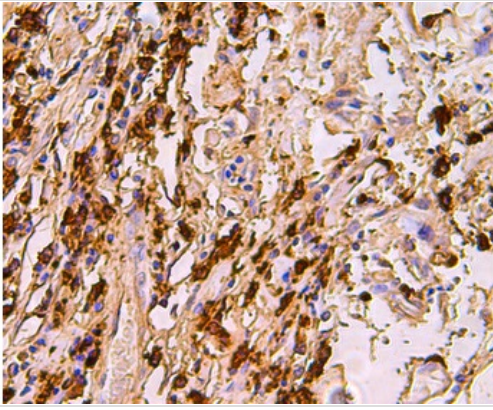
Application

Fig7: Immunohistochemical analysis of paraffin-embedded rat spleen tissue using anti-MRP8/S100A8 antibody. Counter stained with hematoxylin.



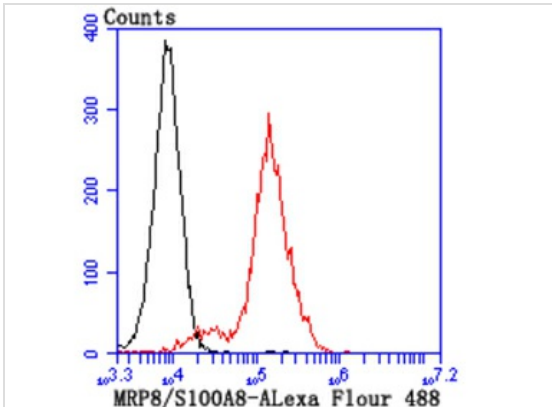
Application

Fig8: Immunohistochemical analysis of paraffin-embedded human spleen tissue using anti-MRP8/S100A8 antibody. Counter stained with hematoxylin.



Application

Fig9: Immunohistochemical analysis of paraffin-embedded human breast cancer tissue using anti-MRP8/S100A8 antibody. Counter stained with hematoxylin.



Application

Fig10: Flow cytometric analysis of THP-1 cells with MRP8/S100A8 antibody at 1/100 dilution (red) compared with an unlabelled control (cells without incubation with primary antibody; black).

Positive Control	HL-60, AGS, MCF-7, SK-Br-3, human tonsil tissue, human colon cancer tissue, human spleen tissue, human breast cancer tissue, rat spleen tissue, THP-1.
Application Notes	WB: 1:500 ICC: 1:50-1:200 IHC: 1:50-1:200 FC: 1:50-1:100

Additional Information

Form	Liquid
Storage Instructions	Store at +4°C after thawing. Aliquot store at -20°C or -80°C. Avoid repeated freeze / thaw cycles.
Storage Buffer	1*TBS (pH7.4), 0.5%BSA, 50%Glycerol. Preservative: 0.05% Sodium Azide.
Note	The product is for research use only,not for use in diagnostic or therapeutic procedures.

OmnimAbs.com

order@Omnimabs.com

506 N. GARFIELD AVE #210 ALHAMBRA, CA 91801

This product is for research use only and is not approved for use in humans or in clinical diagnosis. Primary Antibodies are guaranteed for 1 year from date of receipt