



Catalog: OM285612

Scan to get more validated information



MYC Antibody

Catalog: OM285612

☐ 100ug

Product profile

Product name	MYC Antibody
Antibody Type	Tags Antibodies
Product description	MYC is a multifunctional, nuclear phosphoprotein that plays a role in cell cycle progression, apoptosis and cellular transformation. It functions as a transcription factor that regulates transcription of specific target genes. Mutations, overexpression, rearrangement and translocation of the gene encoding MYC have been associated with a variety of hematopoietic tumors, leukemias and lymphomas, including Burkitt lymphoma. There is evidence to show that alternative translation initiations from an upstream, in-frame non-AUG (CUG) and a downstream AUG start site result in the production of two isoforms with distinct N-termini. The synthesis of non-AUG initiated protein is suppressed in Burkitt's lymphomas, suggesting its importance in the normal function of this gene. ¹ Lima, F.P., Am. J. Clin. Pathol. 129 (5), 723-726 (2008)
Immunogen	This MYC antibody is generated from rabbits immunized with a KLH conjugated synthetic peptide between 351-380 amino acids from human MYC.

Key Feature

Clonality	Polyclonal
Isotype	Ig
Host Species	Rabbit
Tested Applications	WB
Species Reactivity	Human
Concentration	1 mg/ml
Purification	Affinity purified

Target Information

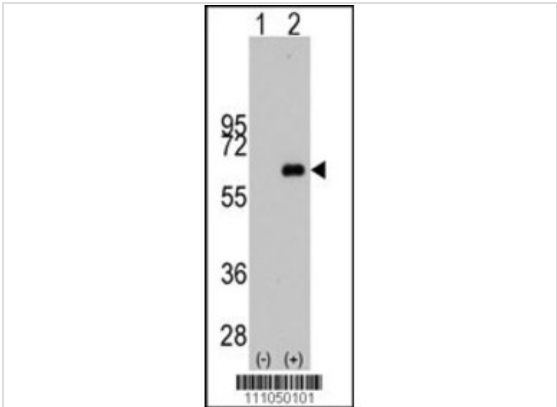
Gene Symbol	MYC
Alternative Names	Myc proto-oncogene protein, Class E basic helix-loop-helix protein 39, bHLHe39, Proto-oncogene c-Myc, Transcription factor p64, MYC, BHLHE39

Molecular Weight(MW)	49 kDa
Sequence Similarities	Predicted species reactivity based on immunogen sequence: Bovine

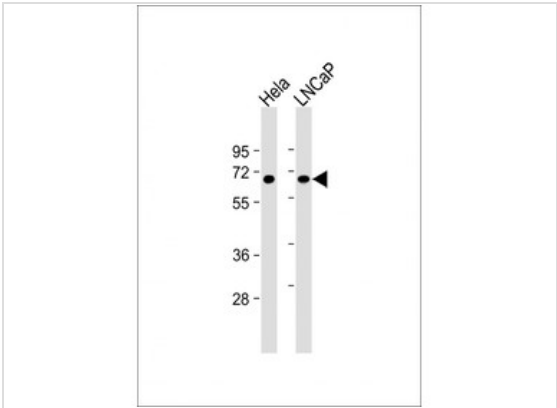
Database Links

Entrez Gene	4609
Protein Accession	P01106

Application



Application
 Western blot analysis of MYC using rabbit polyclonal MYC Antibody (S373) using 293 cell lysates (2 ug/lane) either nontransfected (Lane 1) or transiently transfected with the MYC gene (Lane 2).



Application
 Western Blot at 1:1000 dilution Lane 1: HeLa whole cell lysate Lane 2: LNCaP whole cell lysate Lysates/proteins at 20 ug per lane.

Application Notes **For WB starting dilution is: 1:1000:**

Additional Information

Form	Liquid
Storage Instructions	Store at 4°C for three months and -20°C, stable for up to one year. As with all antibodies care should be taken to avoid repeated freeze thaw cycles. Antibodies should not be exposed to prolonged high temperatures.
Storage Buffer	Supplied in PBS with 0.09% (W/V) sodium azide.
Note	The product is for research use only,not for use in diagnostic or therapeutic procedures.

order@Omnimabs.com

506 N. GARFIELD AVE #210 ALHAMBRA, CA 91801

This product is for research use only and is not approved for use in humans or in clinical diagnosis. Primary Antibodies are guaranteed for 1 year from date of receipt

