



Catalog: OM214843

Scan to get more validated information



MYC Antibody (T58)

Catalog: OM214843

☐ 100ug

Product profile

Product name	MYC Antibody (T58)
Antibody Type	Tags Antibodies

Key Feature

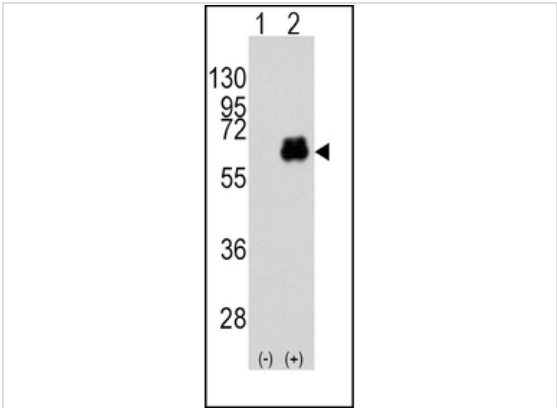
Clonality	Polyclonal
Isotype	Ig
Host Species	Rabbit
Tested Applications	WB
Species Reactivity	Human
Concentration	1 mg/ml
Purification	

Target Information

Gene Synonyms	BHLHE39
Alternative Names	MYC; BHLHE39; Myc proto-oncogene protein; Class E basic helix-loop-helix protein 39; Proto-oncogene c-Myc; Transcription factor p64
Molecular Weight(MW)	48804 Da
Function	Participates in the regulation of gene transcription. Binds DNA in a non-specific manner, yet also specifically recognizes the core sequence 5'-CAC[GA]TG-3'. Seems to activate the transcription of growth-related genes
Tissue Specificity	This MYC antibody is generated from rabbits immunized with a KLH conjugated synthetic peptide corresponding to amino acid residues surrounding T58 of human MYC.
Cellular Localization	Nucleus, nucleoplasm. Nucleus, nucleolus.

Database Links

Application



Application
Western blot analysis of MYC (arrow) using rabbit polyclonal MYC Antibody (T58) . 293 cell lysates (2 ug/lane) either nontransfected (Lane 1) or transiently transfected with the MYC gene (Lane 2) (Origene Technologies).

Application Notes

WB~~1:100~500:

Additional Information

Form	Liquid
Storage Instructions	For short-term storage, store at 4° C. For long-term storage, aliquot and store at -20°C or below. Avoid multiple freeze-thaw cycles.
Storage Buffer	Purified polyclonal antibody supplied in PBS with 0.09% (W/V) sodium azide. This antibody is purified through a protein A column, followed by peptide affinity purification.
Note	The product is for research use only,not for use in diagnostic or therapeutic procedures.

OmnimAbs.com

order@Omnimabs.com

506 N. GARFIELD AVE #210 ALHAMBRA, CA 91801

This product is for research use only and is not approved for use in humans or in clinical diagnosis. Primary Antibodies are guaranteed for 1 year from date of receipt