



Catalog: OM285604

Scan to get more validated information



# Myc Antibody

Catalog: OM285604

☐ 100ug

## Product profile

Product name	Myc Antibody
Antibody Type	Tags Antibodies
Product description	<p>Myc proto-oncogene encodes nuclear DNA-binding phosphoproteins that are involved in the regulation of gene expression and DNA replication during cell growth and differentiation. Myc encodes a protein of 65 kDa which is expressed in almost all normal and transformed cells. The expression correlates with the proliferation state of the cells. Transcription is repressed in quiescent or terminally differentiated cells. Expression of Myc is generally induced after mitogenic stimulation of cells or serum induction. Myc therefore is an important positive regulator of cell growth and proliferation. Myc has been demonstrated also to be a potent inducer of apoptosis when expressed in the absence of serum or growth factors. Apoptosis may serve also as a protective mechanism to prevent tumorigenicity elicited by deregulated Myc expression. Sequences of the Myc oncogene have been highly conserved throughout evolution, from Drosophila to vertebrates<sup>1</sup> Jin Z, et al. (2004) J Biol Chem. 279 (38): 40209-40219. Welcker M, et al. (2004) Proc Natl Acad Sci U S A. 101 (24): 9085-9090. Baudino T A, et al. (2001) Mol Cell Biol. 21: 691-702. Blackwood E M, et al. (1991) Science. 251:1211-1217. Henriksson M, et al. (1996) Adv Cancer Res. 68: 109-182.</p>
Immunogen	Myc (Ab-58) antibody was raised against a peptide sequence around aa.56~60 (L-P-T-P-P) derived from Human Myc.

## Key Feature

Clonality	Polyclonal
Host Species	Rabbit
Tested Applications	WB
Species Reactivity	Human
Concentration	1 mg/ml
Purification	Affinity purified

## Target Information

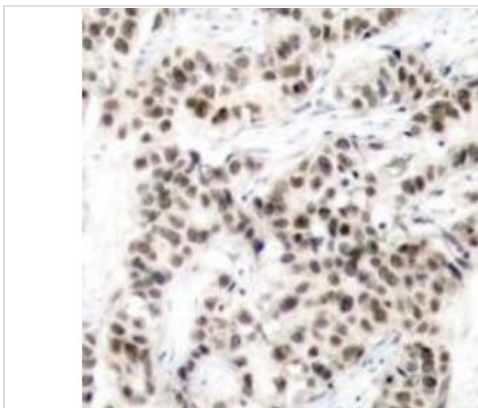
Gene Symbol	MYC
-------------	-----

<b>Alternative Names</b>	MRTL, MYCC, c-Myc, bHLHe39, MADH2, MADR2, c-myc
<b>Molecular Weight(MW)</b>	60 kDa
<b>Tissue Specificity</b>	This antibody detects endogenous level of total Myc protein.

## Database Links

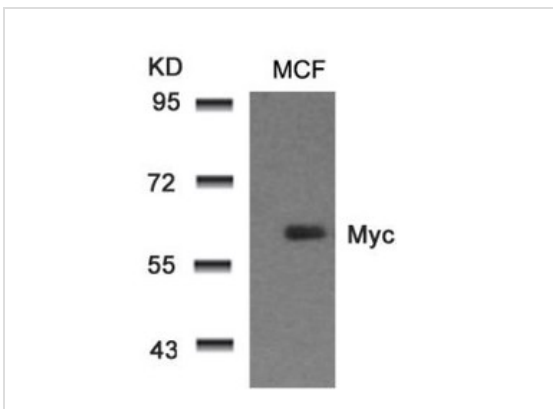
<b>Entrez Gene</b>	4609
<b>Protein Accession</b>	NP_002458.2

## Application



### Application

Immunohistochemical analysis of paraffin-embedded human breast carcinoma tissue using Myc (Ab-58).



### Application

Western blot analysis of lysed extracts from MCF cells using Myc (Ab-58).

<b>Application Notes</b>	<b>Western Blot: 1:500~1:1000, Immunohistochemistry: 1:50~1:100:</b>
--------------------------	--

## Additional Information

<b>Form</b>	Liquid
<b>Storage Instructions</b>	Store antibody at -20°C for up to one year.
<b>Storage Buffer</b>	Antibody supplied in phosphate buffered saline (without Mg <sup>2+</sup> and Ca <sup>2+</sup> ), pH 7.4, 150mM NaCl, 0.02% sodium azide and 50% glycerol.
<b>Note</b>	The product is for research use only, not for use in diagnostic or therapeutic procedures.

---

order@Omnimabs.com

506 N. GARFIELD AVE #210 ALHAMBRA, CA 91801

This product is for research use only and is not approved for use in humans or in clinical diagnosis. Primary Antibodies are guaranteed for 1 year from date of receipt

---