



**Catalog: OM264289**

Scan to get more validated information



# Myc tag antibody

Catalog: OM264289

☐ 100ug

## Product profile

Product name	Myc tag antibody
Antibody Type	Tags Antibodies
Product description	Mouse Monoclonal antibody to Myc-TagEpitope tags are artificial epitopes useful for the labeling and detection of proteins. Epitope tags - short amino acid sequences are 'fused' to the N- or C-terminus of the protein.
Immunogen	Peptide sequence around aa. 410-419 (EQKLISEEDL) derived from human c-Myc.

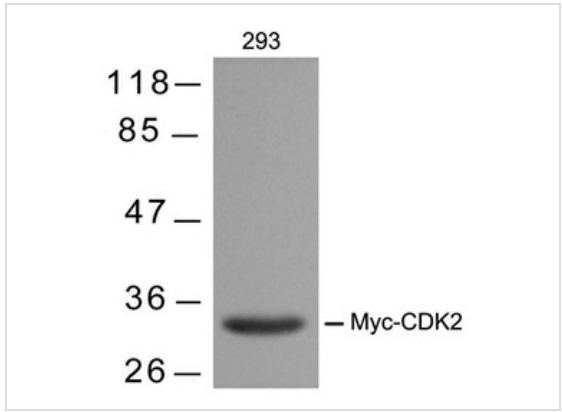
## Key Feature

Clonality	Monoclonal
Isotype	IgG1
Clone Number	5D12
Host Species	Mouse
Tested Applications	WB
Concentration	1 mg/ml (Please refer to the vial label for the specific concentration)
Purification	Affinity purified

## Target Information

Gene Synonyms	Myc Tag, Myc
Target	Myc Tag

## Application



**Application**

Western blot analysis of extracts from 293 cells transfected with Myc-CDK2 using Myc-Tag mouse mAb

**Application Notes**

Suggested starting dilutions are as follows. WB: 1:500~1:1000. Not yet tested in other applications. Optimal working dilutions should be determined experimentally by the end user.:

**Additional Information**

Form	Liquid
Storage Instructions	Keep as concentrated solution. Aliquot and store at 4°C or below. Avoid multiple freeze-thaw cycles.
Storage Buffer	phosphate buffered saline , pH 7.4, 150mM NaCl, 0.02% sodium azide and 50% glycerol.
Note	The product is for research use only,not for use in diagnostic or therapeutic procedures.

OmnimAbs.com

order@Omnimabs.com  
506 N. GARFIELD AVE #210 ALHAMBRA, CA 91801

This product is for research use only and is not approved for use in humans or in clinical diagnosis. Primary Antibodies are guaranteed for 1 year from date of receipt