



Catalog: OM638925

Scan to get more validated information



# Myosin Light Chain 2

Catalog: OM638925

☐ 100 µl

## Product profile

Product name	Myosin Light Chain 2
Antibody Type	Primary Antibodies
Product description	Encoded by the MYL2 gene, myosin regulatory light chain 2, ventricular/cardiac muscle isoform, also designated MLC-2 or MLC2v, is part of a hexameric complex of two heavy chains and four light chains predominantly expressed in adult cardiac ventricle muscle. Myosin regulatory light chain 2 binds calcium and has been shown to be a useful molecular marker for cardiac chamber specification. The co-expression of myosin regulatory light chain 7 (MYL7) and myosin regulatory light chain 2 in the outflow tract and atrioventricular canal, together with the single expression in the atrial (MYL7) and ventricular (MYL2) myocardium, permits the delineation of their boundaries. At the amino acid level there is 96% homology between the human and mouse myosin regulatory light chain sequences. Mutations in MYL2 are correlated with mid-left ventricular chamber type hypertrophic cardiomyopathy (MVC2) as well as familial hypertrophic cardiomyopathy type 10 (CMH10).
Immunogen	Peptide

## Key Feature

Clonality	Polyclonal
Isotype	IgG
Host Species	Rabbit
Tested Applications	WB ,ICC ,IHC ,FC
Species Reactivity	Human Mouse Rat
Concentration	1 mg/mL.

## Target Information

Alternative Names	Cardiac myosin light chain-2 antibody Cardiac ventricular myosin light chain 2 antibody CMH10 antibody MLC 2v antibody MLC-2 antibody MLC-2v antibody MLC2 antibody MLRV_HUMAN antibody MYL 2 antibody MYL2 antibody Myosin light chain 2 regulatory cardiac slow antibody Myosin light polypeptide 2 regulatory cardiac slow antibody Myosin regulatory light chain 2 antibody Myosin regulatory light chain 2 ventricu
-------------------	--

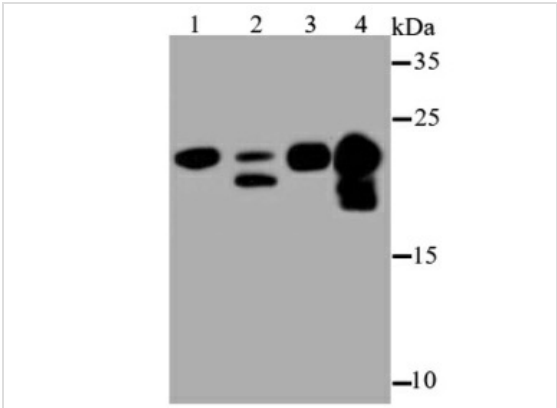
lar/cardiac muscle isoform antibody Regulatory light chain of myosin antibody RLC of myosin antibody Slow cardiac myosin regulatory light chain 2 antibody ventricular/cardiac muscle isoform antibody

Molecular Weight(MW)	19 kDa
Cellular Localization	Cytoplasm.

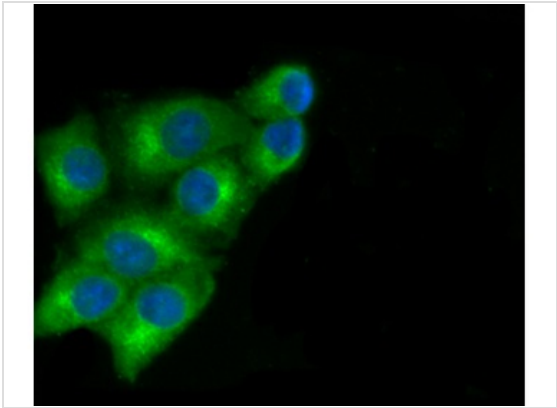
Database Links

SwissProt ID	P10916
	P51667
	P08733

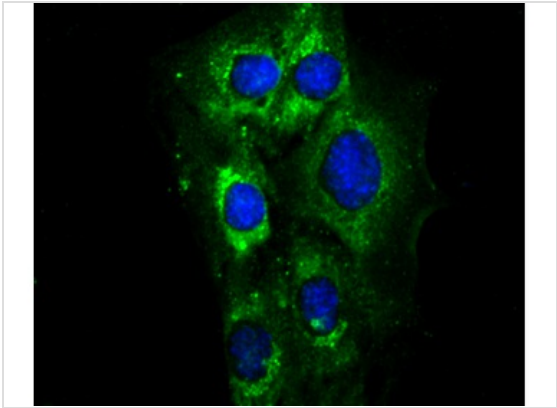
Application



**Application**  
Fig1: Western blot analysis of Myosin Light Chain 2 on different lysates using anti-Myosin Light Chain 2 antibody at 1/500 dilution. Positive control □ Lane1: Mouse skeletal muscle Lane2: Human skeletal muscle Lane3: Mouse heart Lane4: Rat heart

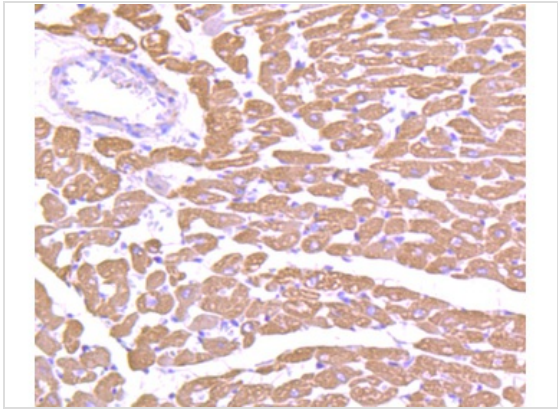
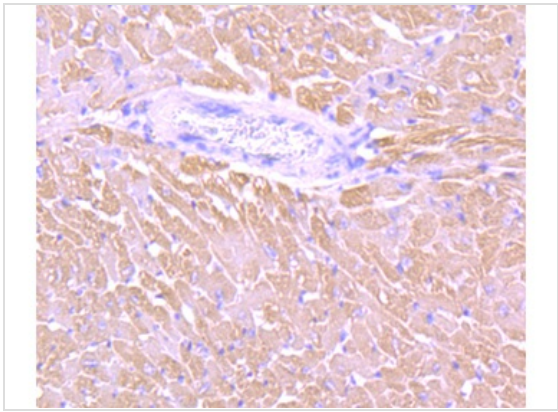


**Application**  
Fig2: ICC staining Myosin Light Chain 2 in A549 cells (green). The nuclear counter stain is DAPI (blue). Cells were fixed in paraformaldehyde, permeabilised with 0.25% Triton X100/PBS.



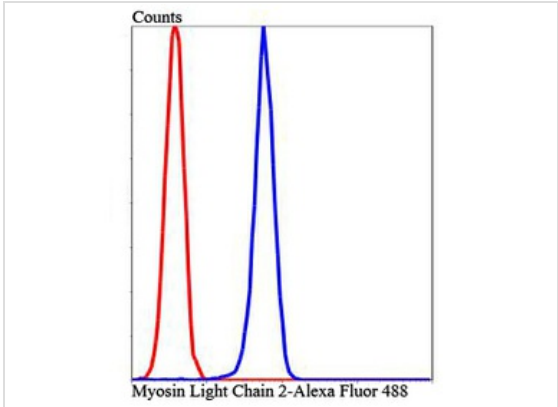
**Application**  
Fig3: ICC staining Myosin Light Chain 2 in C2C12 cells (green). The nuclear counter stain is DAPI (blue). Cells were fixed in paraformaldehyde, permeabilised with 0.25% Triton X100/PBS.

**Application**  
Fig4: Immunohistochemical analysis of paraffin-embedded mouse heart tissue using anti-Myosin Light Chain 2 antibody. Counter stained with hematoxylin.



#### Application

Fig5: Immunohistochemical analysis of paraffin-embedded rat heart tissue using anti-Myosin Light Chain 2 antibody. Counter stained with hematoxylin.



#### Application

Fig6: Flow cytometric analysis of HeLa cells with Myosin Light Chain 2 antibody at 1/100 dilution (blue) compared with an unlabelled control (cells without incubation with primary antibody; red). Alexa Fluor 488-conjugated Goat anti rabbit IgG was used as the secondary antibody.

<b>Positive Control</b>	Mouse skeletal muscle tissue lysate, human skeletal muscle tissue lysate, mouse heart tissue, rat heart tissue, A549, HeLa, C2C12.
<b>Application Notes</b>	<b>WB:</b> 1:1,000-1:2,000 <b>ICC:</b> 1:50-1:200 <b>IHC:</b> 1:50-1:200 <b>FC:</b> 1:50-1:100

### Additional Information

<b>Form</b>	Liquid
<b>Storage Instructions</b>	Store at +4°C after thawing. Aliquot store at -20°C or -80°C. Avoid repeated freeze / thaw cycles.
<b>Storage Buffer</b>	1×TBS (pH7.4), 0.5%BSA, 50%Glycerol. Preservative: 0.05% Sodium Azide.
<b>Note</b>	The product is for research use only,not for use in diagnostic or therapeutic procedures.

# OmnimAbs.com

---

order@Omnimabs.com

506 N. GARFIELD AVE #210 ALHAMBRA, CA 91801

This product is for research use only and is not approved for use in humans or in clinical diagnosis. Primary Antibodies are guaranteed for 1 year from date of receipt

---

