



Catalog: OM214996

Scan to get more validated information



NAP1L1 Antibody (C-term)

Catalog: OM214996

☐ 100ug

Product profile

| | |
|---------------|--------------------------|
| Product name | NAP1L1 Antibody (C-term) |
| Antibody Type | Primary Antibodies |

Key Feature

| | |
|---------------------|------------|
| Clonality | Polyclonal |
| Isotype | Ig |
| Host Species | Rabbit |
| Tested Applications | WB ,FC |
| Species Reactivity | Human |
| Concentration | 1 mg/ml |
| Purification | |

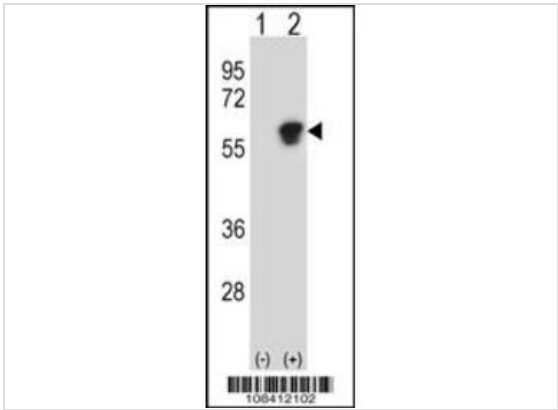
Target Information

| | |
|-----------------------|--|
| Gene Synonyms | NRP |
| Alternative Names | NAP1L1; NRP; Nucleosome assembly protein 1-like 1; NAP-1-related protein |
| Molecular Weight(MW) | 45374 Da |
| Function | May be involved in modulating chromatin formation and contribute to regulation of cell proliferation |
| Tissue Specificity | Ubiquitously expressed. |
| Cellular Localization | Nucleus. Melanosome. Note=Identified by mass spectrometry in melanosome fractions from stage I to stage IV |

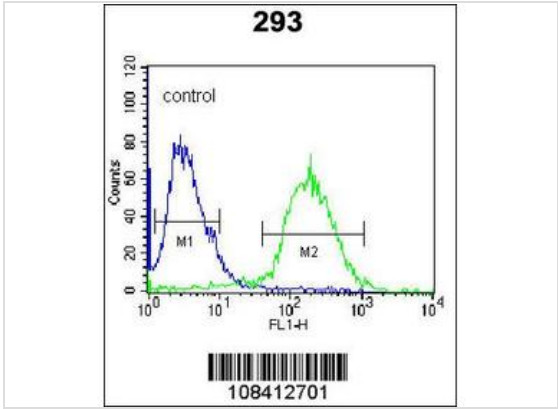
Database Links

| | |
|-------------|------|
| Entrez Gene | 4673 |
|-------------|------|

Application



Application
Western blot analysis of NAP1L1 (arrow) using rabbit polyclonal NAP1L1 Antibody . 293 cell lysates (2 ug/lane) either nontransfected (Lane 1) or transiently transfected (Lane 2) with the NAP1L1 gene.



Application
NAP1L1 Antibody (C-term) flow cytometric analysis of 293 cells (right histogram) compared to a negative control cell (left histogram).FITC-conjugated goat-anti-rabbit secondary antibodies were used for the analysis.

Application Notes WB~~1:50~100 FC~~1:10~50:

Additional Information

| | |
|----------------------|---|
| Form | Liquid |
| Storage Instructions | For short-term storage, store at 4° C. For long-term storage, aliquot and store at -20°C or below. Avoid multiple freeze-thaw cycles. |
| Storage Buffer | Purified polyclonal antibody supplied in PBS with 0.09% (W/V) sodium azide. This antibody is prepared by Saturated Ammonium Sulfate (SAS) precipitation followed by dialysis against PBS. |
| Note | The product is for research use only,not for use in diagnostic or therapeutic procedures. |

OmnimAbs.com

order@Omnimabs.com
506 N. GARFIELD AVE #210 ALHAMBRA, CA 91801
This product is for research use only and is not approved for use in humans or in clinical diagnosis. Primary Antibodies are guaranteed for 1 year from date of receipt