



Catalog: OM214999

Scan to get more validated information



# NARS Antibody (N-term)

Catalog: OM214999

☐ 100ug

## Product profile

|               |                        |
|---------------|------------------------|
| Product name  | NARS Antibody (N-term) |
| Antibody Type | Primary Antibodies     |

## Key Feature

|                     |             |
|---------------------|-------------|
| Clonality           | Polyclonal  |
| Isotype             | Ig          |
| Host Species        | Rabbit      |
| Tested Applications | WB ,IHC ,FC |
| Species Reactivity  | Human       |
| Concentration       | 1 mg/ml     |
| Purification        |             |

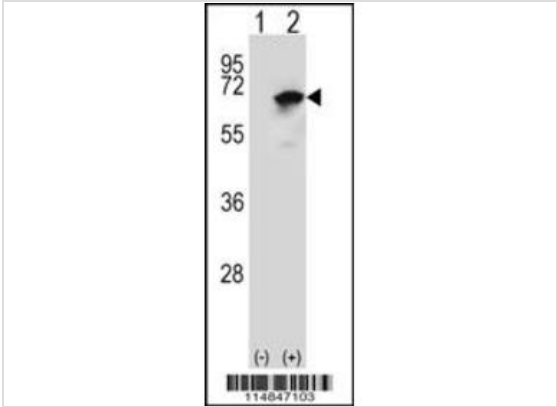
## Target Information

|                       |  |
|-----------------------|--|
| Alternative Names     | NARS; Asparagine--tRNA ligase, cytoplasmic; Asparaginyl-tRNA synthetase  |
| Molecular Weight(MW)  | 62943 Da   |
| Tissue Specificity    | This NARS antibody is generated from rabbits immunized with a KLH conjugated synthetic peptide between 31-60 amino acids from the N-terminal region of human NARS. |
| Cellular Localization | Cytoplasm.   |

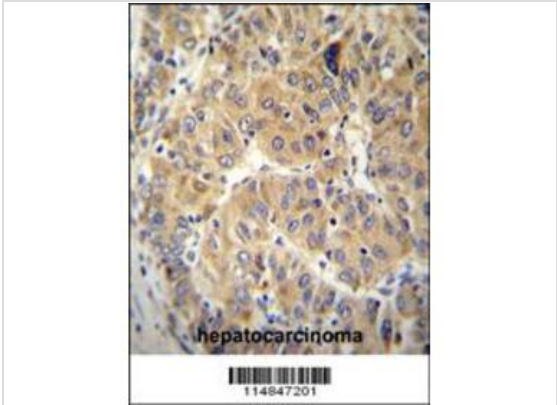
## Database Links

|                      |             |
|----------------------|-------------|
| Entrez Gene          | 4677        |
| Nucleotide Accession | NP_004530.1 |

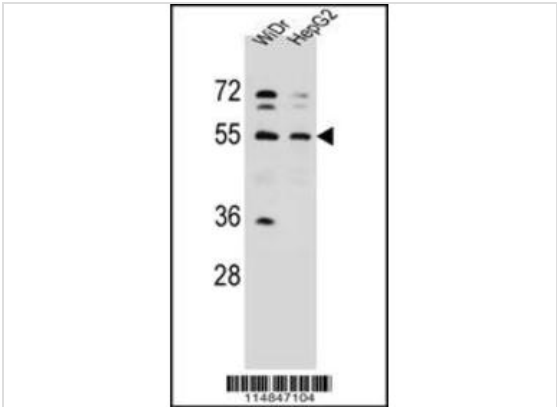
## Application



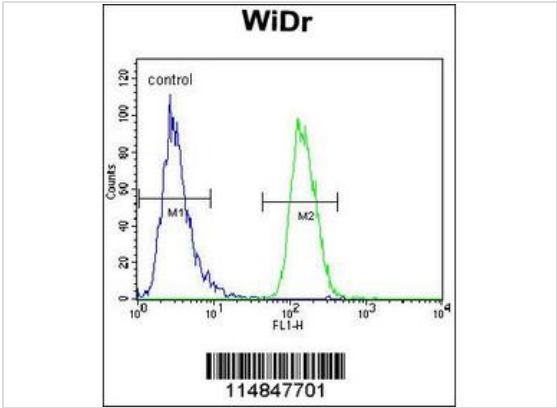
**Application**  
Western blot analysis of NARS (arrow) using rabbit polyclonal NARS Antibody (N-term) . 293 cell lysates (2 ug/lane) either nontransfected (Lane 1) or transiently transfected (Lane 2) with the NARS gene.



**Application**  
NARS Antibody (N-term) immunohistochemistry analysis in formalin fixed and paraffin embedded human hepatocarcinoma followed by peroxidase conjugation of the secondary antibody and DAB staining.This data demonstrates the use of NARS Antibody (N-term) for immunohistochemistry. Clinical relevance has not been evaluated.



**Application**  
NARS Antibody (N-term) western blot analysis in WiDr,HepG2 cell line lysates (35ug/lane).This demonstrates the NARS antibody detected the NARS protein (arrow).



**Application**  
NARS Antibody (N-term) flow cytometric analysis of WiDr cells (right histogram) compared to a negative control cell (left histogram).FITC-conjugated goat-anti-rabbit secondary antibodies were used for the analysis.

**Application Notes**      **WB~~1:50~100 IHC~~1:50~100 FC~~1:10~50:**

**Additional Information**

|                             |   |
|-----------------------------|---|
| <b>Form</b>                 | Liquid  |
| <b>Storage Instructions</b> | For short-term storage, store at 4° C. For long-term storage, aliquot and store at -20°C or below. Avoid multiple freeze-thaw cycles. |

**Storage Buffer**

Purified polyclonal antibody supplied in PBS with 0.09% (W/V) sodium azide. This antibody is prepared by Saturated Ammonium Sulfate (SAS) precipitation followed by dialysis against PBS.

**Note**

The product is for research use only, not for use in diagnostic or therapeutic procedures.

# OmnimAbs.com

---

order@Omnimabs.com

506 N. GARFIELD AVE #210 ALHAMBRA, CA 91801

This product is for research use only and is not approved for use in humans or in clinical diagnosis. Primary Antibodies are guaranteed for 1 year from date of receipt

---