



Catalog: OM215009

Scan to get more validated information



NAT2 Antibody (C-term)

Catalog: OM215009

☐ 100ug

Product profile

Product name	NAT2 Antibody (C-term)
Antibody Type	Primary Antibodies

Key Feature

Clonality	Polyclonal
Isotype	Ig
Host Species	Rabbit
Tested Applications	WB ,IHC ,FC
Species Reactivity	Human
Concentration	1 mg/ml
Purification	

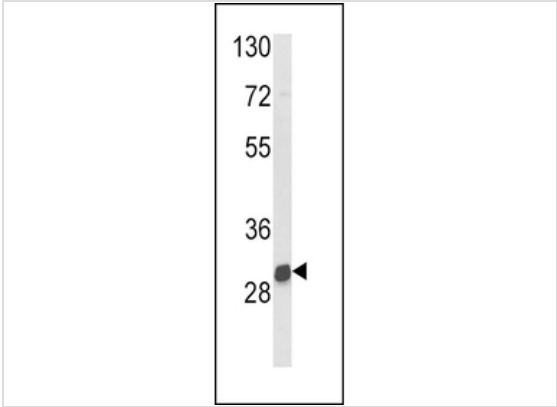
Target Information

Gene Synonyms	AAC2
Alternative Names	NAT2; AAC2; Arylamine N-acetyltransferase 2; Arylamide acetylase 2; N-acetyltransferase type 2; Polymorphic arylamine N-acetyltransferase
Molecular Weight(MW)	33542 Da
Function	Participates in the detoxification of a plethora of hydrazine and arylamine drugs. Catalyzes the N- or O-acetylation of various arylamine and heterocyclic amine substrates and is able to bioactivate several known carcinogens
Tissue Specificity	This NAT2 antibody is generated from rabbits immunized with a KLH conjugated synthetic peptide between 233~262 amino acids from the C-terminal region of human NAT2. This antibody recognizes both human NAT2 and NAT1.
Cellular Localization	Cytoplasm.

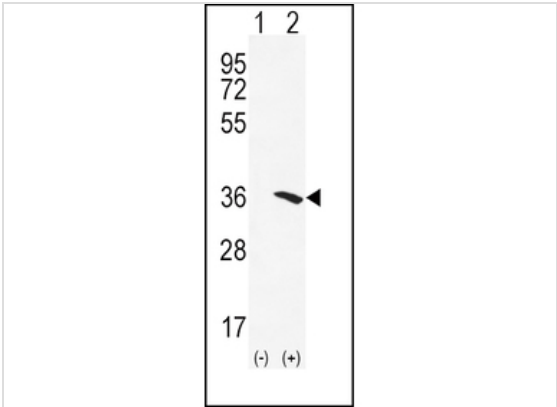
Database Links

Entrez Gene 10

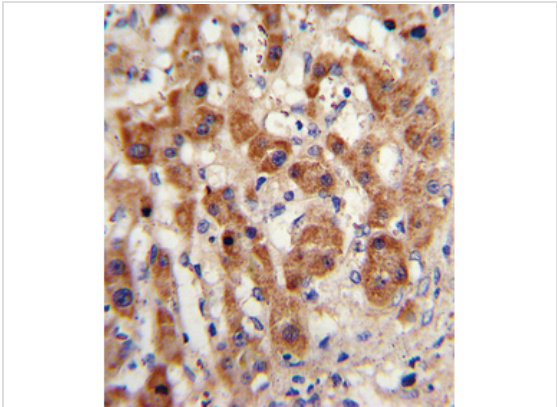
Application



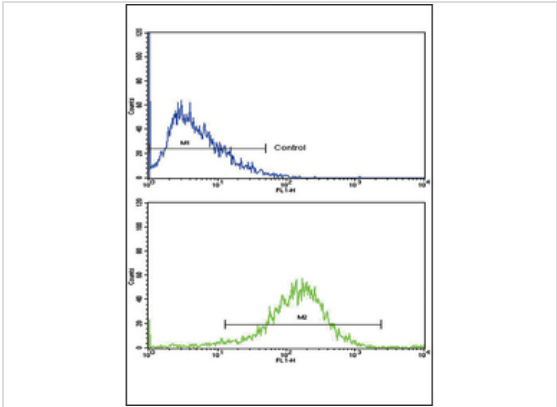
Application
Western blot analysis of NAT2 Antibody (C-term) in mouse kidney tissue lysates (35ug/lane).NAT2 (arrow) was detected using the purified Pab.



Application
Western blot analysis of NAT2 (arrow) using rabbit polyclonal NAT2 Antibody (C-term) . 293 cell lysates (2 ug/lane) either nontransfected (Lane 1) or transiently transfected (Lane 2) with the NAT2 gene.



Application
Formalin-fixed and paraffin-embedded human hepatocarcinoma with NAT2 Antibody (C-term), which was peroxidase-conjugated to the secondary antibody, followed by DAB staining. This data demonstrates the use of this antibody for immunohistochemistry; clinical relevance has not been evaluated.



Application
Flow cytometric analysis of HepG2 cells using NAT2 Antibody (C-term)(bottom histogram) compared to a negative control cell (top histogram). FITC-conjugated goat-anti-rabbit secondary antibodies were used for the analysis.

Additional Information

Form	Liquid
Storage Instructions	For short-term storage, store at 4° C. For long-term storage, aliquot and store at -20°C or below. Avoid multiple freeze-thaw cycles.
Storage Buffer	Purified polyclonal antibody supplied in PBS with 0.09% (W/V) sodium azide. This antibody is purified through a protein A column, followed by peptide affinity purification.
Note	The product is for research use only,not for use in diagnostic or therapeutic procedures.

OmnimAbs.com

order@Omnimabs.com
506 N. GARFIELD AVE #210 ALHAMBRA, CA 91801
This product is for research use only and is not approved for use in humans or in clinical diagnosis. Primary Antibodies are guaranteed for 1 year from date of receipt