



Catalog: OM215055

Scan to get more validated information



NCF1C Antibody (C-term)

Catalog: OM215055

☐ 100ug

Product profile

Product name	NCF1C Antibody (C-term)
Antibody Type	Primary Antibodies

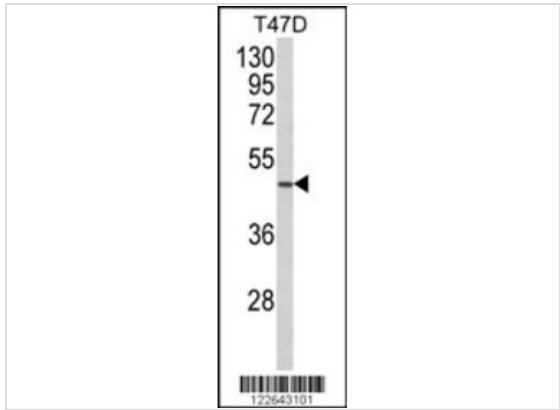
Key Feature

Clonality	Polyclonal
Isotype	Ig
Host Species	Rabbit
Tested Applications	WB ,IHC ,FC
Species Reactivity	Human
Concentration	1 mg/ml
Purification	

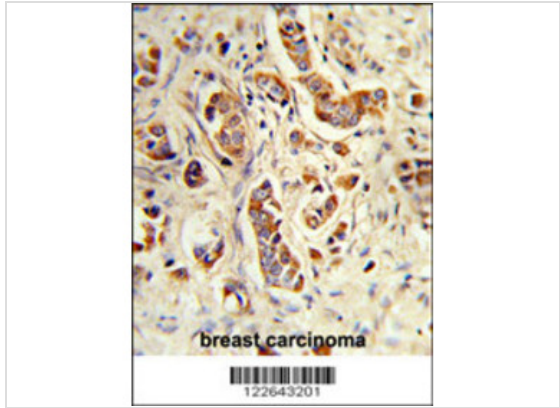
Target Information

Gene Synonyms	SH3PXD1C
Alternative Names	NCF1C; SH3PXD1C; Putative neutrophil cytosol factor 1C; Putative SH3 and PX domain-containing protein 1C
Molecular Weight(MW)	41851 Da
Function	May be required for activation of the latent NADPH oxidase (necessary for superoxide production) (By similarity)
Tissue Specificity	This NCF1C antibody is generated from rabbits immunized with a KLH conjugated synthetic peptide between 283~312 amino acids from the C-terminal region of human NCF1C.
Cellular Localization	Cytoplasm (By similarity).

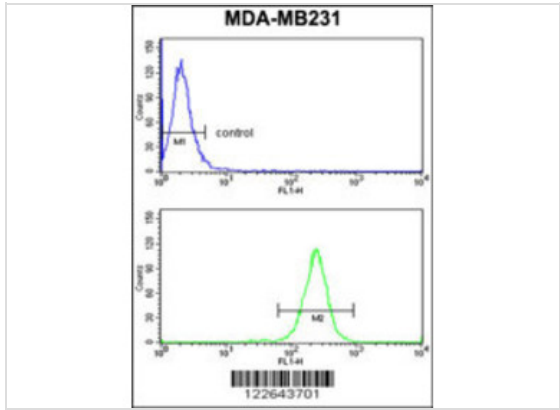
Application



Application
 Western blot analysis of NCF1C Antibody (C-term) in T47D cell line lysates (35ug/lane). NCF1C (arrow) was detected using the purified Pab.



Application
 Formalin-fixed and paraffin-embedded human breast carcinoma reacted with NCF1C Antibody (C-term), which was peroxidase-conjugated to the secondary antibody, followed by DAB staining. This data demonstrates the use of this antibody for immunohistochemistry; clinical relevance has not been evaluated.



Application
 NCF1C Antibody (C-term) flow cytometry analysis of MDA-MB231 cells (bottom histogram) compared to a negative control cell (top histogram). FITC-conjugated goat-anti-rabbit secondary antibodies were used for the analysis.

Application Notes **WB~1:100~500 IHC~1:50~100 FC~1:10~50:**

Additional Information

Form	Liquid
Storage Instructions	For short-term storage, store at 4° C. For long-term storage, aliquot and store at -20°C or below. Avoid multiple freeze-thaw cycles.
Storage Buffer	Purified polyclonal antibody supplied in PBS with 0.09% (W/V) sodium azide. This antibody is purified through a protein A column, followed by peptide affinity purification.
Note	The product is for research use only, not for use in diagnostic or therapeutic procedures.

OmnimAbs.com

506 N. GARFIELD AVE #210 ALHAMBRA, CA 91801

This product is for research use only and is not approved for use in humans or in clinical diagnosis. Primary Antibodies are guaranteed for 1 year from date of receipt

