



Catalog: OM215056

Scan to get more validated information



NCK1 Antibody (N-term)

Catalog: OM215056

☐ 100ug

Product profile

Product name	NCK1 Antibody (N-term)
Antibody Type	Primary Antibodies

Key Feature

Clonality	Polyclonal
Isotype	Ig
Host Species	Rabbit
Tested Applications	WB ,FC
Species Reactivity	Human
Concentration	1 mg/ml
Purification	

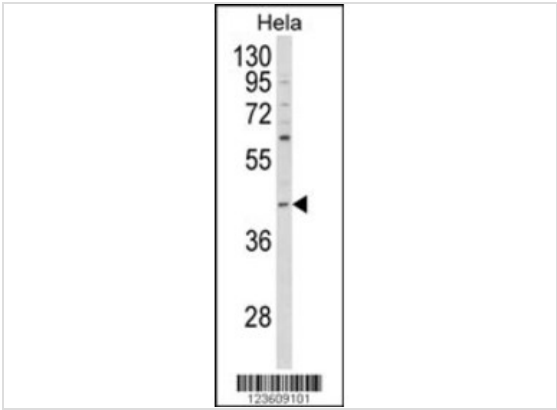
Target Information

Gene Synonyms	NCK
Alternative Names	NCK1; NCK; Cytoplasmic protein NCK1; NCK adaptor protein 1; SH2/SH3 adaptor protein NCK-alpha
Molecular Weight(MW)	42864 Da
Function	Adapter protein which associates with tyrosine- phosphorylated growth factor receptors, such as KDR and PDGFRB, or their cellular substrates. Maintains low levels of EIF2S1 phosphorylation by promoting its dephosphorylation by PP1. Plays a role in the DNA damage response, not in the detection of the damage by ATM/ATR, but for efficient activation of downstream effectors, such as that of CHEK2. Plays a role in ELK1-dependent transcriptional activation in response to activated Ras signaling
Tissue Specificity	This NCK1 antibody is generated from rabbits immunized with a KLH conjugated synthetic peptide between 9~38 amino acids from the N-terminal region of human NCK1.
Cellular Localization	Cytoplasm. Endoplasmic reticulum. Nucleus. Note=Mostly cytoplasmic, but shuttles between the cytoplasm and the nucleus. Import into the nucleus requires the interaction with SOCS7. Predominantly nuclear following genotoxic stresses, such as UV irradiation, hydroxyurea or mitomycin C treatments

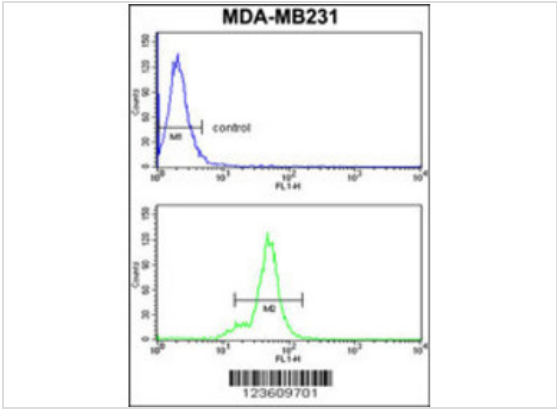
Database Links

Entrez Gene	4690
-------------	------

Application



Application
Western blot analysis of NCK1 Antibody (N-term) in HeLa cell line lysates (35ug/lane). NCK1 (arrow) was detected using the purified Pab.



Application
NCK1 Antibody (N-term) flow cytometry analysis of MDA-MB231 cells (bottom histogram) compared to a negative control cell (top histogram). FITC-conjugated goat-anti-rabbit secondary antibodies were used for the analysis.

Application Notes	WB~~1:100~500 FC~~1:10~50:
-------------------	----------------------------

Additional Information

Form	Liquid
Storage Instructions	For short-term storage, store at 4° C. For long-term storage, aliquot and store at -20°C or below. Avoid multiple freeze-thaw cycles.
Storage Buffer	Purified polyclonal antibody supplied in PBS with 0.09% (W/V) sodium azide. This antibody is purified through a protein A column, followed by peptide affinity purification.
Note	The product is for research use only,not for use in diagnostic or therapeutic procedures.

OmnimAbs.com

