



Catalog: OM215082

Scan to get more validated information



NDEL1 Antibody (Center)

Catalog: OM215082

☐ 100ug

Product profile

Product name	NDEL1 Antibody (Center)
Antibody Type	Primary Antibodies

Key Feature

Clonality	Polyclonal
Isotype	Ig
Host Species	Rabbit
Tested Applications	WB ,IHC ,FC
Species Reactivity	Human
Concentration	1 mg/ml
Purification	

Target Information

Gene Synonyms	EOPA, MITAP1, NUDEL
Alternative Names	NDEL1; EOPA; MITAP1; NUDEL; Nuclear distribution protein nudeE-like 1; Mitosin-associated protein 1
Molecular Weight(MW)	38375 Da
Function	<p>Required for organization of the cellular microtubule array and microtubule anchoring at the centrosome. May regulate microtubule organization at least in part by targeting the microtubule severing protein KATNA1 to the centrosome. Also positively regulates the activity of the minus-end directed microtubule motor protein dynein. May enhance dynein-mediated microtubule sliding by targeting dynein to the microtubule plus ends. Required for several dynein- and microtubule-dependent processes such as the maintenance of Golgi integrity, the centripetal motion of secretory vesicles and the coupling of the nucleus and centrosome. Also required during brain development for the migration of newly formed neurons from the ventricular/subventricular zone toward the cortical plate. Plays a role, together with DISC1, in the regulation of neurite outgrowth Required for mitosis in some cell types but appears to be dispensable for mitosis in cortical neuronal progenitors, which instead requires NDE1. Facilitates the polymerization of neurofilaments fr</p>

om the individual subunits NEFH and NEFL

Tissue Specificity

Expressed in brain, heart, kidney, liver, lung, pancreas, placenta and skeletal muscle

Cellular Localization

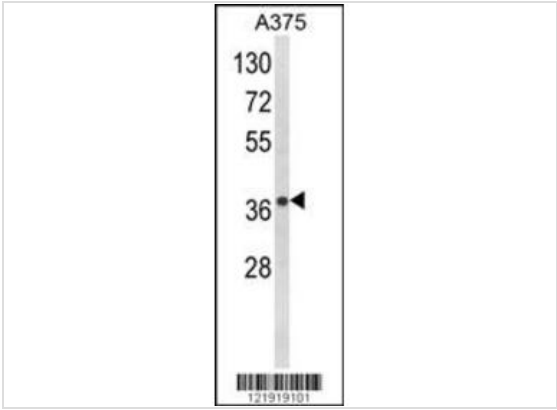
Cytoplasm, cytoskeleton. Cytoplasm, cytoskeleton, centrosome. Chromosome, centromere, kinetochore
Cytoplasm, cytoskeleton, spindle. Note=Localizes to the cell body of the motor neurons and colocalizes
with assembled neurofilaments within axonal processes. Localizes to the microtubules of the manchette i
n elongated spermatids. Colocalizes with DISC1 in the perinuclear region, including the centrosome (By si
milarity) Localizes to the interphase centrosome and the mitotic spindle Localizes to the kinetochore in a
CENPF-dependent manner

Database Links

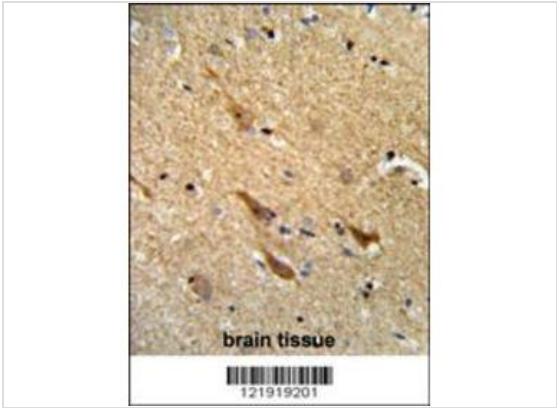
Entrez Gene

81565

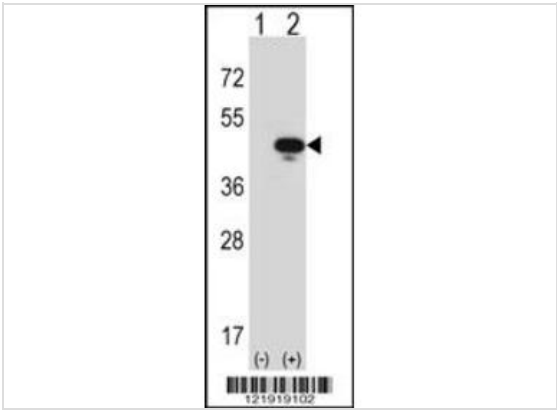
Application



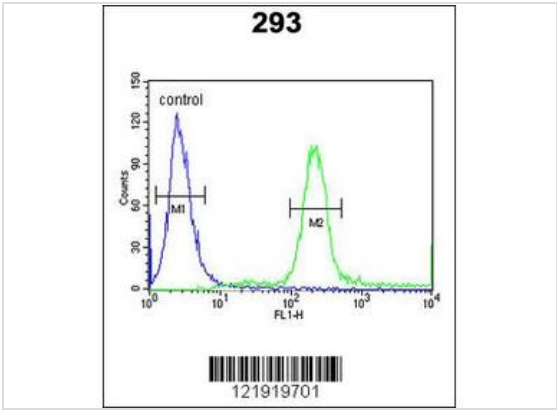
Application
Western blot analysis of NDEL1 Antibody (Center) in A375 cell line lysates (35ug/lane). NDEL1 (arrow) was detected using the purified Pab.



Application
Formalin-fixed and paraffin-embedded human brain reacted with NDEL1 Antibody (Center), which was peroxidase-conjugated to the secondary antibody, followed by DAB staining. This data demonstrates the use of this antibody for immunohistochemistry; clinical relevance has not been evaluated.



Application
Western blot analysis of NDEL1 (arrow) using rabbit polyclonal NDEL1 Antibody (Center) . 293 cell lysates (2 ug/lane) either nontransfected (Lane 1) or transiently transfected (Lane 2) with the NDEL1 gene.



Application
NDEL1 Antibody (Center) flow cytometric analysis of 293 cells (right histogram) compared to a negative control cell (left histogram).FITC-conjugated goat-anti-rabbit secondary antibodies were used for the analysis.

Application Notes WB~~1:100~500 IHC~~1:50~100 FC~~1:10~50:

Additional Information

Form	Liquid
Storage Instructions	For short-term storage, store at 4° C. For long-term storage, aliquot and store at -20°C or below. Avoid multiple freeze-thaw cycles.

Storage Buffer

Purified polyclonal antibody supplied in PBS with 0.09% (W/V) sodium azide. This antibody is purified through a protein A column, followed by peptide affinity purification.

Note

The product is for research use only, not for use in diagnostic or therapeutic procedures.

OmnimAbs.com

order@Omnimabs.com

506 N. GARFIELD AVE #210 ALHAMBRA, CA 91801

This product is for research use only and is not approved for use in humans or in clinical diagnosis. Primary Antibodies are guaranteed for 1 year from date of receipt

