



Catalog: OM215090

Scan to get more validated information



NDN Antibody (N-term)

Catalog: OM215090

☐ 100ug

Product profile

| | |
|---------------|-----------------------|
| Product name | NDN Antibody (N-term) |
| Antibody Type | Primary Antibodies |

Key Feature

| | |
|---------------------|------------|
| Clonality | Polyclonal |
| Isotype | Ig |
| Host Species | Rabbit |
| Tested Applications | WB ,FC |
| Species Reactivity | Human |
| Concentration | 1 mg/ml |
| Purification | |

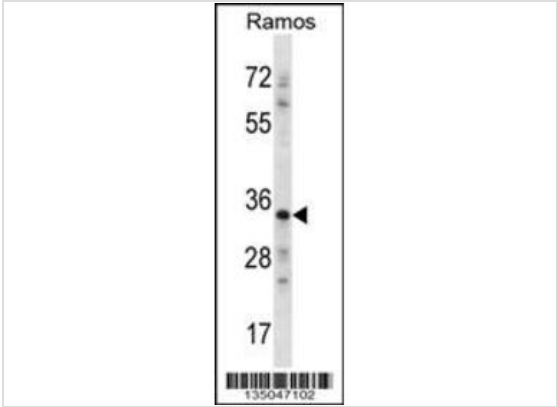
Target Information

| | |
|-----------------------|--|
| Alternative Names | NDN; Necdin |
| Molecular Weight(MW) | 36086 Da |
| Function | Growth suppressor that facilitates the entry of the cell into cell cycle arrest. Functionally similar to the retinoblastoma protein it binds to and represses the activity of cell-cycle- promoting proteins such as SV40 large T antigen, adenovirus E1A, and the transcription factor E2F. Necdin also interacts with p53 and works in an additive manner to inhibit cell growth. Functions also as transcription factor and binds directly to specific guanosine-rich DNA sequences (By similarity) |
| Tissue Specificity | Almost ubiquitous. Detected in fetal brain, lung, liver and kidney; in adult heart, brain, placenta, lung, liver, skeletal muscle, kidney, pancreas, spleen, thymus, prostate, testis, ovary, small intestine and colon. Not detected in peripheral blood leukocytes. In brain, restricted to post- mitotic neurons |
| Cellular Localization | Perikaryon. Nucleus. Note=Neural perikarya, translocates to the nucleus of postmitotic neurons and interacts with the nuclear matrix |

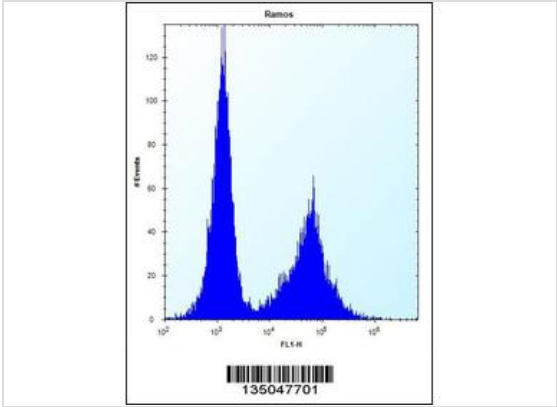
Database Links

| | |
|----------------------|-------------|
| Entrez Gene | 4692 |
| Nucleotide Accession | NP_002478.1 |

Application



Application
NDN Antibody (N-term) western blot analysis in Ramos cell line lysates (35ug/lane).This demonstrates the NDN antibody detected the NDN protein (arrow).



Application
NDN Antibody (N-term) flow cytometric analysis of Ramos cells (right histogram) compared to a negative control cell (left histogram).FITC-conjugated donkey-anti-rabbit secondary antibodies were used for the analysis.

| | |
|-------------------|----------------------------|
| Application Notes | WB~~1:100~500 FC~~1:10~50: |
|-------------------|----------------------------|

Additional Information

| | |
|----------------------|--|
| Form | Liquid |
| Storage Instructions | For short-term storage, store at 4° C. For long-term storage, aliquot and store at -20°C or below. Avoid multiple freeze-thaw cycles. |
| Storage Buffer | Purified polyclonal antibody supplied in PBS with 0.09% (W/V) sodium azide. This antibody is purified through a protein A column, followed by peptide affinity purification. |
| Note | The product is for research use only,not for use in diagnostic or therapeutic procedures. |

OmnimAbs.com

