



Catalog: OM215115

Scan to get more validated information



# NDUFA10 Antibody (Center)

Catalog: OM215115

☐ 100ug

## Product profile

**Product name** NDUFA10 Antibody (Center)

**Antibody Type** Primary Antibodies

## Key Feature

**Clonality** Polyclonal

**Isotype** Ig

**Host Species** Rabbit

**Tested Applications** WB ,IHC ,FC

**Species Reactivity** Human

**Concentration** 1 mg/ml

**Purification**

## Target Information

**Alternative Names** NDUFA10; NADH dehydrogenase [ubiquinone] 1 alpha subcomplex subunit 10, mitochondrial; Complex I-4 2kD; NADH-ubiquinone oxidoreductase 42 kDa subunit

**Molecular Weight(MW)** 40751 Da

**Function** Accessory subunit of the mitochondrial membrane respiratory chain NADH dehydrogenase (Complex I), that is believed not to be involved in catalysis. Complex I functions in the transfer of electrons from NADH to the respiratory chain. The immediate electron acceptor for the enzyme is believed to be ubiquinone

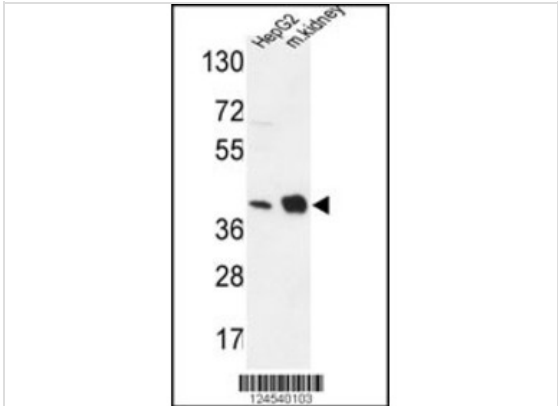
**Tissue Specificity** This NDUFA10 antibody is generated from rabbits immunized with a KLH conjugated synthetic peptide between 259~289 amino acids from the Central region of human NDUFA10.

**Cellular Localization** Mitochondrion matrix.

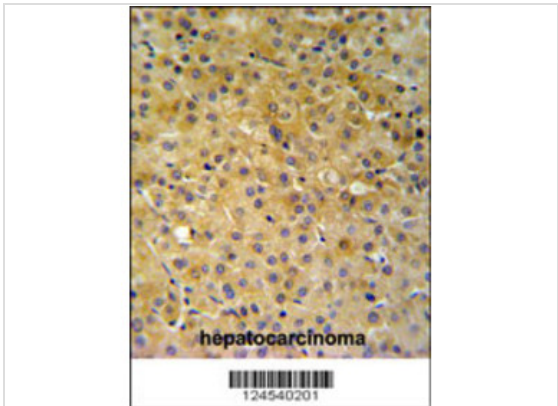
## Database Links

**Entrez Gene** 4705

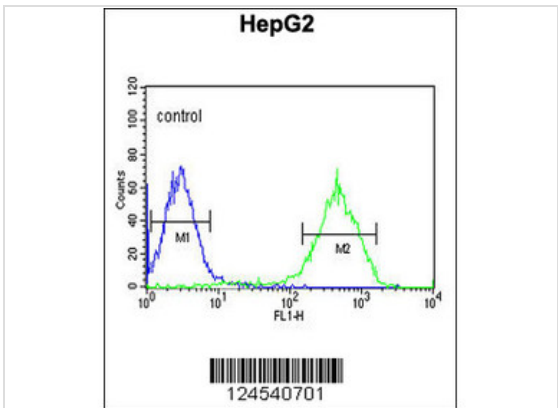
Application



**Application**  
NDUFA10 Antibody (Center) western blot analysis in HepG2 cell line and mouse kidney tissue lysates (35ug/lane).This demonstrates the NDUFA10 antibody detected the NDUFA10 protein (arrow).



**Application**  
NDUFA10 Antibody (Center) IHC analysis in formalin fixed and paraffin embedded hepatocarcinoma followed by peroxidase conjugation of the secondary antibody and DAB staining. This data demonstrates the use of the NDUFA10 Antibody (Center) for immunohistochemistry. Clinical relevance has not been evaluated.



**Application**  
NDUFA10 Antibody (Center) flow cytometric analysis of HepG2 cells (right histogram) compared to a negative control cell (left histogram).FIT C-conjugated goat-anti-rabbit secondary antibodies were used for the analysis.

**Application Notes**      **WB~~1:100~500 IHC~~1:50~100 FC~~1:10~50:**

Additional Information

Form	Liquid
Storage Instructions	For short-term storage, store at 4° C. For long-term storage, aliquot and store at -20°C or below. Avoid multiple freeze-thaw cycles.
Storage Buffer	Purified polyclonal antibody supplied in PBS with 0.09% (W/V) sodium azide. This antibody is purified through a protein A column, followed by peptide affinity purification.
Note	The product is for research use only,not for use in diagnostic or therapeutic procedures.

# OmnimAbs.com

---

order@Omnimabs.com

506 N. GARFIELD AVE #210 ALHAMBRA, CA 91801

This product is for research use only and is not approved for use in humans or in clinical diagnosis. Primary Antibodies are guaranteed for 1 year from date of receipt

---