



Catalog: OM215118

Scan to get more validated information



NDUFA6 Antibody (C-term)

Catalog: OM215118

☐ 100ug

Product profile

Product name	NDUFA6 Antibody (C-term)
Antibody Type	Primary Antibodies

Key Feature

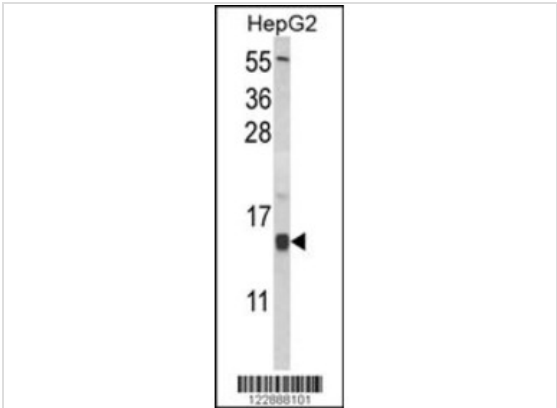
Clonality	Polyclonal
Isotype	Ig
Host Species	Rabbit
Tested Applications	WB ,IHC ,FC
Species Reactivity	Human
Concentration	1 mg/ml
Purification	

Target Information

Gene Synonyms	LYRM6, NADHB14
Alternative Names	NDUFA6; LYRM6; NADHB14; NADH dehydrogenase [ubiquinone] 1 alpha subcomplex subunit 6; Complex I-B14; LYR motif-containing protein 6; NADH-ubiquinone oxidoreductase B14 subunit
Molecular Weight(MW)	17871 Da
Function	Accessory subunit of the mitochondrial membrane respiratory chain NADH dehydrogenase (Complex I), that is believed to be not involved in catalysis. Complex I functions in the transfer of electrons from NADH to the respiratory chain. The immediate electron acceptor for the enzyme is believed to be ubiquinone
Tissue Specificity	This NDUFA6 antibody is generated from rabbits immunized with a KLH conjugated synthetic peptide between 99~128 amino acids from the C-terminal region of human NDUFA6.
Cellular Localization	Mitochondrion inner membrane; Peripheral membrane protein; Matrix side

Database Links

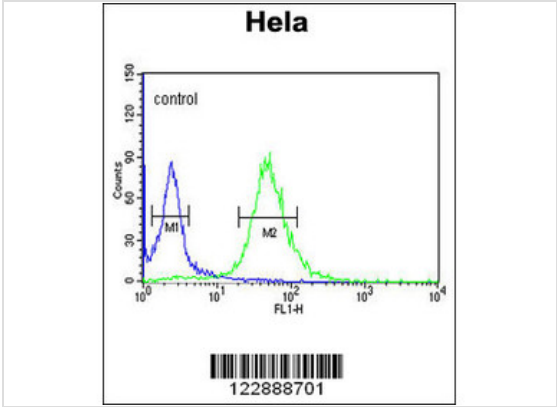
Application



Application
Western blot analysis of NDUFA6 Antibody (C-term) in HepG2 cell line lysates (35ug/lane). NDUFA6 (arrow) was detected using the purified Pab.



Application
Formalin-fixed and paraffin-embedded human skeletal muscle reacted with NDUFA6 Antibody (C-term), which was peroxidase-conjugated to the secondary antibody, followed by DAB staining. This data demonstrates the use of this antibody for immunohistochemistry; clinical relevance has not been evaluated.



Application
NDUFA6 Antibody (C-term) flow cytometric analysis of HeLa cells (right histogram) compared to a negative control cell (left histogram).FITC-conjugated goat-anti-rabbit secondary antibodies were used for the analysis.

Application Notes **WB~~1:100~500 IHC~~1:50~100 FC~~1:10~50:**

Additional Information

Form	Liquid
Storage Instructions	For short-term storage, store at 4° C. For long-term storage, aliquot and store at -20°C or below. Avoid multiple freeze-thaw cycles.
Storage Buffer	Purified polyclonal antibody supplied in PBS with 0.09% (W/V) sodium azide. This antibody is purified through a protein A column, followed by peptide affinity purification.
Note	The product is for research use only,not for use in diagnostic or therapeutic procedures.

OmnimAbs.com

order@Omnimabs.com
506 N. GARFIELD AVE #210 ALHAMBRA, CA 91801
This product is for research use only and is not approved for use in humans or in clinical diagnosis. Primary Antibodies are guaranteed for 1 year from date of receipt
