



Catalog: OM215221

Scan to get more validated information



# NEURL1B Antibody (N-term)

Catalog: OM215221

☐ 100ug

## Product profile

Product name	NEURL1B Antibody (N-term)
Antibody Type	Primary Antibodies

## Key Feature

Clonality	Polyclonal
Isotype	Ig
Host Species	Rabbit
Tested Applications	WB ,IHC ,FC
Species Reactivity	Human
Concentration	1 mg/ml
Purification	

## Target Information

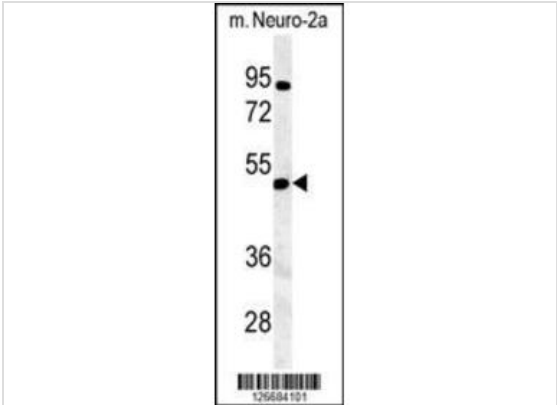
Gene Synonyms	NEURL3
Alternative Names	NEURL1B; NEURL3; E3 ubiquitin-protein ligase NEURL1B; Neuralized-like protein 1B; Neuralized-like protein 3
Molecular Weight(MW)	59270 Da
Function	E3 ubiquitin-protein ligase involved in regulation of the Notch pathway through influencing the stability and activity of several Notch ligands
Tissue Specificity	Highest expression in brain, prostate and small intestine. In the brain the levels are higher in fetal than in adult stage. In the adult brain the highest levels are detected in the olfactory system, cerebellar cortex, optic nerve and the frontal lobe
Cellular Localization	Cytoplasm.

## Database Links

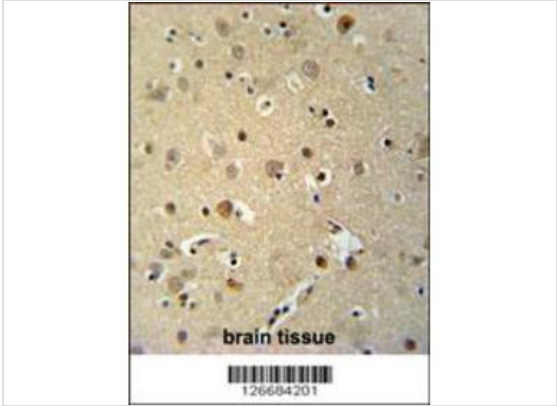
Entrez Gene54492

Nucleotide AccessionNP\_001136123.1

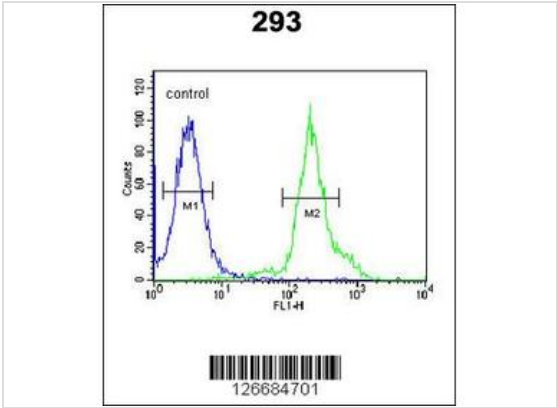
Application



**Application**  
NEURL1B Antibody (N-term) western blot analysis in Neuro-2a cell line lysates (35ug/lane).This demonstrates the NEURL1B antibody detected the NEURL1B protein (arrow).



**Application**  
NEURL1B Antibody (N-term) immunohistochemistry analysis in formalin fixed and paraffin embedded human brain tissue followed by peroxidase conjugation of the secondary antibody and DAB staining. This data demonstrates the use of the NEURL1B Antibody (N-term) for immunohistochemistry. Clinical relevance has not been evaluated.



**Application**  
NEURL1B Antibody (N-term) flow cytometric analysis of 293 cells (right histogram) compared to a negative control cell (left histogram).FITC-conjugated goat-anti-rabbit secondary antibodies were used for the analysis.

Application NotesWB~~1:100~500 IHC~~1:50~100 FC~~1:10~50:

Additional Information

Form	Liquid
Storage Instructions	For short-term storage, store at 4° C. For long-term storage, aliquot and store at -20°C or below. Avoid multiple freeze-thaw cycles.
Storage Buffer	Purified polyclonal antibody supplied in PBS with 0.09% (W/V) sodium azide. This antibody is purified through a protein A column, followed by peptide affinity purification.
Note	The product is for research use only,not for use in diagnostic or therapeutic procedures.

# OmnimAbs.com

---

order@Omnimabs.com  
506 N. GARFIELD AVE #210 ALHAMBRA, CA 91801  
This product is for research use only and is not approved for use in humans or in clinical diagnosis. Primary Antibodies are guaranteed for 1 year from date of receipt

---

