



Catalog: OM215278

Scan to get more validated information



# NFE2L2-Y576 Antibody

Catalog: OM215278

☐ 100ug

## Product profile

Product name	NFE2L2-Y576 Antibody
Antibody Type	Primary Antibodies

## Key Feature

Clonality	Polyclonal
Isotype	Ig
Host Species	Rabbit
Tested Applications	WB ,IHC ,FC
Species Reactivity	Human
Concentration	1 mg/ml
Purification	

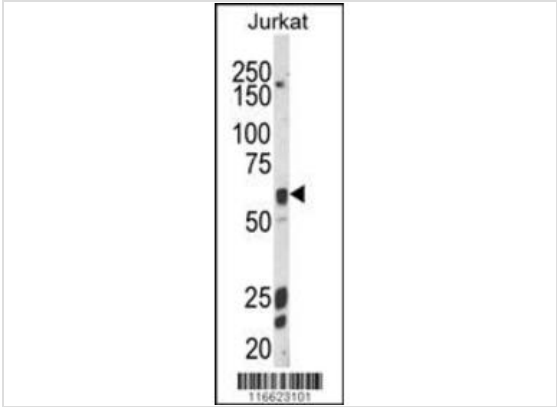
## Target Information

Gene Synonyms	NRF2
Alternative Names	NFE2L2; NRF2; Nuclear factor erythroid 2-related factor 2; HEBP1; Nuclear factor, erythroid derived 2, like 2
Molecular Weight(MW)	67827 Da
Function	Transcription activator that binds to antioxidant response (ARE) elements in the promoter regions of target genes Important for the coordinated up-regulation of genes in response to oxidative stress. May be involved in the transcriptional activation of genes of the beta-globin cluster by mediating enhancer activity of hypersensitive site 2 of the beta-globin locus control region
Tissue Specificity	Widely expressed. Highest expression in adult muscle, kidney, lung, liver and in fetal muscle
Cellular Localization	Cytoplasm, cytosol. Nucleus. Note=Cytosolic under unstressed conditions, translocates into the nucleus upon induction by electrophilic agents

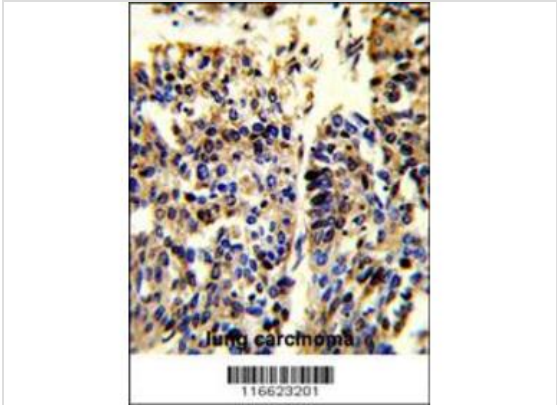
Database Links

Entrez Gene	4780
Nucleotide Accession	NP_006155

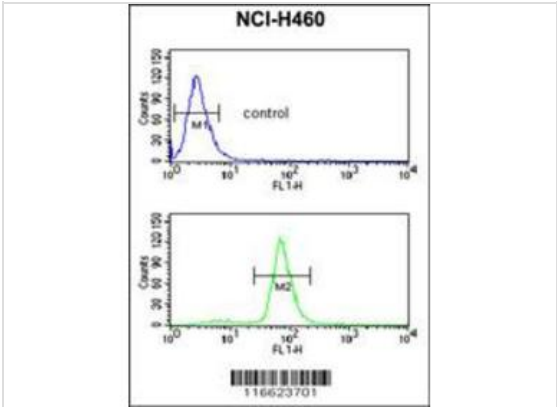
Application



**Application**  
Western blot analysis of Phospho-NFE2L2-Y576 in Jurkat cell line lysates (35ug/lane). NFE2L2 (arrow) was detected using the purified Pab.



**Application**  
Formalin-fixed and paraffin-embedded human lung carcinoma reacted with NFE2L2-Y576 Antibody, which was peroxidase-conjugated to the secondary antibody, followed by DAB staining. This data demonstrates the use of this antibody for immunohistochemistry; clinical relevance has not been evaluated.



**Application**  
NFE2L2-Y576 Antibody flow cytometric analysis of NCI-H460 cells (bottom histogram) compared to a negative control cell (top histogram).FIT C-conjugated goat-anti-rabbit secondary antibodies were used for the analysis.

Application Notes	WB~~1:100~500 IHC~~1:50~100 FC~~1:10~50:
-------------------	--

Additional Information

Form	Liquid
Storage Instructions	For short-term storage, store at 4° C. For long-term storage, aliquot and store at -20°C or below. Avoid multiple freeze-thaw cycles.
Storage Buffer	Purified polyclonal antibody supplied in PBS with 0.09% (W/V) sodium azide. This antibody is purified thro

ugh a protein A column, followed by peptide affinity purification.

**Note**

The product is for research use only, not for use in diagnostic or therapeutic procedures.

# OmnimAbs.com

---

order@Omnimabs.com

506 N. GARFIELD AVE #210 ALHAMBRA, CA 91801

This product is for research use only and is not approved for use in humans or in clinical diagnosis. Primary Antibodies are guaranteed for 1 year from date of receipt

---

