



Catalog: OM215312

Scan to get more validated information



NFKBIL1 Antibody (Center)

Catalog: OM215312

☐ 100ug

Product profile

Product name	NFKBIL1 Antibody (Center)
Antibody Type	Primary Antibodies

Key Feature

Clonality	Polyclonal
Isotype	Ig
Host Species	Rabbit
Tested Applications	WB ,FC ,IF
Species Reactivity	Human
Concentration	1 mg/ml
Purification	

Target Information

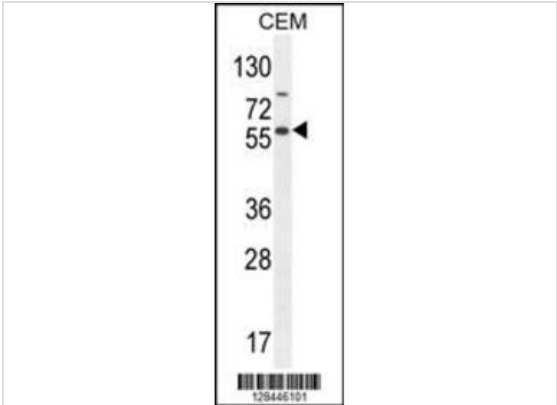
Gene Synonyms	IKBL
Alternative Names	NFKBIL1; IKBL; NF-kappa-B inhibitor-like protein 1; Inhibitor of kappa B-like protein; Nuclear factor of kappa a light polypeptide gene enhancer in B-cells inhibitor-like 1
Molecular Weight(MW)	43204 Da
Function	Involved in the regulation of innate immune response. Acts as negative regulator of Toll-like receptor and interferon- regulatory factor (IRF) signaling pathways. Contributes to the negative regulation of transcriptional activation of NF-kappa-B target genes in response to endogenous proinflammatory stimuli
Tissue Specificity	Detected in different cell types including monocytes, T-cells, B-cells and hepatocytes
Cellular Localization	Nucleus. Note=Nuclear localization with a speckled expression pattern in some cells. Colocalizes with CA CTIN in the nucleus

Database Links

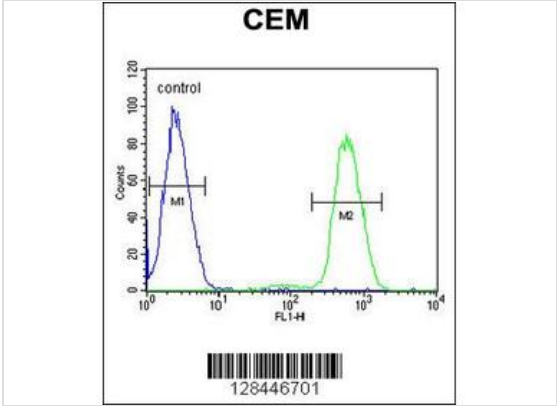
Entrez Gene4795

Nucleotide AccessionNP_001138434.1

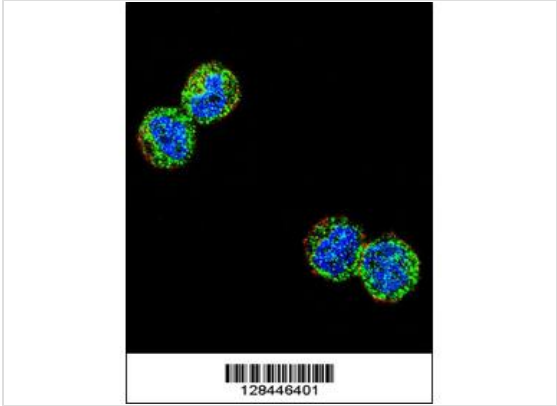
Application



Application
NFKBIL1 Antibody (Center) western blot analysis in CEM cell line lysates (35ug/lane).This demonstrates the NFKBIL1 antibody detected the NFKBIL1 protein (arrow).



Application
NFKBIL1 Antibody (Center) flow cytometric analysis of CEM cells (right histogram) compared to a negative control cell (left histogram).FITC-conjugated goat-anti-rabbit secondary antibodies were used for the analysis.



Application
Confocal immunofluorescent analysis of NFKBIL1 Antibody (Center) (Cat#AP10682c) with MDA-MB435 cell followed by Alexa Fluor 488-conjugated goat anti-rabbit IgG (green).Actin filaments have been labeled with Alexa Fluor 555 phalloidin (red).DAPI was used to stain the cell nuclear (blue).

Application Notes

WB~~1:100~500 FC~~1:10~50 IF~~1:10~50:

Additional Information

Form	Liquid
Storage Instructions	For short-term storage, store at 4° C. For long-term storage, aliquot and store at -20°C or below. Avoid multiple freeze-thaw cycles.
Storage Buffer	Purified polyclonal antibody supplied in PBS with 0.09% (W/V) sodium azide. This antibody is purified through a protein A column, followed by peptide affinity purification.
Note	The product is for research use only,not for use in diagnostic or therapeutic procedures.

OmnimAbs.com

order@Omnimabs.com
506 N. GARFIELD AVE #210 ALHAMBRA, CA 91801
This product is for research use only and is not approved for use in humans or in clinical diagnosis. Primary Antibodies are guaranteed for 1 year from date of receipt

