



Catalog: OM215298

Scan to get more validated information



NFU1 Antibody (C-term)

Catalog: OM215298

☐ 100ug

Product profile

Product name	NFU1 Antibody (C-term)
Antibody Type	Primary Antibodies

Key Feature

Clonality	Polyclonal
Isotype	Ig
Host Species	Rabbit
Tested Applications	WB ,IHC ,FC
Species Reactivity	Human
Concentration	1 mg/ml
Purification	

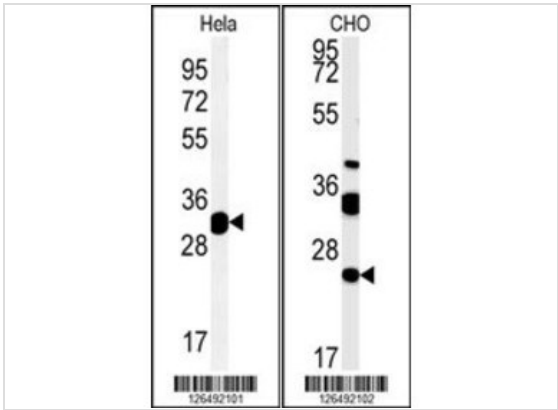
Target Information

Gene Synonyms	HIRIP5
Alternative Names	NFU1; HIRIP5; NFU1 iron-sulfur cluster scaffold homolog, mitochondrial; HIRA-interacting protein 5
Molecular Weight(MW)	28463 Da
Function	Iron-sulfur cluster scaffold protein which can assemble [4Fe-2S] clusters and deliver them to target proteins
Tissue Specificity	Ubiquitous. Expression in adult lung is weak compared to fetal lung
Cellular Localization	Mitochondrion. Cytoplasm, cytosol.

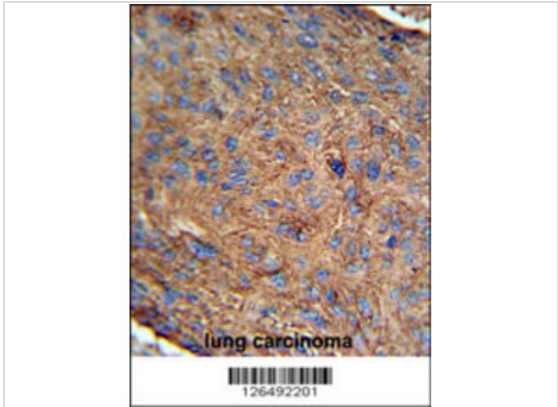
Database Links

Entrez Gene	27247
-------------	-------

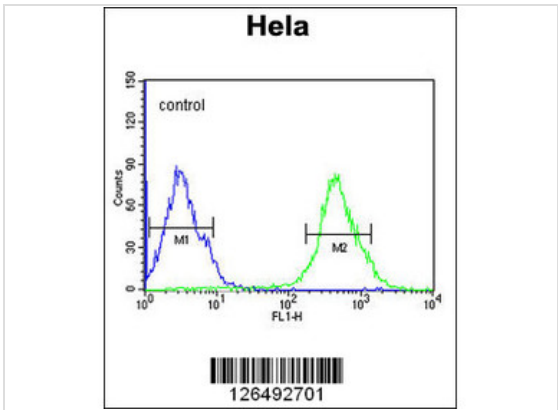
Application



Application
(LEFT)Western blot analysis of NFU1 Antibody (C-term) in HeLa cell line lysates (35ug/lane).NFU1 (arrow) was detected using the purified Pab.(RIGHT)Western blot analysis of NFU1 Antibody (C-term) in CHO cell line lysates (35ug/lane).NFU1 (arrow) was detected using the purified Pab.



Application
NFU1 Antibody (C-term) IHC analysis in formalin fixed and paraffin embedded human lung carcinoma followed by peroxidase conjugation of the secondary antibody and DAB staining. This data demonstrates the use of the NFU1 Antibody (C-term) for immunohistochemistry. Clinical relevance has not been evaluated.



Application
NFU1 Antibody (C-term) flow cytometric analysis of HeLa cells (right histogram) compared to a negative control cell (left histogram).FITC-conjugated goat-anti-rabbit secondary antibodies were used for the analysis.

Application Notes WB~~1:100~500 IHC~~1:50~100 FC~~1:10~50:

Additional Information

Form	Liquid
Storage Instructions	For short-term storage, store at 4° C. For long-term storage, aliquot and store at -20°C or below. Avoid multiple freeze-thaw cycles.
Storage Buffer	Purified polyclonal antibody supplied in PBS with 0.09% (W/V) sodium azide. This antibody is purified through a protein A column, followed by peptide affinity purification.
Note	The product is for research use only,not for use in diagnostic or therapeutic procedures.

order@Omnimabs.com

506 N. GARFIELD AVE #210 ALHAMBRA, CA 91801

This product is for research use only and is not approved for use in humans or in clinical diagnosis. Primary Antibodies are guaranteed for 1 year from date of receipt
