



Catalog: OM215341

Scan to get more validated information



NGLY1 Antibody (N-term)

Catalog: OM215341

☐ 100ug

Product profile

Product name	NGLY1 Antibody (N-term)
Antibody Type	Primary Antibodies

Key Feature

Clonality	Polyclonal
Isotype	Ig
Host Species	Rabbit
Tested Applications	WB ,IHC ,FC
Species Reactivity	Human
Concentration	1 mg/ml
Purification	

Target Information

Gene Synonyms	PNG1
Alternative Names	NGLY1; PNG1; Peptide-N(4)-(N-acetyl-beta-glucosaminyl)asparagine amidase; N-glycanase 1; Peptide:N-glycanase
Molecular Weight(MW)	74390 Da
Function	<p>Specifically deglycosylates the denatured form of N- linked glycoproteins in the cytoplasm and assists their proteasome-mediated degradation. Cleaves the beta-aspartyl- glucosamine (GlcNAc) of the glycan and the amide side chain of Asn, converting Asn to Asp. Prefers proteins containing high- mannose over those bearing complex type oligosaccharides. Can recognize misfolded proteins in the endoplasmic reticulum that are exported to the cytosol to be destroyed and deglycosylate them, while it has no activity towards native proteins. Deglycosylation is a prerequisite for subsequent proteasome-mediated degradation of some, but not all, misfolded glycoproteins</p>
Tissue Specificity	This NGLY1 antibody is generated from rabbits immunized with a KLH conjugated synthetic peptide between 92-122 amino acids from the N-terminal region of human NGLY1.

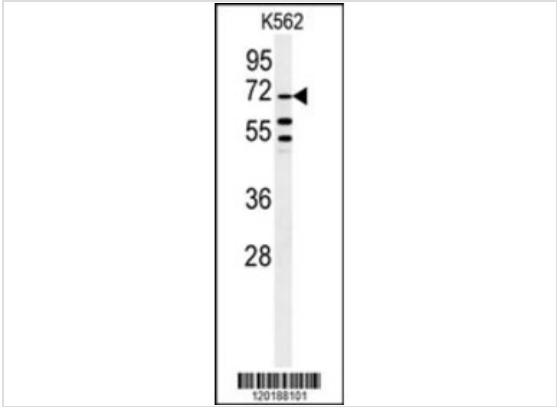
Cellular Localization Cytoplasm.

Database Links

Entrez Gene 55768

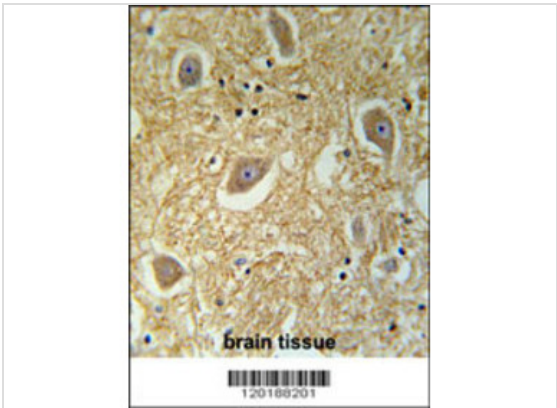
Nucleotide Accession NP_060767

Application



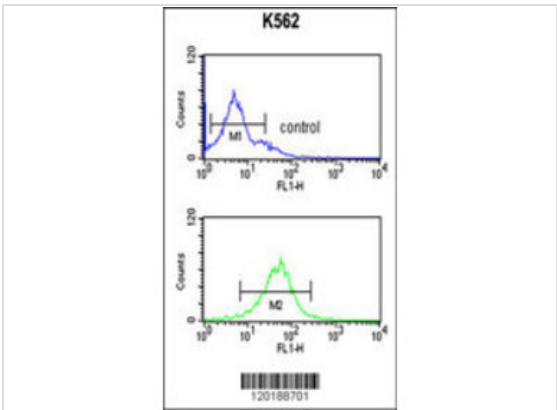
Application

NGLY1 Antibody (N-term) western blot analysis in K562 cell line lysates (35ug/lane).This demonstrates the NGLY1 antibody detected the NGLY1 protein (arrow).



Application

NGLY1 Antibody (N-term) immunohistochemistry analysis in formalin fixed and paraffin embedded human brain tissue followed by peroxidase conjugation of the secondary antibody and DAB staining. This data demonstrates the use of the NGLY1 Antibody (N-term) for immunohistochemistry. Clinical relevance has not been evaluated.



Application

NGLY1 Antibody (N-term) flow cytometric analysis of K562 cells (bottom histogram) compared to a negative control cell (top histogram).FIT C-conjugated goat-anti-rabbit secondary antibodies were used for the analysis.

Application Notes WB~~1:100~500 IHC~~1:50~100 FC~~1:10~50:

Additional Information

Form Liquid

Storage Instructions For short-term storage, store at 4° C. For long-term storage, aliquot and store at -20°C or below. Avoid

multiple freeze-thaw cycles.

Storage Buffer

Purified polyclonal antibody supplied in PBS with 0.09% (W/V) sodium azide. This antibody is purified through a protein A column, followed by peptide affinity purification.

Note

The product is for research use only, not for use in diagnostic or therapeutic procedures.

OmnimAbs.com

order@Omnimabs.com

506 N. GARFIELD AVE #210 ALHAMBRA, CA 91801

This product is for research use only and is not approved for use in humans or in clinical diagnosis. Primary Antibodies are guaranteed for 1 year from date of receipt
