



Catalog: OM215202

Scan to get more validated information



Nephrin (Y1210) antibody

Catalog: OM215202

☐ 100ug

Product profile

Product name	Nephrin (Y1210) antibody
Antibody Type	Primary Antibodies

Key Feature

Clonality	Polyclonal
Isotype	Ig
Host Species	Rabbit
Tested Applications	WB ,FC
Species Reactivity	Human
Concentration	1 mg/ml
Purification	

Target Information

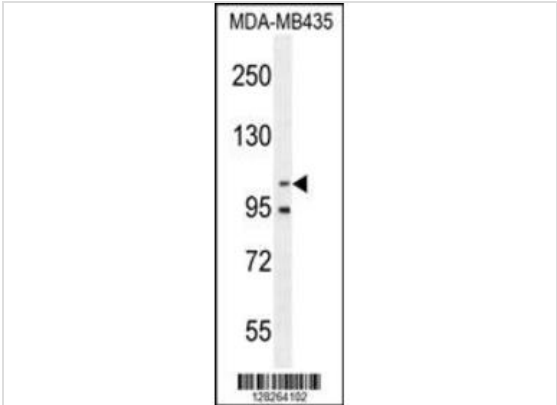
Gene Synonyms	NPHN
Alternative Names	NPHS1; NPHN; Nephrin; Renal glomerulus-specific cell adhesion receptor
Molecular Weight(MW)	134742 Da
Function	Seems to play a role in the development or function of the kidney glomerular filtration barrier. Regulates glomerular vascular permeability. May anchor the podocyte slit diaphragm to the actin cytoskeleton. Plays a role in skeletal muscle formation through regulation of myoblast fusion (By similarity)
Tissue Specificity	Specifically expressed in podocytes of kidney glomeruli
Cellular Localization	Cell membrane; Single-pass type I membrane protein (Potential). Note=Predominantly located at podocyte slit diaphragm between podocyte foot processes. Also associated with podocyte apical plasma membrane

Database Links

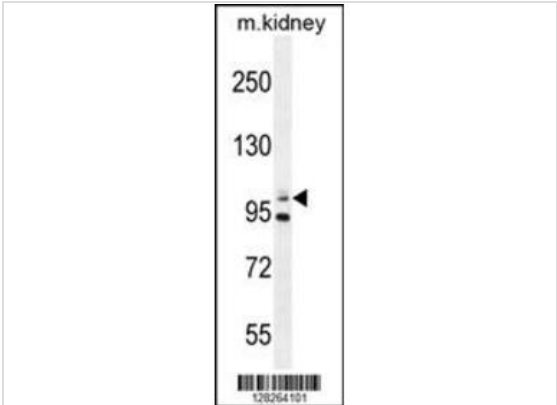
Entrez Gene4868

Nucleotide AccessionNP_004637.1

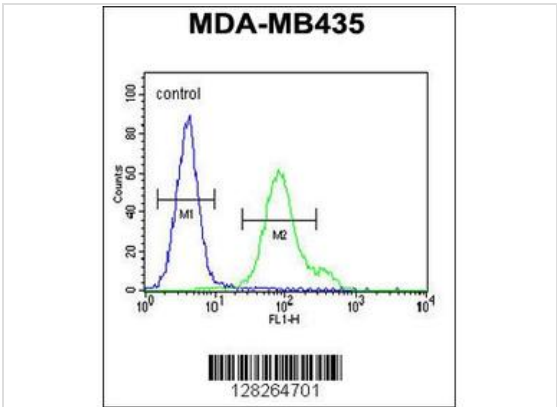
Application



Application
Nephrin (Y1210) antibody western blot analysis in MDA-MB435 cell line lysates (35ug/lane).This demonstrates the Nephrin antibody detected the Nephrin protein (arrow).



Application
Nephrin (Y1210) antibody western blot analysis in mouse kidney tissue lysates (35ug/lane).This demonstrates the Nephrin antibody detected the Nephrin protein (arrow).



Application
Nephrin Antibody (Y1210) flow cytometric analysis of MDA-MB435 cells (right histogram) compared to a negative control cell (left histogram).FIT C-conjugated goat-anti-rabbit secondary antibodies were used for the analysis.

Application Notes

WB~~1:100~500 FC~~1:10~50:

Additional Information

Form	Liquid
Storage Instructions	For short-term storage, store at 4° C. For long-term storage, aliquot and store at -20°C or below. Avoid multiple freeze-thaw cycles.
Storage Buffer	Purified polyclonal antibody supplied in PBS with 0.09% (W/V) sodium azide. This antibody is purified through a protein A column, followed by peptide affinity purification.
Note	The product is for research use only,not for use in diagnostic or therapeutic procedures.

OmnimAbs.com

order@Omnimabs.com

506 N. GARFIELD AVE #210 ALHAMBRA, CA 91801

This product is for research use only and is not approved for use in humans or in clinical diagnosis. Primary Antibodies are guaranteed for 1 year from date of receipt

