



Catalog: OM215196

Scan to get more validated information



Neprilysin Antibody (C-term)

Catalog: OM215196

☐ 100ug

Product profile

Product name	Neprilysin Antibody (C-term)
Antibody Type	Primary Antibodies

Key Feature

Clonality	Polyclonal
Isotype	Ig
Host Species	Rabbit
Tested Applications	WB ,IHC ,FC
Species Reactivity	Human
Concentration	1 mg/ml
Purification	

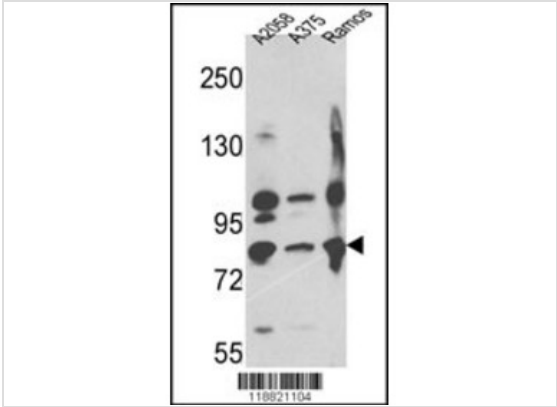
Target Information

Gene Synonyms	EPN
Alternative Names	MME; EPN; Neprilysin; Atriopeptidase; Common acute lymphocytic leukemia antigen; Enkephalinase; Neutral endopeptidase 24.11; Skin fibroblast elastase; CD_antigen=CD10
Molecular Weight(MW)	85514 Da
Function	Thermolysin-like specificity, but is almost confined on acting on polypeptides of up to 30 amino acids. Biologically important in the destruction of opioid peptides such as Met- and Leu-enkephalins by cleavage of a Gly-Phe bond. Able to cleave angiotensin-1, angiotensin-2 and angiotensin 1-9. Involved in the degradation of atrial natriuretic factor (ANF). Displays UV- inducible elastase activity toward skin preelastic and elastic fibers
Tissue Specificity	This Neprilysin antibody is generated from rabbits immunized with a KLH conjugated synthetic peptide between 513~542 amino acids from the C-terminal region of human Neprilysin.
Cellular Localization	Cell membrane; Single-pass type II membrane protein

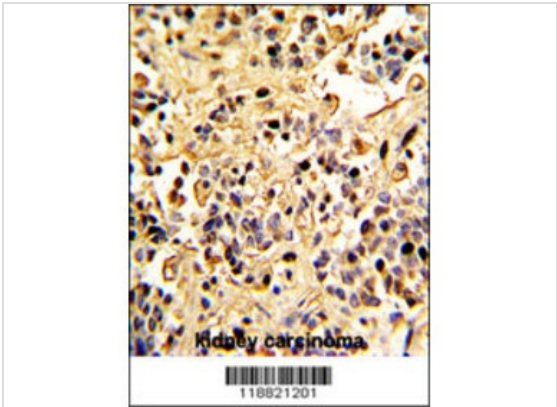
Database Links

Entrez Gene 4311

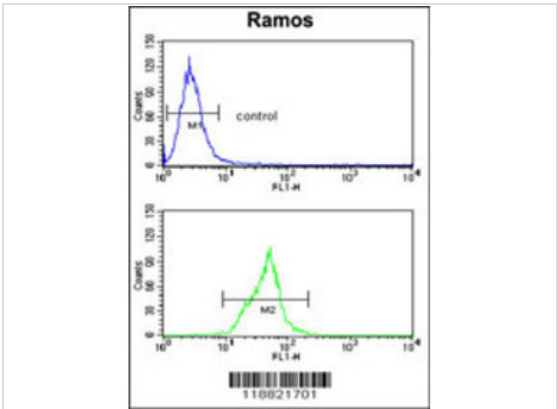
Application



Application
Western blot analysis of Nephrilysin Antibody (C-term) in A2058,A375,Ramos cell line lysates (35ug/lane). EPN (arrow) was detected using the purified Pab.



Application
Formalin-fixed and paraffin-embedded human kidney carcinoma with Nephrilysin Antibody (C-term), which was peroxidase-conjugated to the secondary antibody, followed by DAB staining. This data demonstrates the use of this antibody for immunohistochemistry; clinical relevance has not been evaluated.



Application
Nephrilysin Antibody (C-term) flow cytometry analysis of Ramos cells (bottom histogram) compared to a negative control cell (top histogram).FIT C-conjugated goat-anti-rabbit secondary antibodies were used for the analysis.

Application Notes WB~~1:100~500 IHC~~1:50~100 FC~~1:10~50:

Additional Information

Form	Liquid
Storage Instructions	For short-term storage, store at 4° C. For long-term storage, aliquot and store at -20°C or below. Avoid multiple freeze-thaw cycles.
Storage Buffer	Purified polyclonal antibody supplied in PBS with 0.09% (W/V) sodium azide. This antibody is purified through a protein A column, followed by peptide affinity purification.

Note

The product is for research use only, not for use in diagnostic or therapeutic procedures.

OmnimAbs.com

order@Omnimabs.com

506 N. GARFIELD AVE #210 ALHAMBRA, CA 91801

This product is for research use only and is not approved for use in humans or in clinical diagnosis. Primary Antibodies are guaranteed for 1 year from date of receipt
