



Catalog: OM638988

Scan to get more validated information



Pan Cadherin

Catalog: OM638988

☐ 100 µl

Product profile

Product name	Pan Cadherin
Antibody Type	Primary Antibodies
Product description	The cadherins are a large family of cell adhesion molecules involved in calcium-dependent recognition and adhesion events (1). Synaptic remodeling has been postulated as a mechanism underlying synaptic plasticity, and cadherin adhesion molecules are thought to be a regulator of such a process. Findings suggest that cadherin regulates dendritic spine morphogenesis and related synaptic functions, presumably cooperating with cadherin-independent adhesive mechanisms to maintain spine-axon contacts (2). Human retinoblastoma and normal retinal tissue the type of cadherin, its relationship with cytoplasmic catenins, and its participation in invasion has been examined. Retinoblastoma cells, in contrast with normal retina, express a cadherin-2/catenin complex that is irregularly distributed and weakly linked to the cytoskeleton. In retinoblastoma, this complex acts as an invasion promoter (3).
Immunogen	peptide

Key Feature

Clonality	Polyclonal
Isotype	IgG
Host Species	Rabbit
Tested Applications	WB ,ICC ,IHC ,FC ,IP
Species Reactivity	Human Mouse Rat
Concentration	1 mg/mL.

Target Information

Alternative Names	Cadherin antibody CDH3 antibody CDHP antibody 7B4 antigen antibody Cadherin-1 antibody Cadherin-2 antibody Cadherin-3 antibody Cadherin-4 antibody Cadherin-5 antibody CAM 120/80 antibody CD144 antibody CD324 antibody CD325 antibody Cdh4 antibody CDH5 antibody CDHE antibody CDHN antibody E-cadherin antibody Epithelial cadherin antibody N-cadherin antibody NCAD antibody Neural cadherin antibody P-cadherin antibody Placental cadherin antibody UVO antibody Uvomorulin antibody Vascular endot
-------------------	---

helial cadherin antibody

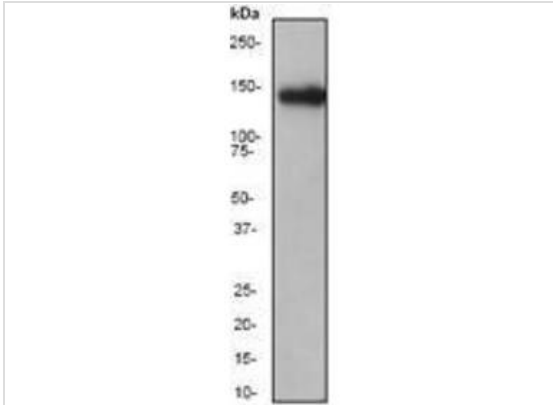
Molecular Weight(MW) 140kDa

Cellular Localization Cytoplasm, Cell junction

Database Links

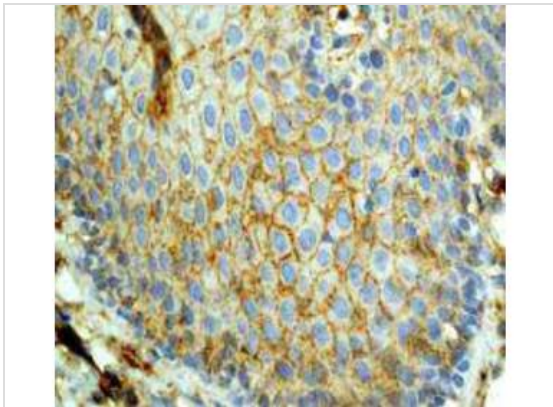
SwissProt ID P19022

Application



Application

Fig1: Western blot analysis on C6 cell lysate using anti-Pan-Cadherin.



Application

Fig2□ Immunohistochemical staining of paraffin-embedded human cervical carcinoma tissue using anti-Pan-Cadherin.

Positive Control C6, human cervical carcinoma tissue.

Application Notes **WB:**1:1,000

ICC:1:100

IHC:1:100

IP:1:40

FC:1:30

Additional Information

Form Liquid

Storage Instructions Store at -20 °C. Stable for 12 months from date of receipt

Storage Buffer 1*TBS (pH7.4), 0.5%BSA, 40%Glycerol. Preservative: 0.05% Sodium Azide.

Note The product is for research use only,not for use in diagnostic or therapeutic procedures.

OmnimAbs.com

order@Omnimabs.com
506 N. GARFIELD AVE #210 ALHAMBRA, CA 91801
This product is for research use only and is not approved for use in humans or in clinical diagnosis. Primary Antibodies are guaranteed for 1 year from date of receipt
