



Catalog: OM218762

Scan to get more validated information



Protein-C Tag Antibody

Catalog: OM218762

☐ 100ug

Product profile

Product name	Protein-C Tag Antibody
Antibody Type	Tags Antibodies

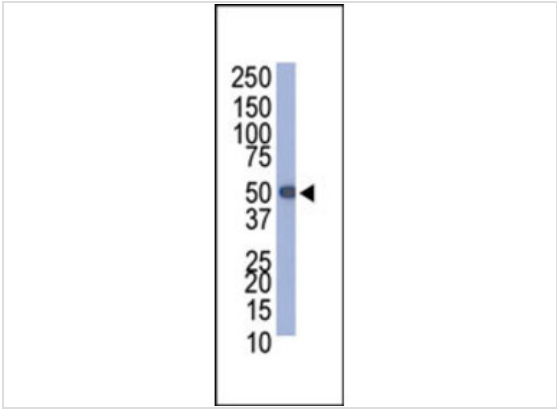
Key Feature

Clonality	Polyclonal
Isotype	Ig
Host Species	Rabbit
Tested Applications	WB
Species Reactivity	Human
Concentration	1 mg/ml
Purification	

Target Information

Molecular Weight(MW)	Da
Tissue Specificity	KLH conjugated synthetic peptide encoding the Protein-C epitope tag (CEDQVDPRLIDGK) was used as a ntigen.

Application



Application
Western blot analysis of anti-Protein-C tag Pab in Protein-C-tagged recombinant protein bacterial lysate.

Application Notes **WB~~1:50~100:**

Additional Information

Form	Liquid
Storage Instructions	For short-term storage, store at 4° C. For long-term storage, aliquot and store at -20°C or below. Avoid multiple freeze-thaw cycles.
Storage Buffer	Purified polyclonal antibody supplied in PBS with 0.09% (W/V) sodium azide. This antibody is purified through a protein G column, eluted with high and low pH buffers and neutralized immediately, followed by dialysis against PBS.
Note	The product is for research use only,not for use in diagnostic or therapeutic procedures.

OmnimAbs.com

order@Omnimabs.com
506 N. GARFIELD AVE #210 ALHAMBRA, CA 91801
This product is for research use only and is not approved for use in humans or in clinical diagnosis. Primary Antibodies are guaranteed for 1 year from date of receipt