



Catalog: OM289613

Scan to get more validated information



RBM10 Antibody

Catalog: OM289613

☐ 100ug

Product profile

Product name	RBM10 Antibody
Antibody Type	Primary Antibodies
Product description	RBM10 contains RNA recognition motif found in a variety of RNA binding proteins, including various hnR NP proteins, proteins implicated in regulation of alternative splicing, and protein components of snRNPs. In vitro studies showed that the rat homolog bound to RNA homopolymers, with a preference for G and U polyribonucleotides. This gene is part of a gene cluster on chromosome Xp11.23, and its 3' end lies within 20 kb upstream of UBE1.1) Thiselton, D.L., et al., (2002) Genomics 79 (4), 560-572.
Immunogen	Antibody produced in rabbits immunized with a synthetic peptide corresponding a region of human RBM10.

Key Feature

Clonality	Polyclonal
Host Species	Rabbit
Tested Applications	ELISA ,IHC ,WB
Species Reactivity	Dog Human
Concentration	1 mg/ml
Purification	Protein A

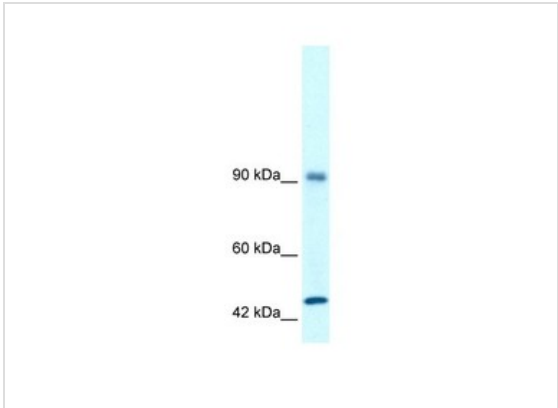
Target Information

Gene Symbol	RBM10
Alternative Names	RBM10, S1-1, TARPS, GPATC9, ZRANB5, GPATCH9, DXS8237E
Molecular Weight(MW)	104 kDa

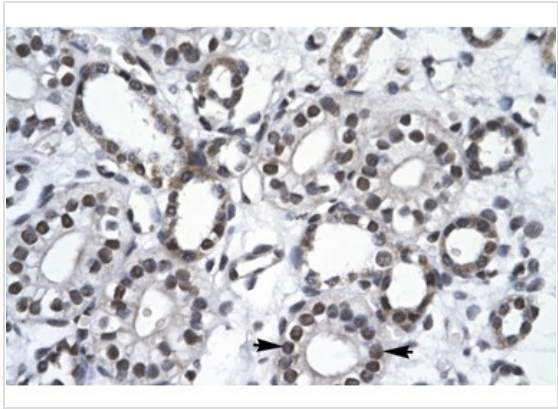
Database Links

Entrez Gene	8241
-------------	------

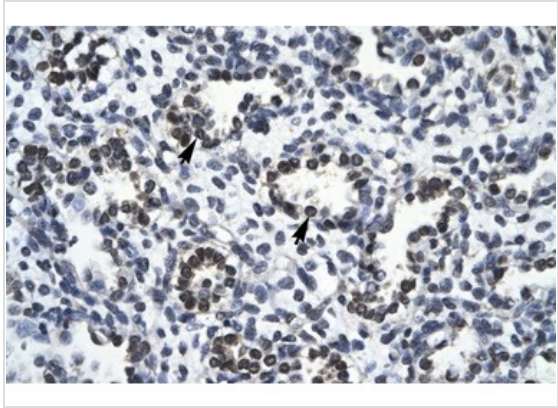
Application



Application
Antibody used in WB on Human Daudi cells at 1.4 ug/ml.



Application
Antibody used in IHC on Human kidney at 4.0-8.0 ug/ml.



Application
Antibody used in IHC on Human Lung at 4.0-8.0 ug/ml.

Positive Control 1) Cat. No. 1224 - Daudi Cell Lysate

Application Notes RBM10 antibody can be used for detection of RBM10 by ELISA at 1:62500. RBM10 antibody can be used for detection of RBM10 by western blot at 1.4 µg/mL, and HRP conjugated secondary antibody should be diluted 1:50,000 - 100,000.:

Additional Information

Form	Liquid
Storage Instructions	For short periods of storage (days) store at 4 °C. For longer periods of storage, store RBM10 antibody at -20°C. As with any antibody avoid repeat freeze-thaw cycles.
Storage Buffer	IgG in phosphate buffered saline , pH 7.4, 150mM NaCl, 0.02% sodium azide and 50% glycerol.Store at -2

0 °C.Stable for 12 months from date of receipt

Note

The product is for research use only,not for use in diagnostic or therapeutic procedures.

OmnimAbs.com

order@Omnimabs.com

506 N. GARFIELD AVE #210 ALHAMBRA, CA 91801

This product is for research use only and is not approved for use in humans or in clinical diagnosis. Primary Antibodies are guaranteed for 1 year from date of receipt

