



Catalog: OM289614

Scan to get more validated information



RBM10 Antibody

Catalog: OM289614

☐ 100ug

Product profile

| | |
|---------------------|--|
| Product name | RBM10 Antibody |
| Antibody Type | Primary Antibodies |
| Product description | RBM10 contains RNA recognition motif found in a variety of RNA binding proteins, including various hnRNP proteins, proteins implicated in regulation of alternative splicing, and protein components of snRNPs. In vitro studies showed that the rat homolog bound to RNA homopolymers, with a preference for G and U polyribonucleotides. This gene is part of a gene cluster on chromosome Xp11.23, and its 3' end lies within 20 kb upstream of UBE1.1) Thiselton, D.L., et al., (2002) Genomics 79 (4), 560-572. |
| Immunogen | Antibody produced in rabbits immunized with a synthetic peptide corresponding a region of human RBM10. |

Key Feature

| | |
|---------------------|----------------|
| Clonality | Polyclonal |
| Host Species | Rabbit |
| Tested Applications | ELISA ,IHC ,WB |
| Species Reactivity | Human Mouse |
| Concentration | 1 mg/ml |
| Purification | Protein A |

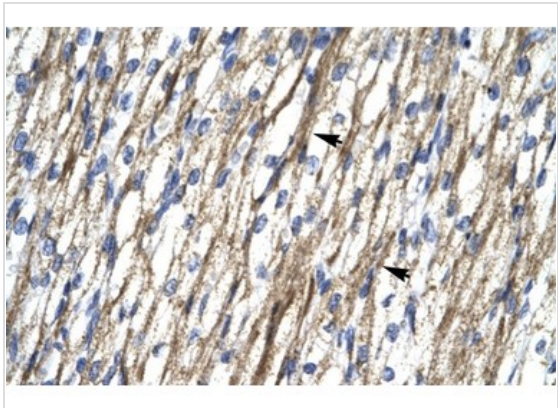
Target Information

| | |
|----------------------|---|
| Gene Symbol | RBM10 |
| Alternative Names | RBM10, S1-1, TARPS, GPATC9, ZRANB5, GPATCH9, DXS8237E |
| Molecular Weight(MW) | 104 kDa |

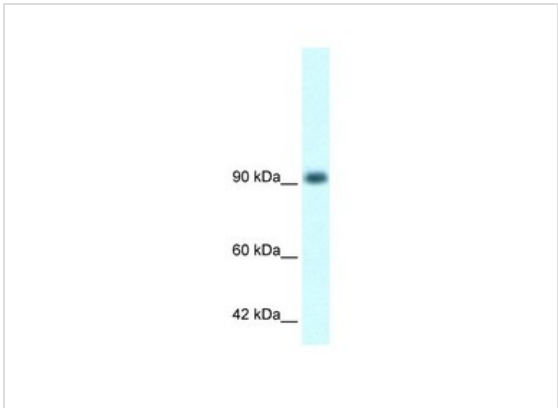
Database Links

| | |
|-------------|------|
| Entrez Gene | 8241 |
|-------------|------|

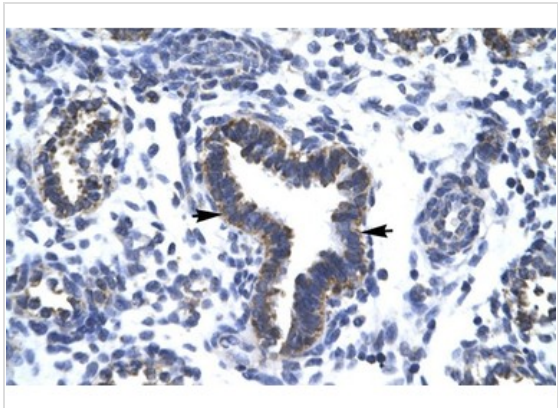
Application



Application
Antibody used in IHC on Human Heart at 4.0-8.0 ug/ml.



Application
Antibody used in WB on Human Daudi cells at 1.4 ug/ml.



Application
Antibody used in IHC on Human Lung at 4.0-8.0 ug/ml.

| | |
|-------------------|--|
| Positive Control | 1) Cat. No. 1224 - Daudi Cell Lysate |
| Application Notes | RBM10 antibody can be used for detection of RBM10 by ELISA at 1:1562500. RBM10 antibody can be used for detection of RBM10 by western blot at 1.4 µg/mL, and HRP conjugated secondary anti body should be diluted 1:50,000 - 100,000.: |

Additional Information

| | |
|----------------------|---|
| Form | Liquid |
| Storage Instructions | For short periods of storage (days) store at 4 °C. For longer periods of storage, store RBM10 antibody at -20 °C. As with any antibody avoid repeat freeze-thaw cycles. |
| Storage Buffer | IgG in phosphate buffered saline , pH 7.4, 150mM NaCl, 0.02% sodium azide and 50% glycerol.Store at -2 |

0 °C.Stable for 12 months from date of receipt

Note

The product is for research use only,not for use in diagnostic or therapeutic procedures.

OmnimAbs.com

order@Omnimabs.com

506 N. GARFIELD AVE #210 ALHAMBRA, CA 91801

This product is for research use only and is not approved for use in humans or in clinical diagnosis. Primary Antibodies are guaranteed for 1 year from date of receipt
