



Catalog: OM105149

Scan to get more validated information



Rabbit anti-AREG polyclonal antibody - middle region

Catalog: OM105149

☐ 100ug

Product profile

Product name	Rabbit anti-AREG polyclonal antibody - middle region
Antibody Type	Primary Antibodies
Immunogen	The immunogen for anti-AREG antibody: synthetic peptide directed towards the middle region of human AREG

Key Feature

Clonality	Polyclonal
Isotype	IgG
Host Species	Rabbit
Tested Applications	WB
Species Reactivity	Bovine Dog Human Pig
Concentration	1 mg/ml
Purification	Affinity purified

Target Information

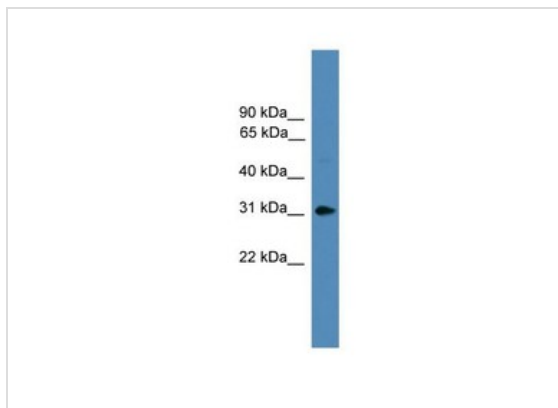
Gene Symbol	AREG
Gene Synonyms	AR; AREGB; CRDGF; MGC13647; SDGF
Gene Full Name	Amphiregulin
Gene Summary	The protein encoded by this gene is a member of the epidermal growth factor family. It is an autocrine growth factor as well as a mitogen for astrocytes, Schwann cells, and fibroblasts. It is related to epidermal growth factor (EGF) and transforming growth factor alpha (TGF-alpha). This protein interacts with the EGF/TGF-alpha receptor to promote the growth of normal epithelial cells and inhibits the growth of certain aggressive carcinoma cell lines. This encoded protein is associated with a psoriasis-like skin phenotype.
Alternative Names	AR, AREGB, CRDGF, MGC13647, SDGF
Molecular Weight(MW)	28kDa

Sequence 252 amino acids

Database Links

Entrez Gene	374
SwissProt ID	P15514
Protein Accession	NP_001648

Application



Western blot
0.2-1 ug/ml
ELISA Titer: 1:62500
Positive Control: ACHN cell lysate

Application Notes **WB:**1:500~1:2000
Notes:Optimal dilutions/concentrations should be determined by the researcher.

Additional Information

Form	Liquid
Storage Instructions	Aliquot and store at -20°C. Avoid repeated freeze / thaw cycles
Storage Buffer	phosphate buffered saline , pH 7.4, 150mM NaCl, 0.02% sodium azide and 50% glycerol.
Note	The product is for research use only,not for use in diagnostic or therapeutic procedures.

OmnimAbs.com

order@Omnimabs.com

506 N. GARFIELD AVE #210 ALHAMBRA, CA 91801

This product is for research use only and is not approved for use in humans or in clinical diagnosis. Primary Antibodies are guaranteed for 1 year from date of receipt