



Catalog: OM105592

Scan to get more validated information



# Rabbit anti-ASCL2 polyclonal antibody - middle region

Catalog: OM105592

☐ 100ug

## Product profile

Product name	Rabbit anti-ASCL2 polyclonal antibody - middle region
Antibody Type	Primary Antibodies
Immunogen	The immunogen for anti-ASCL2 antibody: synthetic peptide directed towards the middle region of human ASCL2

## Key Feature

Clonality	Polyclonal
Isotype	IgG
Host Species	Rabbit
Tested Applications	WB
Species Reactivity	Bovine Dog Guinea Pig Human Mouse Pig Rat
Concentration	1 mg/ml
Purification	Affinity purified

## Target Information

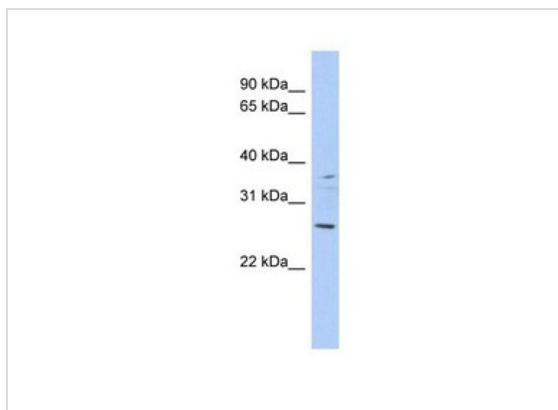
Gene Symbol	ASCL2
Gene Synonyms	ASH2; HASH2; MASH2; bHLHa45
Gene Full Name	Achaete-scute complex homolog 2 (Drosophila)
Gene Summary	AS-C proteins are involved in the determination of the neuronal precursors in the peripheral nervous system and the central nervous system. This gene is a member of the basic helix-loop-helix (BHLH) family of transcription factors. It activates transcription by binding to the E box (5'-CANNTG-3'). Dimerization with other BHLH proteins is required for efficient DNA binding. Involved in the determination of the neuronal precursors in the peripheral nervous system and the central nervous system. PRIMARYREFSEQ_SPAN PRIMARY_IDENTIFIER PRIMARY_SPAN COMP 1-1649 BC028140.1 1-1649 1650-1864 BC057801.1 1286-1500
Alternative Names	ASH2, HASH2, MASH2, bHLHa45

<b>Molecular Weight(MW)</b>	20kDa
<b>Sequence</b>	193 amino acids

## Database Links

<b>Entrez Gene</b>	430
<b>SwissProt ID</b>	Q99929
<b>Protein Accession</b>	NP_005161

## Application



**Western blot**  
0.2-1 ug/ml  
ELISA Titer: 1:312500  
Positive Control: DU145 cell lysate

<b>Application Notes</b>	<b>WB:</b> 1:500~1:2000 <b>Notes:</b> Optimal dilutions/concentrations should be determined by the researcher.
--------------------------	---

## Additional Information

<b>Form</b>	Liquid
<b>Storage Instructions</b>	Aliquot and store at -20°C. Avoid repeated freeze / thaw cycles
<b>Storage Buffer</b>	phosphate buffered saline , pH 7.4, 150mM NaCl, 0.02% sodium azide and 50% glycerol.
<b>Note</b>	The product is for research use only,not for use in diagnostic or therapeutic procedures.

# OmnimAbs.com

order@Omnimabs.com  
506 N. GARFIELD AVE #210 ALHAMBRA, CA 91801

This product is for research use only and is not approved for use in humans or in clinical diagnosis. Primary Antibodies are guaranteed for 1 year from date of receipt