



Catalog: OM105591

Scan to get more validated information



Rabbit anti-Aff1 polyclonal antibody - N-terminal region

Catalog: OM105591

☐ 100ug

Product profile

Product name	Rabbit anti-Aff1 polyclonal antibody - N-terminal region
Antibody Type	Primary Antibodies
Immunogen	The immunogen for anti-Aff1 antibody: synthetic peptide corresponding to a region of Mouse

Key Feature

Clonality	Polyclonal
Isotype	IgG
Host Species	Rabbit
Tested Applications	WB
Species Reactivity	Bovine Dog Horse Human Mouse Pig Rabbit Rat
Concentration	1 mg/ml
Purification	Affinity purified

Target Information

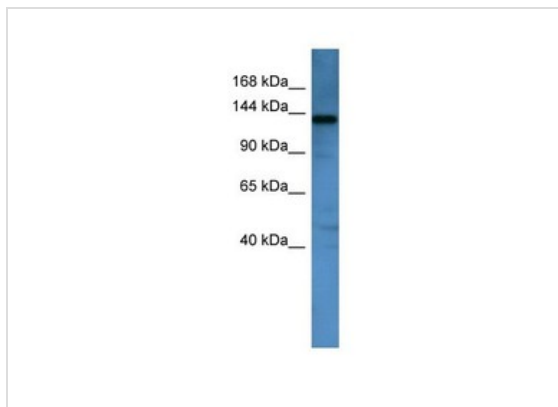
Gene Symbol	Aff1
Gene Synonyms	9630032B01Rik; AW319193; Af4; Mlt2h; Rob
Gene Full Name	AF4/FMR2 family, member 1
Gene Summary	The function of Aff1 remains unknown.
Alternative Names	9630032B01Rik, AW319193, Af4, Mlt2h, Rob
Molecular Weight(MW)	132kDa
Sequence	1218 amino acids

Database Links

Entrez Gene	17355
-------------	-------

Protein Accession NP_598680

Application



Western blot
0.2-1 ug/ml
ELISA Titer: 1:62500
Positive Control: Mouse Kidney

Application Notes **WB:**1:500~1:2000
Notes:Optimal dilutions/concentrations should be determined by the researcher.

Additional Information

Form Liquid

Storage Instructions Aliquot and store at -20°C. Avoid repeated freeze / thaw cycles

Storage Buffer phosphate buffered saline , pH 7.4, 150mM NaCl, 0.02% sodium azide and 50% glycerol.

Note The product is for research use only,not for use in diagnostic or therapeutic procedures.

OmnimAbs.com

order@Omnimabs.com
506 N. GARFIELD AVE #210 ALHAMBRA, CA 91801

This product is for research use only and is not approved for use in humans or in clinical diagnosis. Primary Antibodies are guaranteed for 1 year from date of receipt