



Catalog: OM107997

Scan to get more validated information



Rabbit anti-Arntl Antibody - C-terminal region

Catalog: OM107997

☐ 100ug

Product profile

Product name	Rabbit anti-Arntl Antibody - C-terminal region
Antibody Type	Primary Antibodies
Immunogen	The immunogen for Anti-Arntl antibody is: synthetic peptide directed towards the C-terminal region of Mouse Arntl

Key Feature

Clonality	Polyclonal
Isotype	IgG
Host Species	Rabbit
Tested Applications	WB
Species Reactivity	Mouse Human
Concentration	1 mg/ml
Purification	Affinity purified

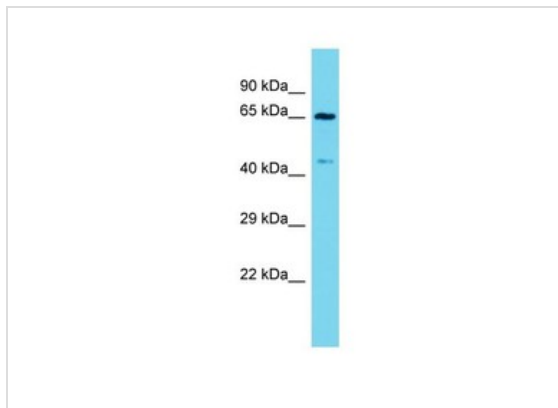
Target Information

Gene Symbol	Arntl
Gene Synonyms	Arnt3; BMAL1b; Bmal1; MOP3; bHLHe5; bmal1b'
Gene Full Name	aryl hydrocarbon receptor nuclear translocator-like
Gene Summary	The function of this protein remains unknown.
Alternative Names	Arnt3, BMAL1b, Bmal1, MOP3, bHLHe5, bmal1b'
Molecular Weight(MW)	69kDa
Sequence	626 amino acids

Database Links

Entrez Gene	11865
SwissProt ID	Q3UHZ2
Protein Accession	NP_031515

Application



Western blot
 Host: Rabbit
 Target Name: Arntl
 Sample Tissue: Mouse Stomach lysates
 Antibody Dilution: 1.0ug/ml

Application Notes **WB:**1:500~1:2000
Notes:Optimal dilutions/concentrations should be determined by the researcher.

Additional Information

Form Liquid

Storage Instructions Aliquot and store at -20°C. Avoid repeated freeze / thaw cycles

Storage Buffer phosphate buffered saline , pH 7.4, 150mM NaCl, 0.02% sodium azide and 50% glycerol.

Note The product is for research use only,not for use in diagnostic or therapeutic procedures.

OmnimAbs.com

order@Omnimabs.com

506 N. GARFIELD AVE #210 ALHAMBRA, CA 91801

This product is for research use only and is not approved for use in humans or in clinical diagnosis. Primary Antibodies are guaranteed for 1 year from date of receipt