



Catalog: OM105155

Scan to get more validated information



# Rabbit anti-BAD polyclonal antibody - middle region

Catalog: OM105155

☐ 100ug

## Product profile

Product name	Rabbit anti-BAD polyclonal antibody - middle region
Antibody Type	Primary Antibodies

## Key Feature

Clonality	Polyclonal
Isotype	IgG
Host Species	Rabbit
Tested Applications	WB
Species Reactivity	Bovine Guinea Pig Horse Human Mouse Rabbit Rat
Concentration	1 mg/ml
Purification	Affinity purified

## Target Information

Gene Symbol	BAD
Gene Synonyms	BBC2; BCL2L8
Gene Full Name	BCL2-associated agonist of cell death
Gene Summary	<p>The protein encoded by this gene is a member of the BCL-2 family. BCL-2 family members are known to be regulators of programmed cell death. This protein positively regulates cell apoptosis by forming heterodimers with BCL-xL and BCL-2, and reversing their death repressor activity. Proapoptotic activity of this protein is regulated through its phosphorylation. Protein kinases AKT and MAP kinase, as well as protein phosphatase calcineurin were found to be involved in the regulation of this protein. Alternative splicing of this gene results in two transcript variants which encode the same isoform.</p>
Alternative Names	BBC2, BCL2L8
Molecular Weight(MW)	18kDa
Sequence	168 amino acids

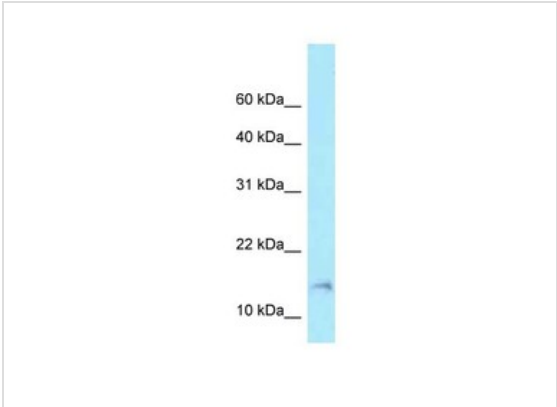
## Database Links

---

Entrez Gene	572
SwissProt ID	Q92934
Protein Accession	NP_004313

## Application

---



**Western blot**  
Titration: 1.0 ug/ml  
Positive Control: 721\_B Whole Cell

Application Notes	<b>WB:</b> 1:500~1:2000 <b>Notes:</b> Optimal dilutions/concentrations should be determined by the researcher.
-------------------	---

## Additional Information

---

Form	Liquid
Storage Instructions	Aliquot and store at -20°C. Avoid repeated freeze / thaw cycles
Storage Buffer	phosphate buffered saline , pH 7.4, 150mM NaCl, 0.02% sodium azide and 50% glycerol.
Note	The product is for research use only,not for use in diagnostic or therapeutic procedures.

# OmnimAbs.com

---

order@Omnimabs.com  
506 N. GARFIELD AVE #210 ALHAMBRA, CA 91801  
This product is for research use only and is not approved for use in humans or in clinical diagnosis. Primary Antibodies are guaranteed for 1 year from date of receipt

