



Catalog: OM105570

Scan to get more validated information



Rabbit anti-BARHL2 polyclonal antibody - middle region

Catalog: OM105570

☐ 100ug

Product profile

| | |
|---------------|--|
| Product name | Rabbit anti-BARHL2 polyclonal antibody - middle region |
| Antibody Type | Primary Antibodies |
| Immunogen | The immunogen for anti-BARHL2 antibody: synthetic peptide directed towards the middle region of human BARHL2 |

Key Feature

| | |
|---------------------|--|
| Clonality | Polyclonal |
| Isotype | IgG |
| Host Species | Rabbit |
| Tested Applications | WB ,IHC |
| Species Reactivity | Bovine Dog Guinea Pig Mouse Pig Rabbit |
| Concentration | 1 mg/ml |
| Purification | Affinity purified |

Target Information

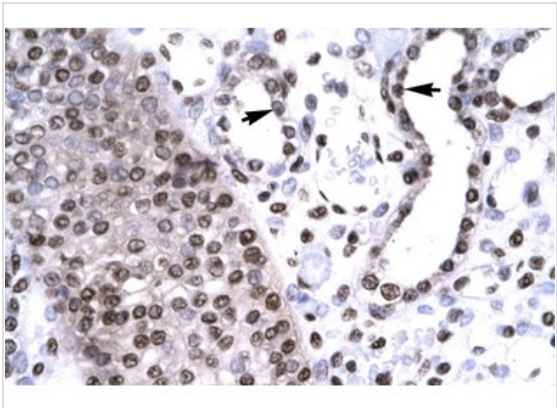
| | |
|----------------------|--|
| Gene Symbol | BARHL2 |
| Gene Full Name | BarH-like homeobox 2 |
| Gene Summary | BARHL2 and BARHL1 are two homeobox genes in mouse and human, which are highly related to the Bar Drosophila genes. |
| Molecular Weight(MW) | 42kDa |
| Sequence | 387 amino acids |

Database Links

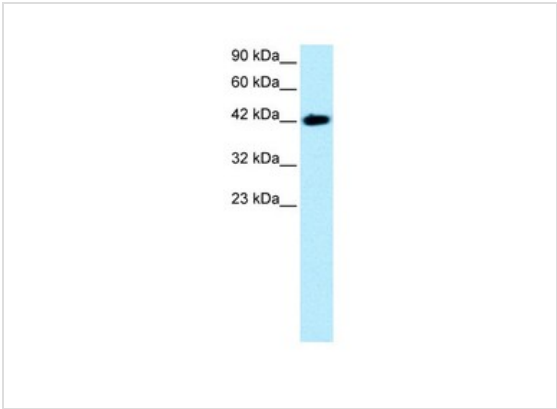
| | |
|-------------|--------|
| Entrez Gene | 343472 |
|-------------|--------|

| | |
|-------------------|-----------|
| SwissProt ID | Q9NY43 |
| Protein Accession | NP_064447 |

Application



Western blot



Western blot
0.05-2.0ug/ml
Positive Control: HepG2 cell lysate

| | |
|-------------------|--|
| Application Notes | WB: 1:500~1:2000 |
| | IHC: 1:50~1:200 |
| | Notes: Optimal dilutions/concentrations should be determined by the researcher. |

Additional Information

| | |
|----------------------|---|
| Form | Liquid |
| Storage Instructions | Aliquot and store at -20°C. Avoid repeated freeze / thaw cycles |
| Storage Buffer | phosphate buffered saline , pH 7.4, 150mM NaCl, 0.02% sodium azide and 50% glycerol. |
| Note | The product is for research use only,not for use in diagnostic or therapeutic procedures. |

OmnimAbs.com

order@Omnimabs.com
 506 N. GARFIELD AVE #210 ALHAMBRA, CA 91801
 This product is for research use only and is not approved for use in humans or in clinical diagnosis. Primary Antibodies are guaranteed for 1 year from date of receipt