



Catalog: OM105138

Scan to get more validated information



Rabbit anti-C1ORF25 polyclonal antibody - N-terminal region

Catalog: OM105138

☐ 100ug

Product profile

Product name	Rabbit anti-C1ORF25 polyclonal antibody - N-terminal region
Antibody Type	Primary Antibodies
Immunogen	The immunogen for anti-C1ORF25 antibody: synthetic peptide directed towards the N terminal of human C1ORF25

Key Feature

Clonality	Polyclonal
Isotype	IgG
Host Species	Rabbit
Tested Applications	WB
Species Reactivity	Bovine Human Mouse Rat
Concentration	1 mg/ml
Purification	Affinity purified

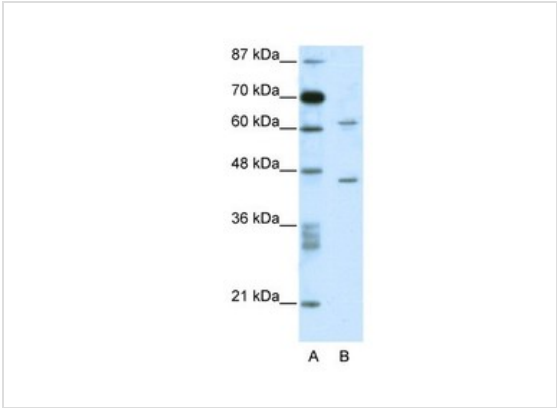
Target Information

Gene Symbol	C1ORF25
Gene Synonyms	TRM1L; MST070; C1orf25; MSTP070; bG120K12.3
Gene Full Name	TRM1 tRNA methyltransferase 1-like
Gene Summary	Although C1orf25 is similar to N2,N2-dimethylguanosine tRNA methyltransferase from other organisms, the true function of C1orf25 protein is not known.
Alternative Names	TRM1L, MST070, C1orf25, MSTP070, bG120K12.3
Molecular Weight(MW)	61kDa
Sequence	546 amino acids

Database Links

Entrez Gene	81627
SwissProt ID	Q5XKG7
Protein Accession	AAH26883

Application



Western blot
0.2-1 ug/ml
ELISA Titer: 1:312500
Positive Control: Jurkat cell lysate

Application Notes	WB:1:500~1:2000 Notes: Optimal dilutions/concentrations should be determined by the researcher.
-------------------	---

Additional Information

Form	Liquid
Storage Instructions	Aliquot and store at -20°C. Avoid repeated freeze / thaw cycles
Storage Buffer	phosphate buffered saline , pH 7.4, 150mM NaCl, 0.02% sodium azide and 50% glycerol.
Note	The product is for research use only,not for use in diagnostic or therapeutic procedures.

OmnimAbs.com

order@Omnimabs.com
506 N. GARFIELD AVE #210 ALHAMBRA, CA 91801
This product is for research use only and is not approved for use in humans or in clinical diagnosis. Primary Antibodies are guaranteed for 1 year from date of receipt