



Catalog: OM105102

Scan to get more validated information



Rabbit anti-C20ORF100 polyclonal antibody - N-terminal region

Catalog: OM105102

☐ 100ug

Product profile

| | |
|---------------|---|
| Product name | Rabbit anti-C20ORF100 polyclonal antibody - N-terminal region |
| Antibody Type | Primary Antibodies |
| Immunogen | The immunogen for anti-C20ORF100 antibody: synthetic peptide directed towards the N terminal of human C20ORF100 |

Key Feature

| | |
|---------------------|-------------------|
| Clonality | Polyclonal |
| Isotype | IgG |
| Host Species | Rabbit |
| Tested Applications | WB ,IHC |
| Species Reactivity | Human Mouse Rat |
| Concentration | 1 mg/ml |
| Purification | Affinity purified |

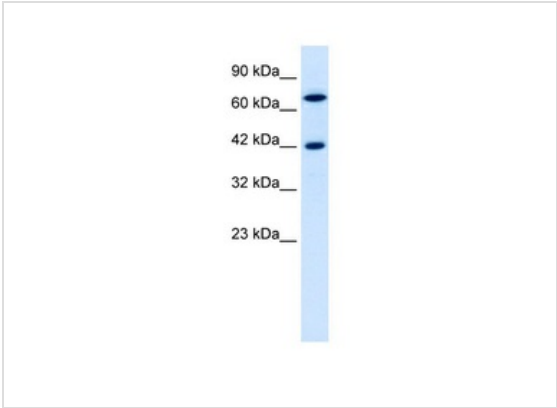
Target Information

| | |
|----------------------|--|
| Gene Symbol | C20ORF100 |
| Gene Synonyms | TOX2 |
| Gene Full Name | TOX high mobility group box family member 2 |
| Gene Summary | This gene, which is located on chromosome 20, is predicted to encode for a signal protein with unknown function. |
| Alternative Names | GCX-1, C20orf100, dJ495O3.1, dJ1108D11.2 |
| Molecular Weight(MW) | 49kDa |
| Sequence | 464 amino acids |

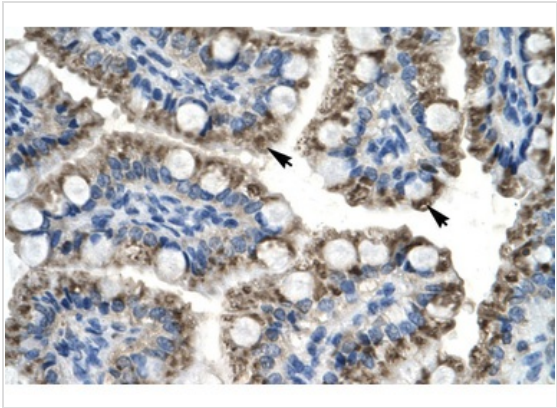
Database Links

| | |
|-------------------|-----------|
| Entrez Gene | 84969 |
| SwissProt ID | Q96NM4 |
| Protein Accession | NP_116272 |

Application



Application
WB Suggested Anti-C20ORF100 Antibody Titration: 0.2-1 ug/ml
ELISA Titer: 1:312500
Positive Control: Jurkat cell lysate



Application
Rabbit Anti-C20orf100 Antibody
Catalog Number: ARP30008
Paraffin Embedded Tissue: Human Intestine
Cellular Data: Epithelial cells of intestinal villas
Antibody Concentration: 4.0-8.0 ug/ml
Magnification: 400X

| | |
|-------------------|---|
| Application Notes | WB:1:500~1:2000 IHC:1:50~1:200 Notes:Optimal dilutions/concentrations should be determined by the researcher. |
|-------------------|---|

Additional Information

| | |
|----------------------|---|
| Form | Liquid |
| Storage Instructions | Aliquot and store at -20°C. Avoid repeated freeze / thaw cycles |
| Storage Buffer | phosphate buffered saline , pH 7.4, 150mM NaCl, 0.02% sodium azide and 50% glycerol. |
| Note | The product is for research use only,not for use in diagnostic or therapeutic procedures. |

OmnimAbs.com

This product is for research use only and is not approved for use in humans or in clinical diagnosis. Primary Antibodies are guaranteed for 1 year from date of receipt

