



Catalog: OM105090

Scan to get more validated information



Rabbit anti-CBX4 polyclonal antibody - N-terminal region

Catalog: OM105090

☐ 100ug

Product profile

Product name	Rabbit anti-CBX4 polyclonal antibody - N-terminal region
Antibody Type	Primary Antibodies
Immunogen	The immunogen for anti-CBX4 antibody: synthetic peptide directed towards the N terminal of human CBX4

Key Feature

Clonality	Polyclonal
Isotype	IgG
Host Species	Rabbit
Tested Applications	WB ,IHC
Species Reactivity	Bovine Dog Guinea Pig Human Mouse Pig Rabbit
Concentration	1 mg/ml
Purification	Affinity purified

Target Information

Gene Symbol	CBX4
Gene Synonyms	CBX4
Gene Full Name	Chromobox homolog 4
Gene Summary	The polycomb group (PcG) protein HPC2, which functions as a transcriptional suppressor, is a candidate of KyoT2-binding proteins. Pc2 dramatically enhances CtBP sumoylation. Pc2 is a SUMO E3, and Polycomb Group bodies may be sumoylation centers.
Alternative Names	PC2, NBP16
Molecular Weight(MW)	61kDa
Sequence	560 amino acids

Database Links

Entrez Gene	8535
SwissProt ID	O00257-2
Protein Accession	NP_003646

Application



'Application'

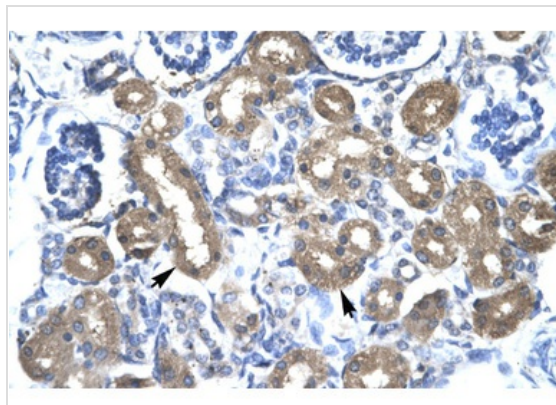
'WB Suggested Anti-CBX4 Antibody Titration: 0.2-1 ug/ml

ELISA Titer: 1:1562500

Positive Control: Jurkat cell lysate

CBX4 is supported by BioGPS gene expression data to be expressed in Jurkat

,



Application

Rabbit Anti-CBX 4 Antibody

Catalog Number: ARP30002

Paraffin Embedded Tissue: Human Kidney

Cellular Data: Epithelial cells of renal tubule

Antibody Concentration: 4.0-8.0 ug/ml

Magnification: 400X

Application Notes

WB:1:500~1:2000

IHC:1:50~1:200

Notes:Optimal dilutions/concentrations should be determined by the researcher.

Additional Information

Form	Liquid
Storage Instructions	Aliquot and store at -20°C. Avoid repeated freeze / thaw cycles
Storage Buffer	phosphate buffered saline , pH 7.4, 150mM NaCl, 0.02% sodium azide and 50% glycerol.
Note	The product is for research use only,not for use in diagnostic or therapeutic procedures.

order@Omnimabs.com

506 N. GARFIELD AVE #210 ALHAMBRA, CA 91801

This product is for research use only and is not approved for use in humans or in clinical diagnosis. Primary Antibodies are guaranteed for 1 year from date of receipt

