



Catalog: OM105160

Scan to get more validated information



Rabbit anti-CCNB1 polyclonal antibody - C-terminal region

Catalog: OM105160

☐ 100ug

Product profile

Product name	Rabbit anti-CCNB1 polyclonal antibody - C-terminal region
Antibody Type	Primary Antibodies
Immunogen	The immunogen for anti-CCNB1 antibody: synthetic peptide directed towards the C terminal of human CCNB1

Key Feature

Clonality	Polyclonal
Isotype	IgG
Host Species	Rabbit
Tested Applications	WB ,IP
Species Reactivity	Bovine Dog Human Mouse Pig Rabbit Rat
Concentration	1 mg/ml
Purification	Affinity purified

Target Information

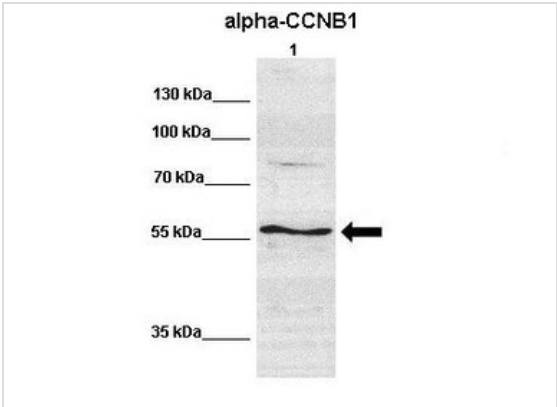
Gene Symbol	CCNB1
Gene Synonyms	CCNB
Gene Full Name	Cyclin B1
Gene Summary	CCNB1 is a regulatory protein involved in mitosis. CCNB1 complexes with p34(cdc2) to form the maturation-promoting factor (MPF).The protein encoded by this gene is a regulatory protein involved in mitosis. The gene product complexes with p34(cdc2) to form the maturation-promoting factor (MPF). Two alternative transcripts have been found, a constitutively expressed transcript and a cell cycle-regulated transcript, that is expressed predominantly during G2/M phase. The different transcripts result from the use of alternate transcription initiation sites.

Alternative Names	CCNB
Molecular Weight(MW)	48kDa
Sequence	433 amino acids

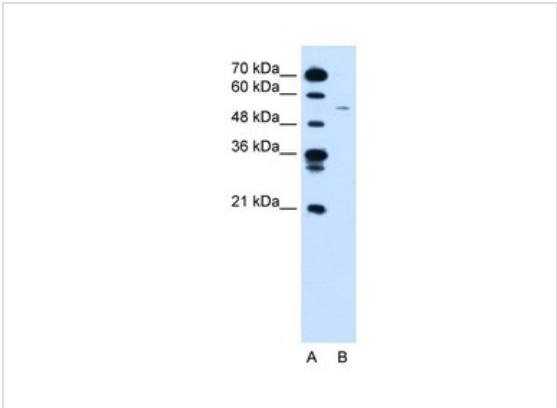
Database Links

Entrez Gene	891
SwissProt ID	P14635
Protein Accession	NP_114172

Application



Western blot
 Positive Control: Lane 1: 60ug human NT2 cell line
 Primary Antibody Dilution : 1:500
 Secondary Antibody : IRDye 800 CW goat anti-rabbit from Li-COR Bioscience
 Secondary Antibody Dilution : 1:20,000
 Submitted by: Dr. Yuzhi Chen, University of Arkansas for Medical Science



Western blot
 0.125ug/ml
 ELISA Titer: 1:312500
 Positive Control: Jurkat cell lysate

Application Notes	WB: 1:500~1:2000 IP: 1:100~1:500 Notes: Optimal dilutions/concentrations should be determined by the researcher.
--------------------------	---

Additional Information

Form	Liquid
Storage Instructions	Aliquot and store at -20°C. Avoid repeated freeze / thaw cycles
Storage Buffer	phosphate buffered saline , pH 7.4, 150mM NaCl, 0.02% sodium azide and 50% glycerol.
Note	The product is for research use only,not for use in diagnostic or therapeutic procedures.

OmnimAbs.com

order@Omnimabs.com
506 N. GARFIELD AVE #210 ALHAMBRA, CA 91801
This product is for research use only and is not approved for use in humans or in clinical diagnosis. Primary Antibodies are guaranteed for 1 year from date of receipt
