



Catalog: OM105158

Scan to get more validated information



# Rabbit anti-CHEK2 polyclonal antibody - N-terminal region

Catalog: OM105158

☐ 100ug

## Product profile

Product name	Rabbit anti-CHEK2 polyclonal antibody - N-terminal region
Antibody Type	Primary Antibodies
Immunogen	The immunogen for anti-CHEK2 antibody: synthetic peptide directed towards the N terminal of human C HEK2

## Key Feature

Clonality	Polyclonal
Isotype	IgG
Host Species	Rabbit
Tested Applications	WB
Species Reactivity	Human
Concentration	1 mg/ml
Purification	Affinity purified

## Target Information

Gene Symbol	CHEK2
Gene Synonyms	RP11-436C9.1; CDS1; CHK2; HuCds1; LFS2; PP1425; RAD53; hCds1
Gene Full Name	Checkpoint kinase 2
Gene Summary	In response to DNA damage and replication blocks, cell cycle progression is halted through the control of critical cell cycle regulators. CHEK2 is a cell cycle checkpoint regulator and putative tumor suppressor. It contains a forkhead-associated protein interaction domain essential for activation in response to DNA damage and is rapidly phosphorylated in response to replication blocks and DNA damage. When activated, CHEK2 is known to inhibit CDC25C phosphatase, preventing entry into mitosis, and has been shown to stabilize the tumor suppressor protein p53, leading to cell cycle arrest in G1. In addition, this protein interacts with and phosphorylates BRCA1, allowing BRCA1 to restore survival after DNA damage. Mutations in it

s gene have been linked with Li-Fraumeni syndrome, a highly penetrant familial cancer phenotype usually associated with inherited mutations in TP53. Also, mutations in its gene are thought to confer a predisposition to sarcomas, breast cancer, and brain tumors. This nuclear protein is a member of the CDS1 subfamily of serine/threonine protein kinases. In response to DNA damage and replication blocks, cell cycle progression is halted through the control of critical cell cycle regulators. The protein encoded by this gene is a cell cycle checkpoint regulator and putative tumor suppressor. It contains a forkhead-associated protein interaction domain essential for activation in response to DNA damage and is rapidly phosphorylated in response to replication blocks and DNA damage. When activated, the encoded protein is known to inhibit CDC25C phosphatase, preventing entry into mitosis, and has been shown to stabilize the tumor suppressor protein p53, leading to cell cycle arrest in G1. In addition, this protein interacts with and phosphorylates BRCA1, allowing BRCA1 to restore survival after DNA damage. Mutations in this gene have been linked with Li-Fraumeni syndrome, a highly penetrant familial cancer phenotype usually associated with inherited mutations in TP53. Also, mutations in this gene are thought to confer a predisposition to sarcomas, breast cancer, and brain tumors. This nuclear protein is a member of the CDS1 subfamily of serine/threonine protein kinases. Three transcript variants encoding different isoforms have been found for this gene.

Alternative Names	RP11-436C9.1, CDS1, CHK2, HuCds1, LFS2, PP1425, RAD53, hCds1
Molecular Weight(MW)	58kDa
Sequence	514 amino acids

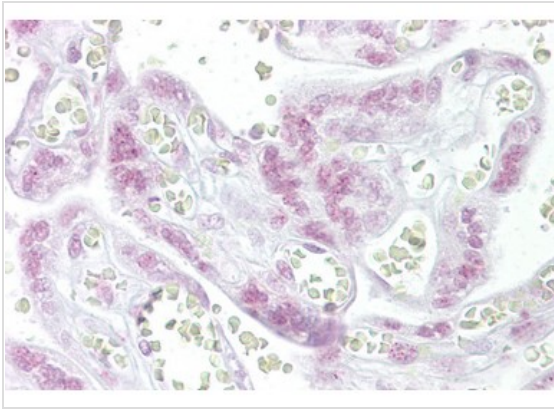
## Database Links

---

Entrez Gene	11200
SwissProt ID	O96017-12
Protein Accession	NP_665861

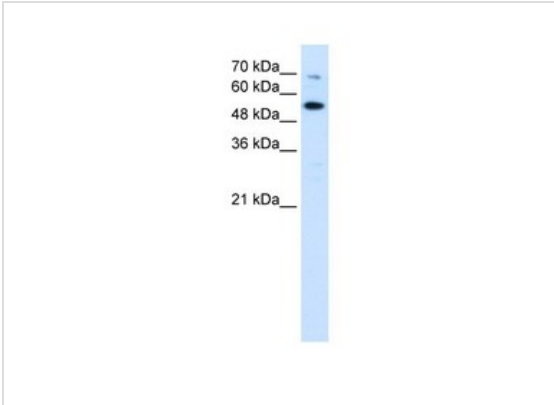
## Application

---



#### Immunohistochemistry

Immunohistochemistry with Placenta tissue at an antibody concentration of 10ug/ml using anti-CHEK2 antibody



#### Western blot

0.2-1 ug/ml

ELISA Titer: 1:312500

Positive Control: Jurkat cell lysate

#### Application Notes

**WB:**1:500~1:2000

**Notes:**Optimal dilutions/concentrations should be determined by the researcher.

## Additional Information

<b>Form</b>	Liquid
<b>Storage Instructions</b>	Aliquot and store at -20°C. Avoid repeated freeze / thaw cycles
<b>Storage Buffer</b>	phosphate buffered saline , pH 7.4, 150mM NaCl, 0.02% sodium azide and 50% glycerol.
<b>Note</b>	The product is for research use only,not for use in diagnostic or therapeutic procedures.

# OmnimAbs.com

order@Omnimabs.com

506 N. GARFIELD AVE #210 ALHAMBRA, CA 91801

This product is for research use only and is not approved for use in humans or in clinical diagnosis. Primary Antibodies are guaranteed for 1 year from date of receipt