



Catalog: OM105220

Scan to get more validated information



Rabbit anti-CXCR4 polyclonal antibody - N-terminal region

Catalog: OM105220

☐ 100ug

Product profile

Product name	Rabbit anti-CXCR4 polyclonal antibody - N-terminal region
Antibody Type	Primary Antibodies
Immunogen	The immunogen for anti-CXCR4 antibody: synthetic peptide directed towards the N terminal of human CXCR4

Key Feature

Clonality	Polyclonal
Isotype	IgG
Host Species	Rabbit
Tested Applications	FC ,IHC ,WB
Species Reactivity	Human Rabbit
Concentration	1 mg/ml
Purification	Affinity purified

Target Information

Gene Symbol	CXCR4
Gene Synonyms	CD184; D2S201E; FB22; HM89; HSY3RR; LAP3; LCR1; LESTR; NPY3R; NPYR; NPYRL; NPY3R; WHIM
Gene Full Name	Chemokine (C-X-C motif) receptor 4
Gene Summary	CXCR4 is a CXC chemokine receptor specific for stromal cell-derived factor-1. The protein has 7 transmembrane regions and is located on the cell surface. It acts with the CD4 protein to support HIV entry into cells and is also highly expressed in breast cancer cells. Mutations in this gene have been associated with WHIM (warts, hypogammaglobulinemia, infections, and myelokathexis) syndrome. Alternate transcriptional splice variants, encoding different isoforms, have been characterized. This gene encodes a CXC chemokine receptor specific for stromal cell-derived factor-1. The protein has 7 transmembrane regions and is located on the cell surface. It acts with the CD4 protein to support HIV entry into cells and is also highly exp

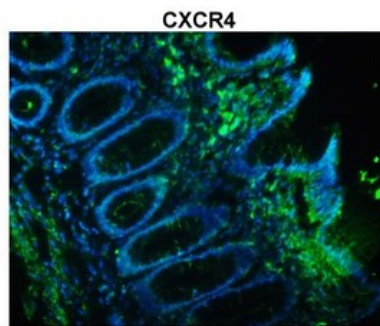
ressed in breast cancer cells. Mutations in this gene have been associated with WHIM (warts, hypogammaglobulinemia, infections, and myelokathexis) syndrome. Alternate transcriptional splice variants, encoding different isoforms, have been characterized.

Alternative Names	CD184, D2S201E, FB22, HM89, HSY3RR, LAP3, LCR1, LESTR, NPY3R, NPYR, NPYRL, NPYY3R, WHIM
Molecular Weight(MW)	40kDa
Sequence	352 amino acids

Database Links

Entrez Gene	7852
SwissProt ID	P61073
Protein Accession	NP_003458

Application



See Immunohistochemistry 1 Data and Customer Feedback tab for more information.

Immunohistochemical

Sample Type: human colon tissues infected ex-vivo with HIV-1

Green: Primary

Blue: DAPI

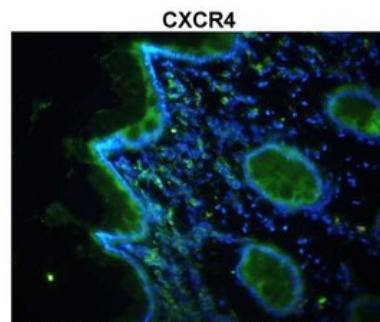
Primary Dilution: 1:100

Secondary Antibody: Donkey anti-Rabbit AF 488

Secondary Dilution: 1:500

Image Submitted By: Chiara Foglieni

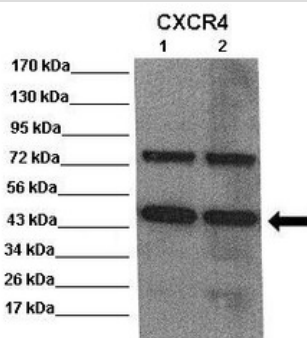
San Raffaele Scientific Institute, Milan, Italy



See Immunohistochemistry 1 Data and Customer Feedback tab for more information.

Immunohistochemistry

Immunohistochemistry with HMEC-1 and A549 cells tissue



Western blot

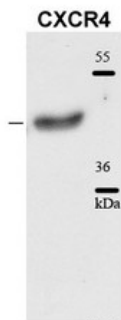
Positive Control: Lane 1: 20ug mouse brain extract Lane 2: 20ug mouse brain extract

Primary Antibody Dilution : 1:500

Secondary Antibody : Anti rabbit-HRP

Secondary Antibody Dilution : 1:5,000

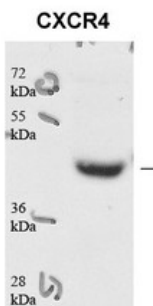
Submitted by: Scott Wilson, University of Alabama at Birmingham



See Immunoblot 3 Data for more information.

Western blot

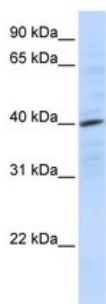
CXCR4 antibody - N-terminal region validated by WB using 721_B cell Lysate at 0.2-1 ug/ml.



See Immunoblot 2 Data for more information.

Western blot

CXCR4 antibody - N-terminal region validated by WB using human microvascular endothelial cells (25ug) at 1:1000.



Western blot

0.2-1 ug/ml

ELISA Titer: 1:312500

Positive Control: 721_B cell lysate

Application Notes

FC:1:200~1:500

IHC:1:50~1:200

WB:1:500~1:2000

Notes:Optimal dilutions/concentrations should be determined by the researcher.

Additional Information

Form

Liquid

Storage Instructions

Aliquot and store at -20°C. Avoid repeated freeze / thaw cycles

Storage Buffer

phosphate buffered saline , pH 7.4, 150mM NaCl, 0.02% sodium azide and 50% glycerol.

Note

The product is for research use only,not for use in diagnostic or therapeutic procedures.

order@Omnimabs.com

506 N. GARFIELD AVE #210 ALHAMBRA, CA 91801

This product is for research use only and is not approved for use in humans or in clinical diagnosis. Primary Antibodies are guaranteed for 1 year from date of receipt

