



Catalog: OM105157

Scan to get more validated information



Rabbit anti-Ccna2 polyclonal antibody - C-terminal region

Catalog: OM105157

☐ 100ug

Product profile

Product name	Rabbit anti-Ccna2 polyclonal antibody - C-terminal region
Antibody Type	Primary Antibodies
Immunogen	The immunogen for anti-Ccna2 antibody: synthetic peptide corresponding to a region of Rat

Key Feature

Clonality	Polyclonal
Isotype	IgG
Host Species	Rabbit
Tested Applications	WB ,IHC
Species Reactivity	Bovine Dog Horse Human Mouse Pig Rabbit Rat Zebra Fish
Concentration	1 mg/ml
Purification	Affinity purified

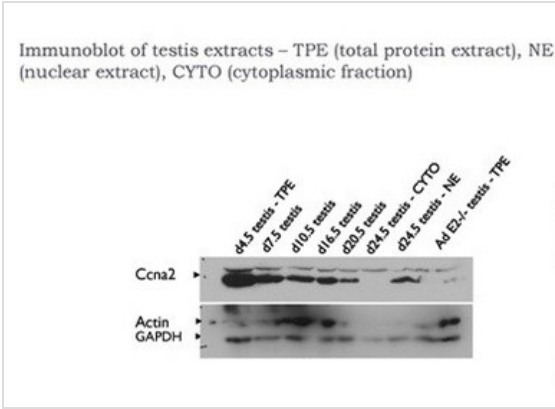
Target Information

Gene Symbol	Ccna2
Gene Synonyms	MGC156527; Ccna2
Gene Full Name	Cyclin A2
Gene Summary	The function of Ccna2 remains unknown.
Alternative Names	MGC156527, Ccna2
Molecular Weight(MW)	47kDa
Sequence	418 amino acids

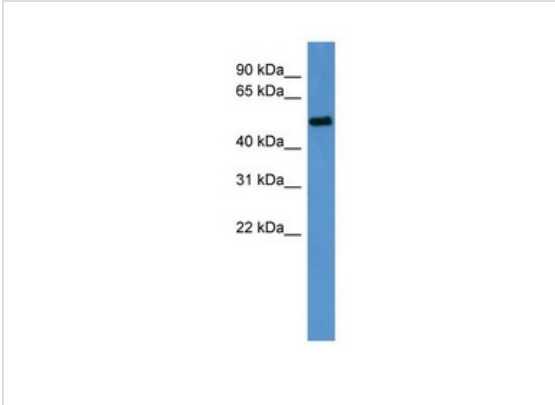
Database Links

Entrez Gene	114494
Protein Accession	NP_446154

Application



Western blot
Ccna2 antibody - C-terminal region validated by WB using testis



Western blot
0.2-1 ug/ml
ELISA Titer: 1:312500
Positive Control: Rat Muscle

Application Notes	WB: 1:500~1:2000
	IHC: 1:50~1:200
	Notes: Optimal dilutions/concentrations should be determined by the researcher.

Additional Information

Form	Liquid
Storage Instructions	Aliquot and store at -20°C. Avoid repeated freeze / thaw cycles
Storage Buffer	phosphate buffered saline , pH 7.4, 150mM NaCl, 0.02% sodium azide and 50% glycerol.
Note	The product is for research use only,not for use in diagnostic or therapeutic procedures.

OmnimAbs.com

