



Catalog: OM105159

Scan to get more validated information



Rabbit anti-Cdk5r1 polyclonal antibody - C-terminal region

Catalog: OM105159

☐ 100ug

Product profile

| | |
|---------------|--|
| Product name | Rabbit anti-Cdk5r1 polyclonal antibody - C-terminal region |
| Antibody Type | Primary Antibodies |

Key Feature

| | |
|---------------------|--------------------------------|
| Clonality | Polyclonal |
| Isotype | IgG |
| Host Species | Rabbit |
| Tested Applications | WB |
| Species Reactivity | Dog Guinea Pig Human Mouse Pig |
| Concentration | 1 mg/ml |
| Purification | Affinity purified |

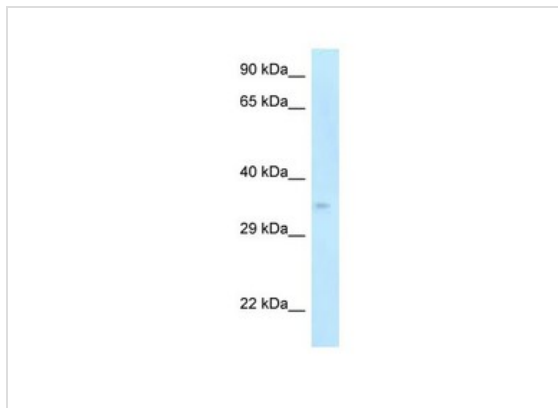
Target Information

| | |
|----------------------|--|
| Gene Symbol | Cdk5r1 |
| Gene Synonyms | Cdk5r; D11Bwg0379e; p25; p35 |
| Gene Full Name | Cyclin-dependent kinase 5, regulatory subunit 1 (p35) |
| Gene Summary | p35 is a neuron specific activator of CDK5. The complex p35/CDK5 is required for neurite outgrowth and cortical lamination. Cdk5r1 is an activator of TPKII. |
| Alternative Names | Cdk5r, D11Bwg0379e, p25, p35 |
| Molecular Weight(MW) | 34kDa |
| Sequence | 307 amino acids |

Database Links

| | |
|--------------------------|-----------|
| Entrez Gene | 12569 |
| SwissProt ID | P61809 |
| Protein Accession | NP_034001 |

Application



Western blot
 Titration: 1.0 ug/ml
 Positive Control: Mouse Pancreas

Application Notes **WB:**1:500~1:2000
Notes:Optimal dilutions/concentrations should be determined by the researcher.

Additional Information

Form Liquid

Storage Instructions Aliquot and store at -20°C. Avoid repeated freeze / thaw cycles

Storage Buffer phosphate buffered saline , pH 7.4, 150mM NaCl, 0.02% sodium azide and 50% glycerol.

Note The product is for research use only,not for use in diagnostic or therapeutic procedures.

OmnimAbs.com

order@Omnimabs.com

506 N. GARFIELD AVE #210 ALHAMBRA, CA 91801

This product is for research use only and is not approved for use in humans or in clinical diagnosis. Primary Antibodies are guaranteed for 1 year from date of receipt